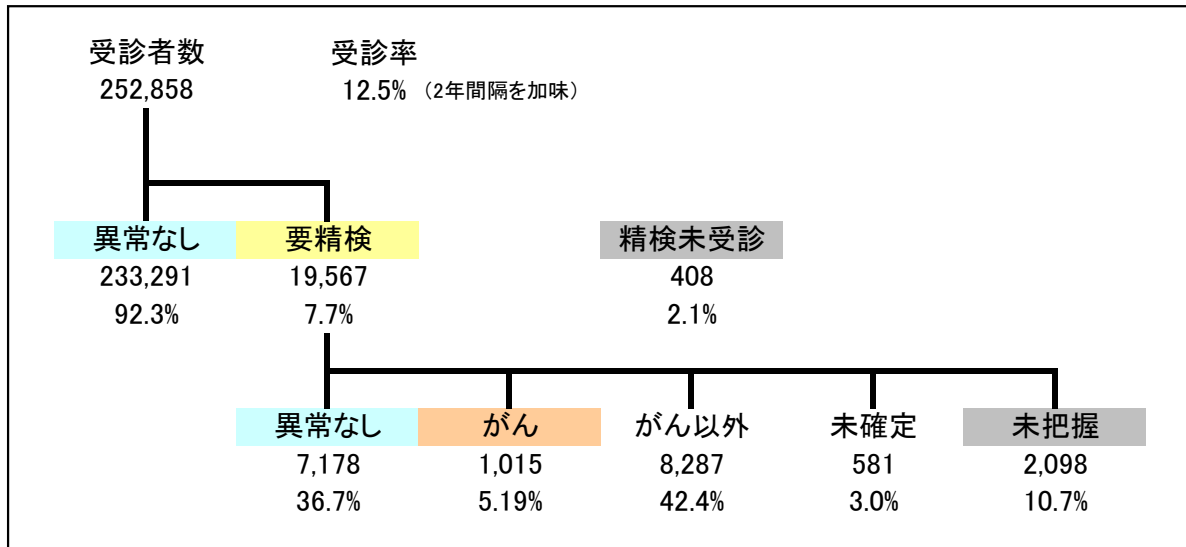
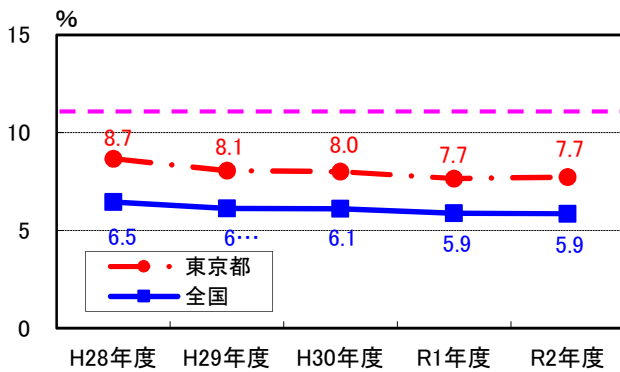


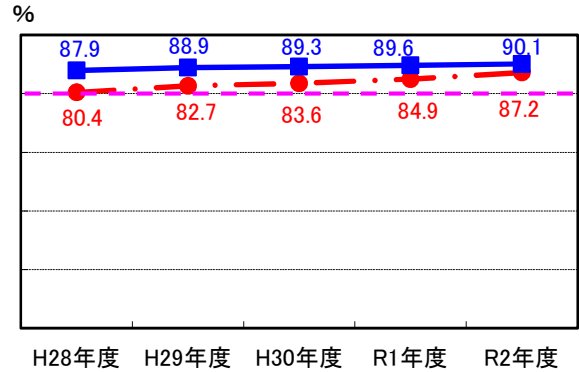
令和2年度 乳がん検診 精度管理チャート



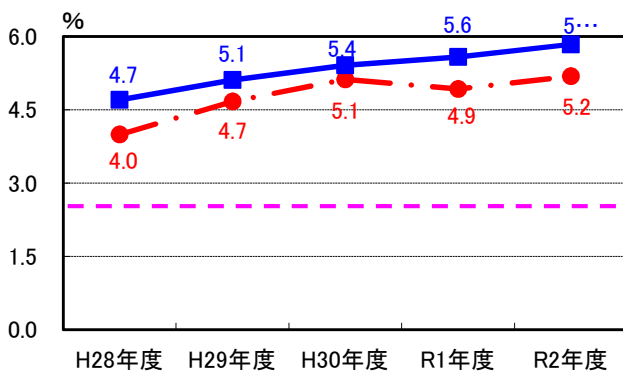
要精検率(許容値11.0%以下)



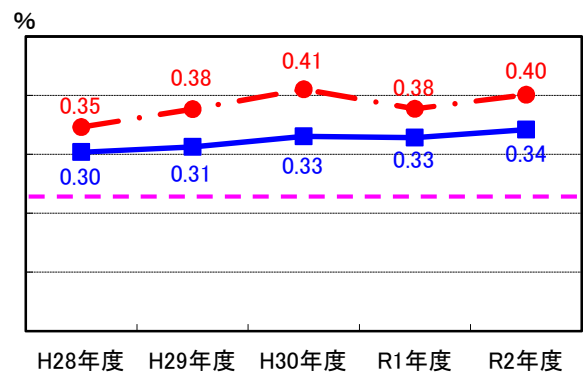
精検受診率(許容値80%以上)



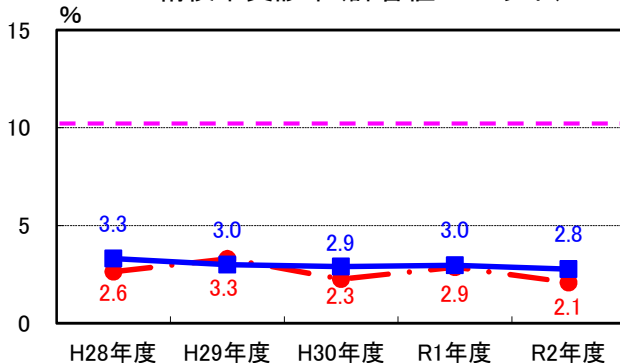
陽性反応適中度(許容値2.5%以上)



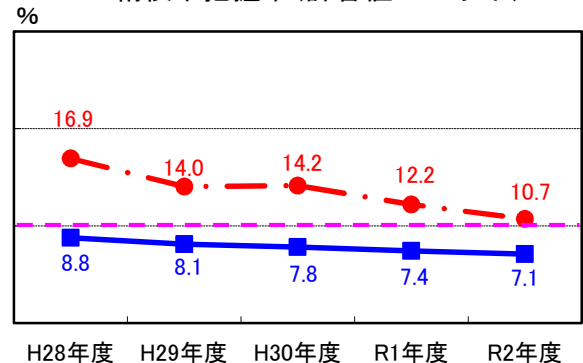
がん発見率(許容値0.23%以上)



精検未受診率(許容値10%以下)



精検未把握率(許容値10%以下)



(地域保健・健康増進事業報告より算出)