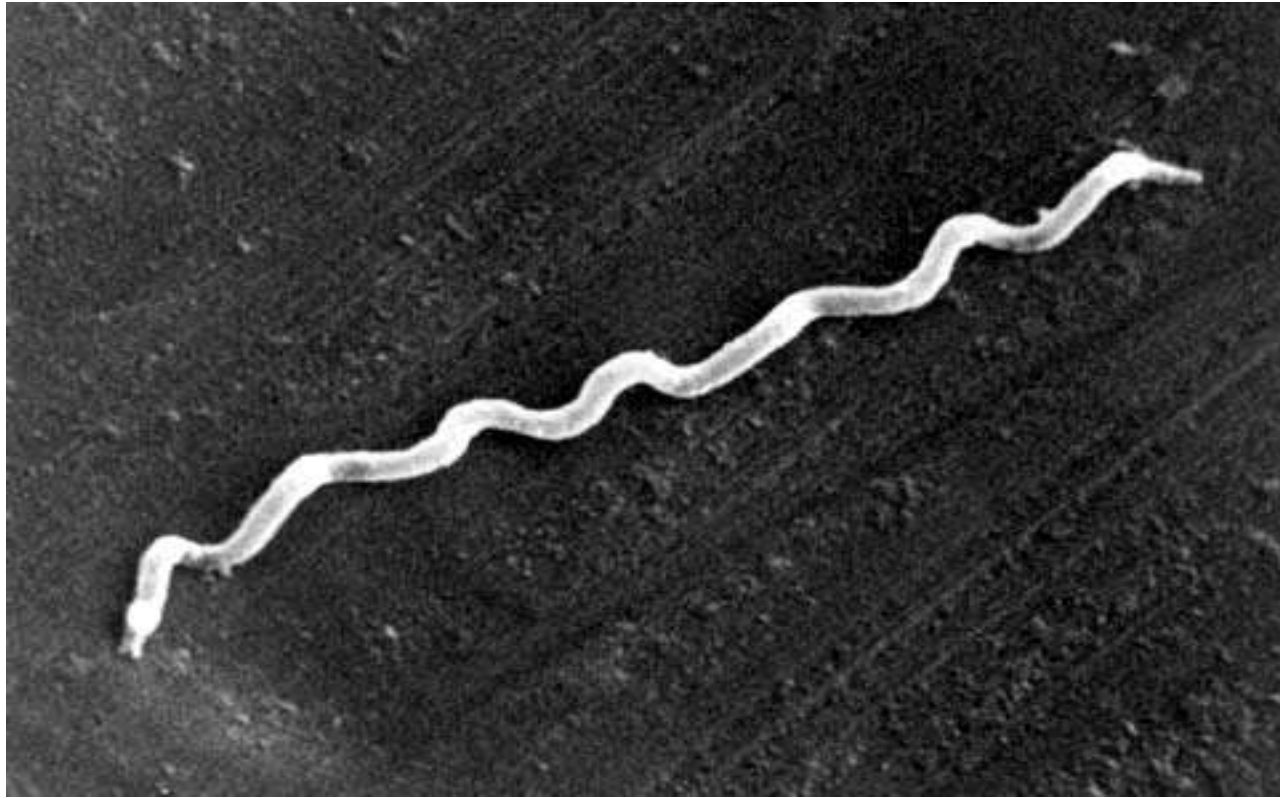


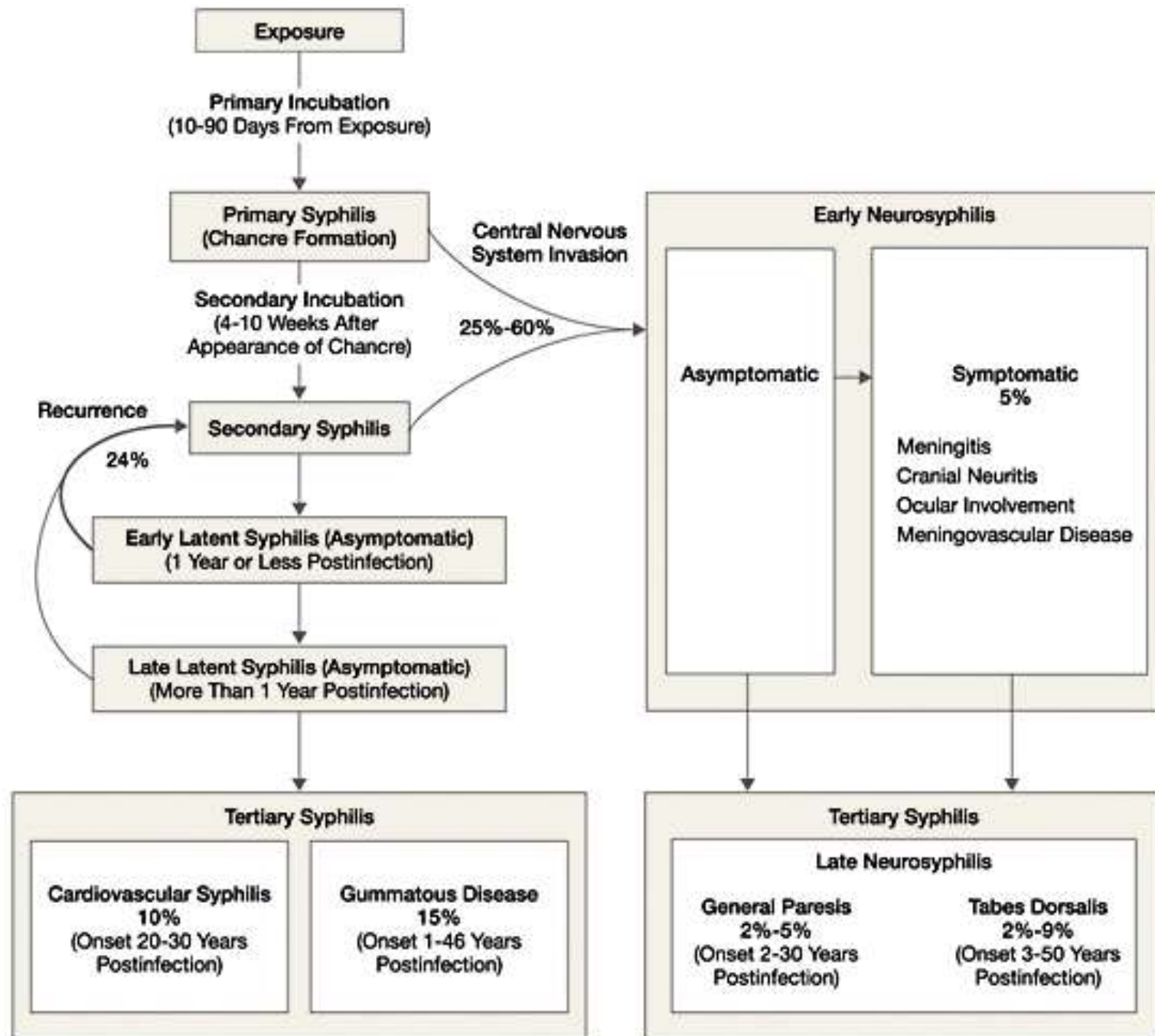
# Current Situation and Control Program of Syphilis in Tokyo

**Akifumi Imamura, MD.**

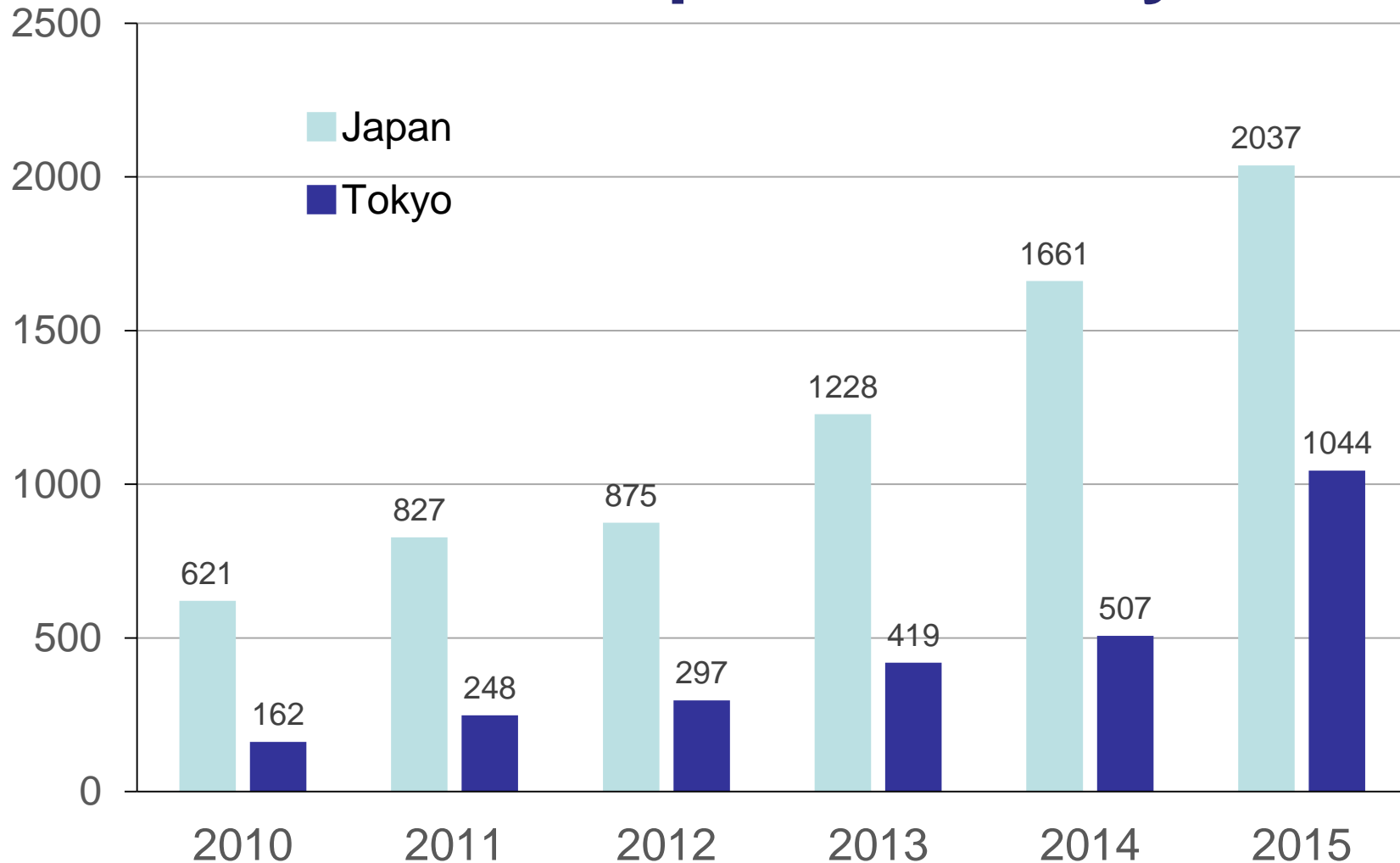
*Tokyo Metropolitan  
Cancer and Infectious Diseases Center  
Komagome Hospital*



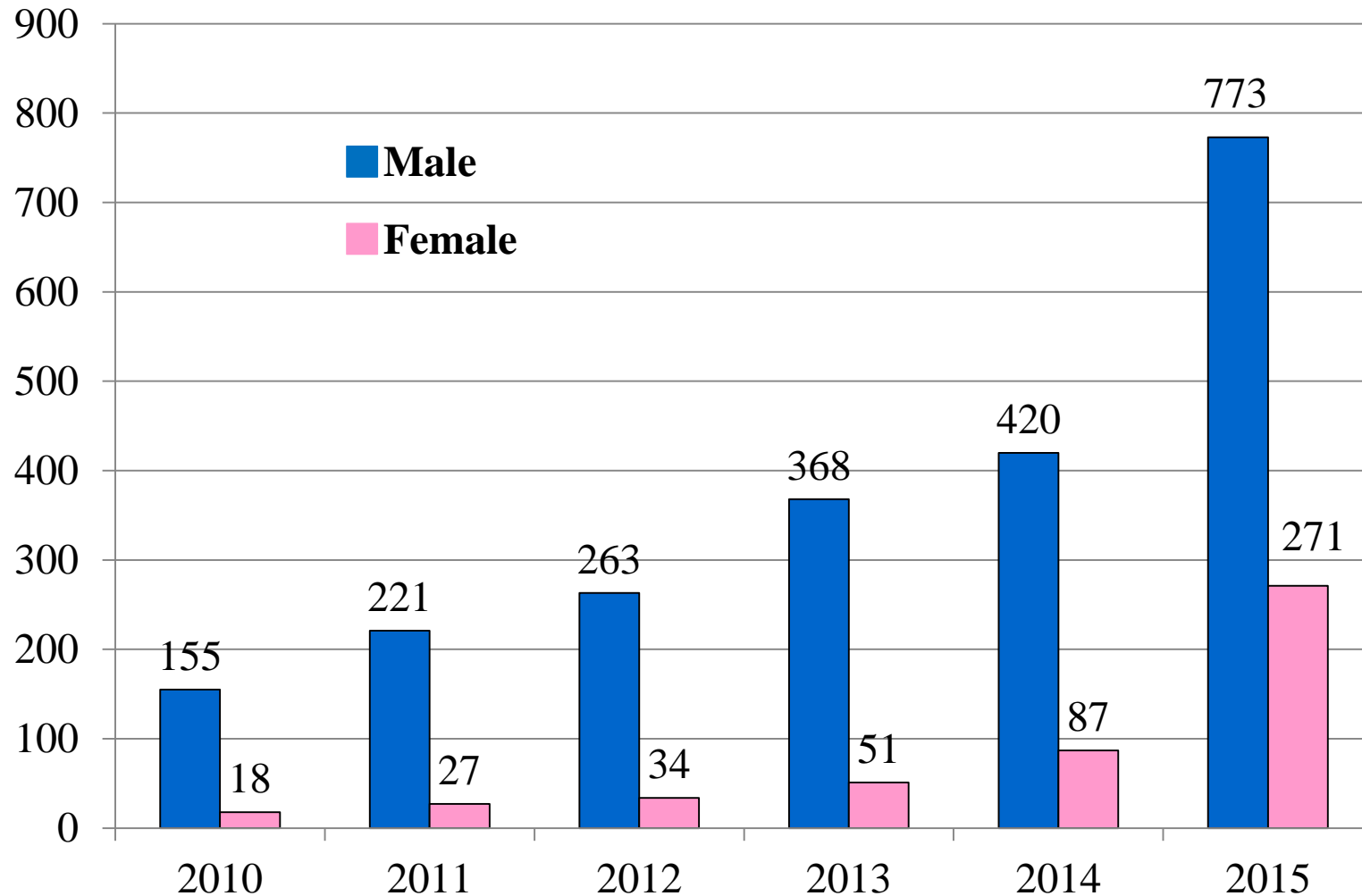
***Treponema pallidum***



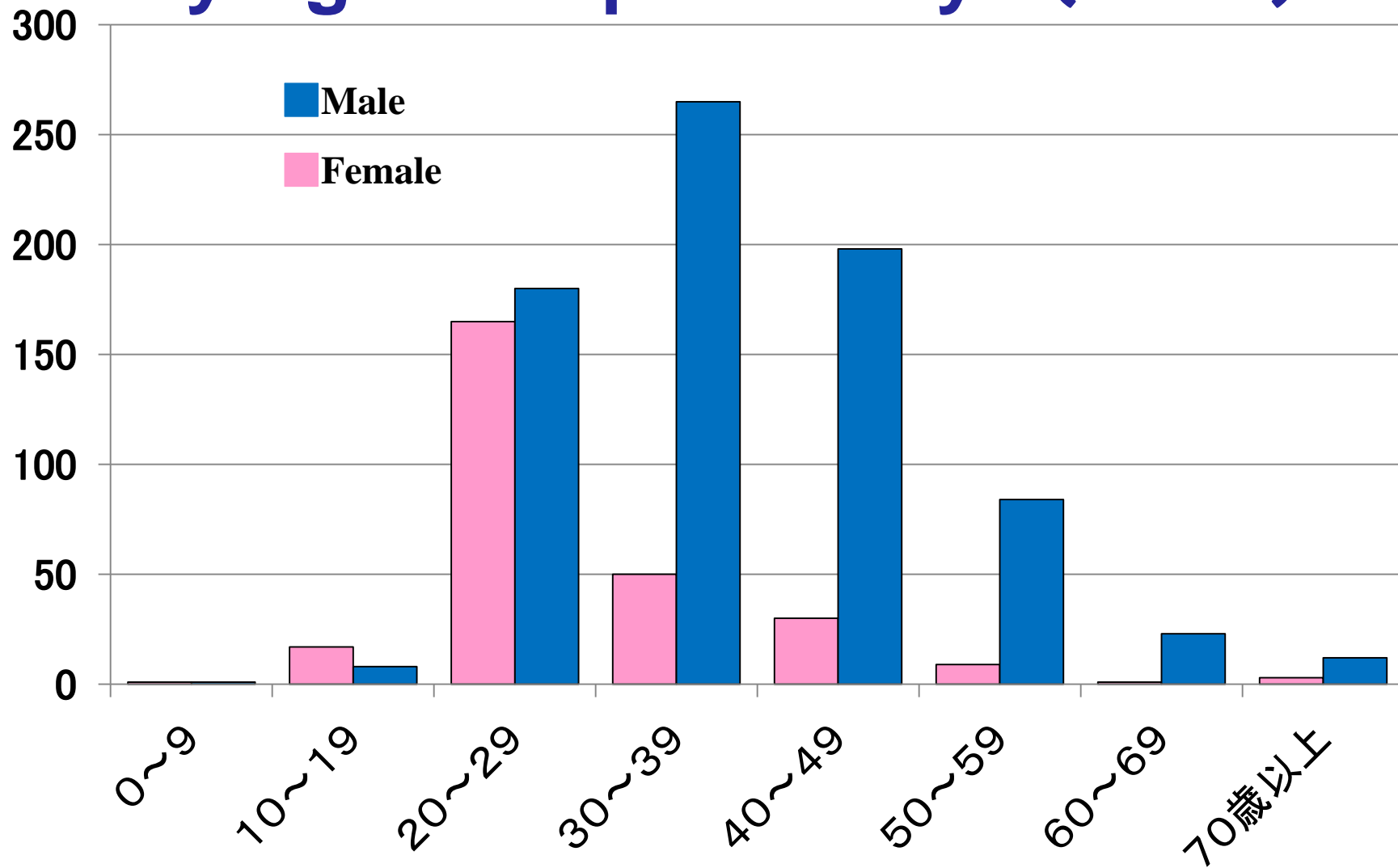
# Annual Trends in Number of Syphilis Cases in Japan and Tokyo



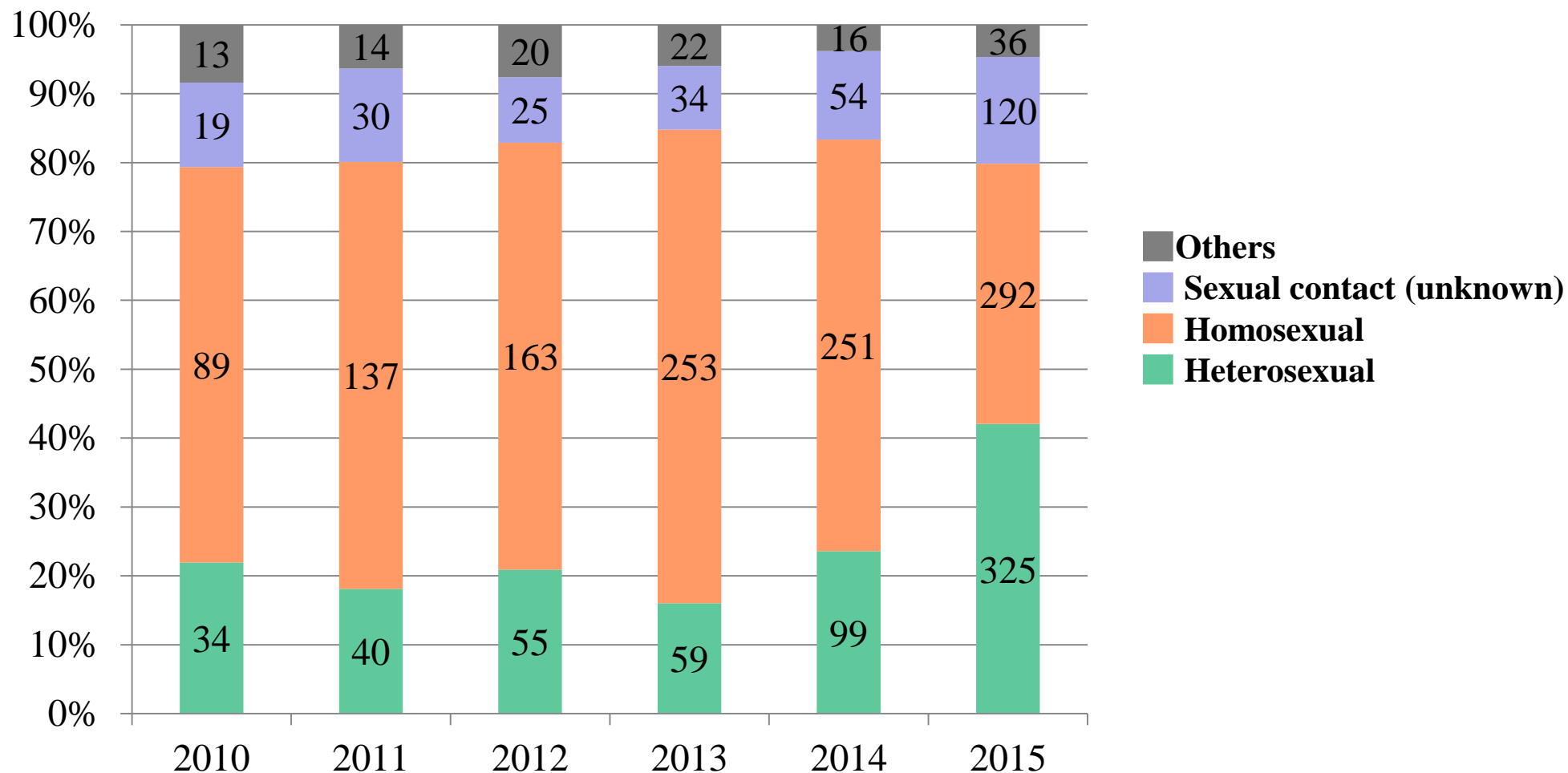
# Annual Trends in Number of Syphilis Cases by Gender in Tokyo



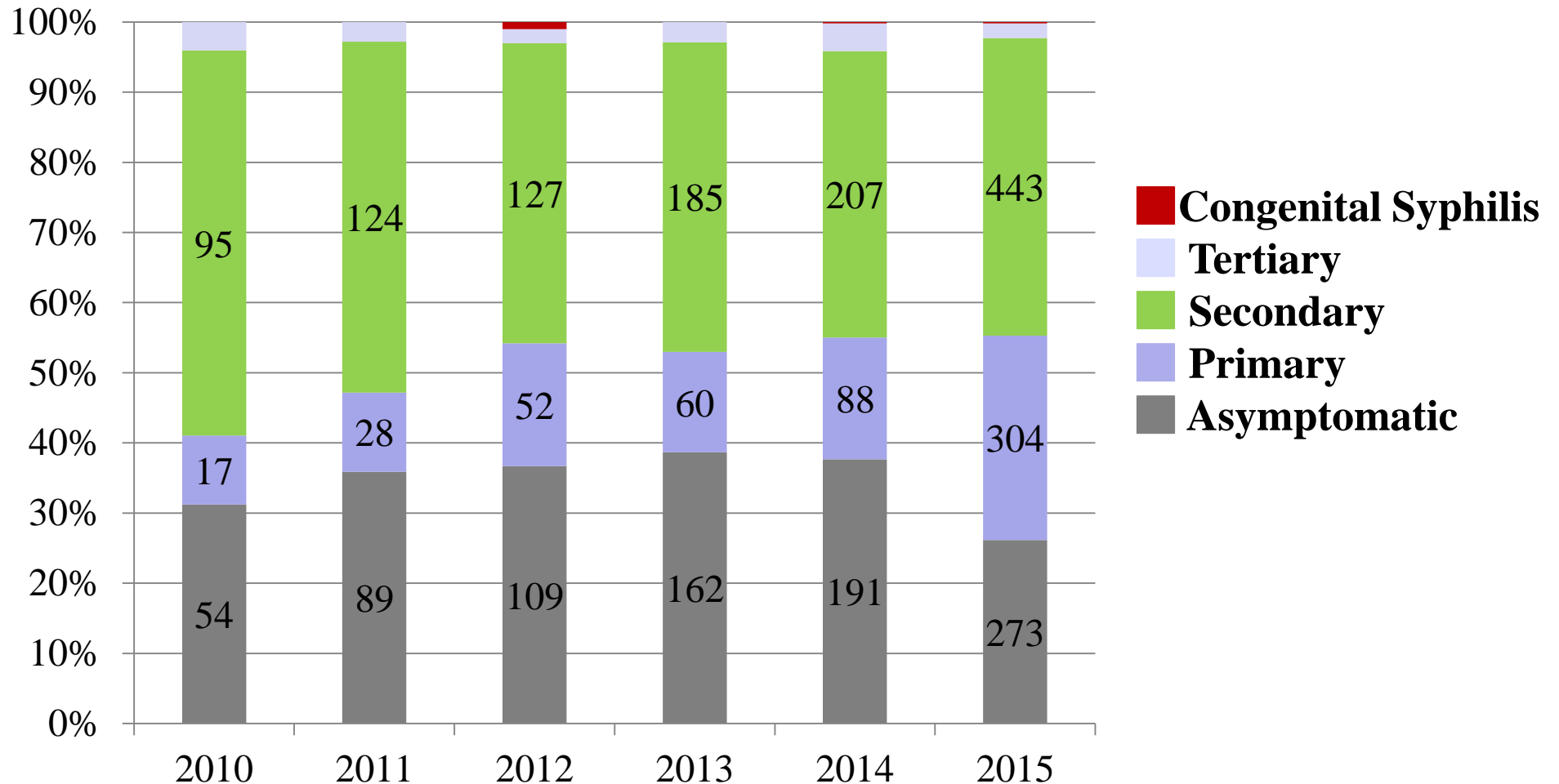
# Distribution of Reported Syphilis Cases by Age Groups in Tokyo (2015)



# Annual Trends in Reported Male Syphilis Cases by Transmission Route in Tokyo



# Annual Trends in Distribution of Reported Syphilis Infection Stages in Tokyo





# Annual Trends in TPLA Positivity Rate among Newly Registered HIV Patients at Komagome Hsp (2006 – 2014)

When HIV was Diagnosed (Year)	Number of Newly Registered HIV Patients	Number of TPLA(+) Patients	TPLA positivity (%)
2006	97	42	43.3
2007	98	49	50.0
2008	103	46	44.7
2009	103	52	50.5
2010	97	35	36.1
2011	94	31	33.0
2012	95	33	34.7
2013	91	42	46.2
2014	84	31	36.9

# Tips 1: Promoting Awareness of Syphilis

★ Syphilis can be transmitted through oral sex



By Japanese Ministry of Health,  
Labour and Welfare

## **Tips 2: Promoting Awareness of Syphilis**

- ★ Many of skin or mucosal symptoms caused by syphilis are painless**
- ★ Localized symptoms in primary stage and skin rashes in secondary stage disappear even without treatment**

## **Tips 3: Promoting Awareness of Syphilis**

- ★ Syphilis can be transmitted even from infected person without any symptoms**
- ★ Syphilis can be infected many times even after treatment**
- ★ Syphilis can be infected if your partner is not treated even after treating yourself**

厚生労働省

STI (性感染症)・HIVは  
早期発見・治療が大切です。

保健所や医療機関などで検査を受けることができます。各機関にお問い合わせください。  
まずは検査・相談できる機関を検索してみよう。▶▶▶▶

HIV検査相談マップ  
全国HIV/エイズ・性感染症  
検査・相談窓口情報サイト  
<http://www.hivkensa.com/>

検査しないとおしおきよ!!

コンドームの適切な使用により感染のリスクを減らすことができます。

STI-HIVはセックス、オラルセックス、アナルセックスなどをとて感染します。一度かかっても再び感染することがあるので、パートナーと一緒に検査・治療を受けましょう。

© 2014 厚生労働省

# Promoting STI screening with popular Japanese Manga, “Sailormoon”

By Japanese Ministry of Health,  
Labour and Welfare

# Primary syphilis

# Hard chancre (anus)



# **Secondary syphilis**



# Typical skin rash



# Typical skin rash





**My hands are getting rough and dry.  
Too much hand washing?**

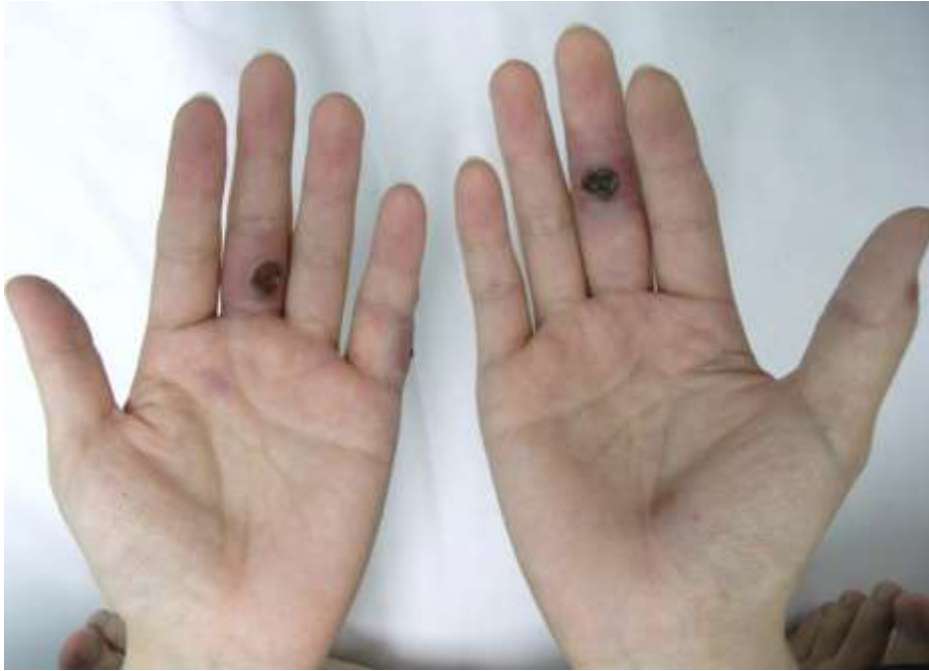


**Too much foot sole washing ???**

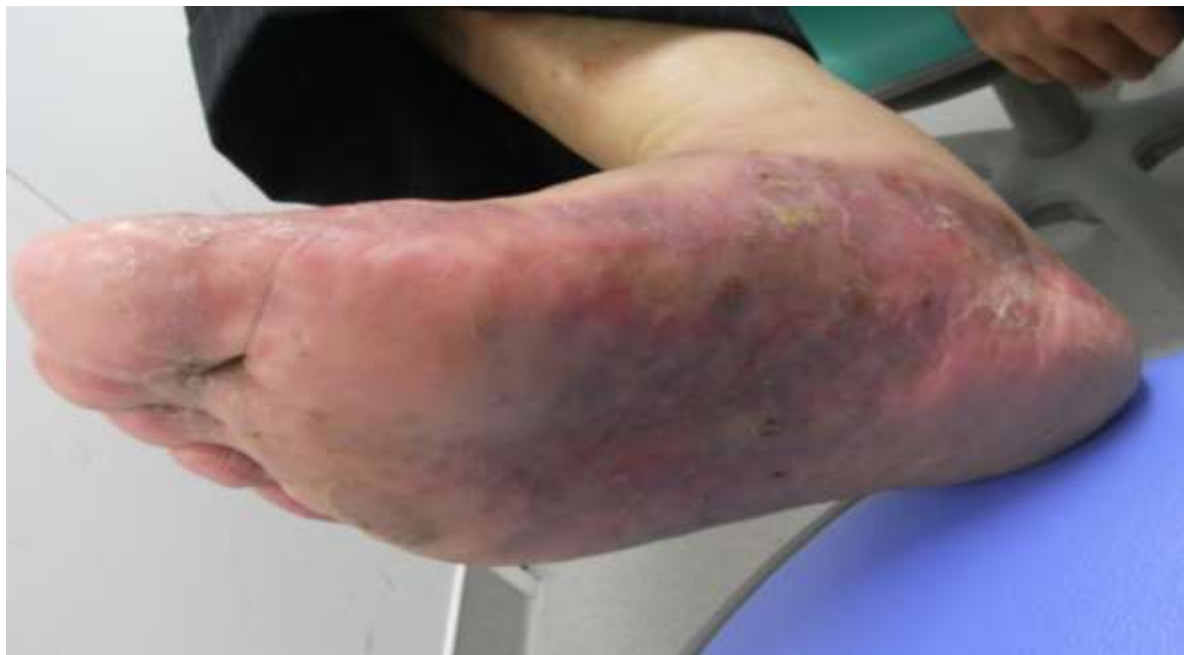
**No, it's Syphilis !!**



# Various types of rashes



# Various types of rashes





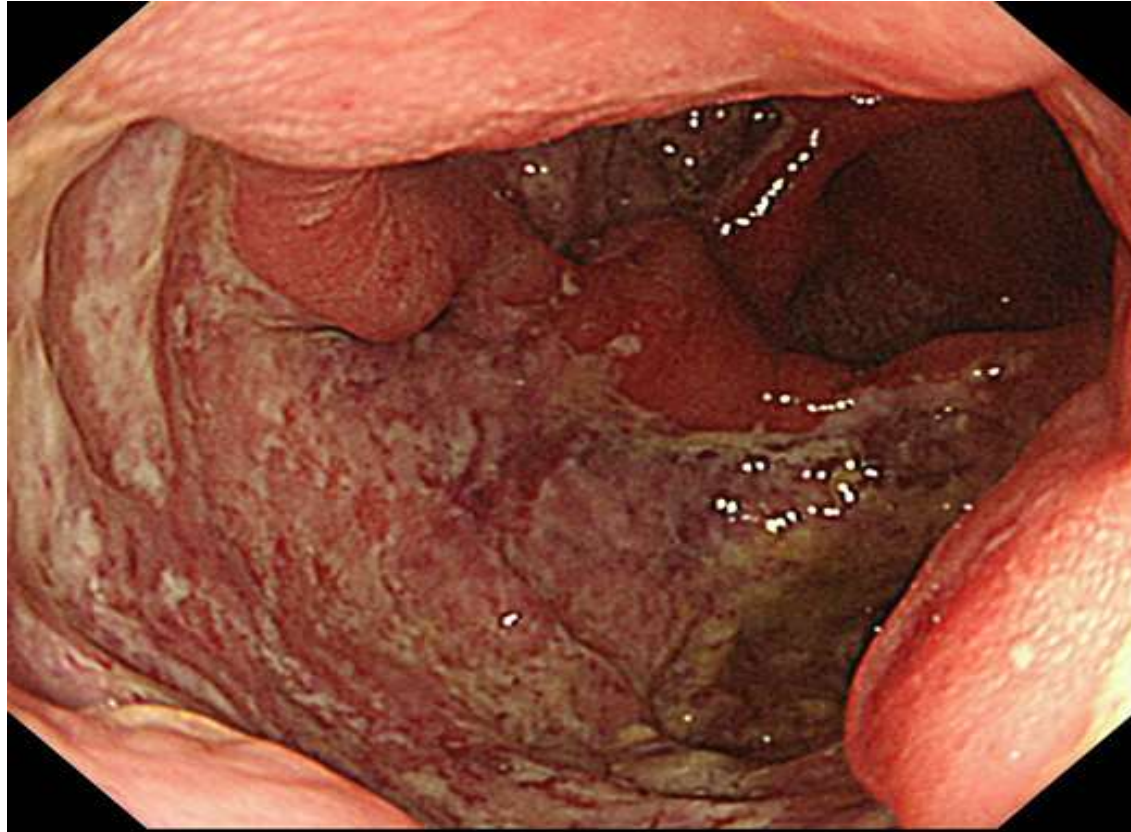
**Various types  
of rashes**



# Pharyngeal Syphilis



# Syphilis proctitis/colitis



# Alopecia



**Before treatment**



**After treatment**

# Ocular Syphilis



# Throat Ulcer



# Skin ulcers (Malignant syphilis)



# Skin ulcers (Malignant syphilis)



# Penile ulcer





**Thank you for your attention**

