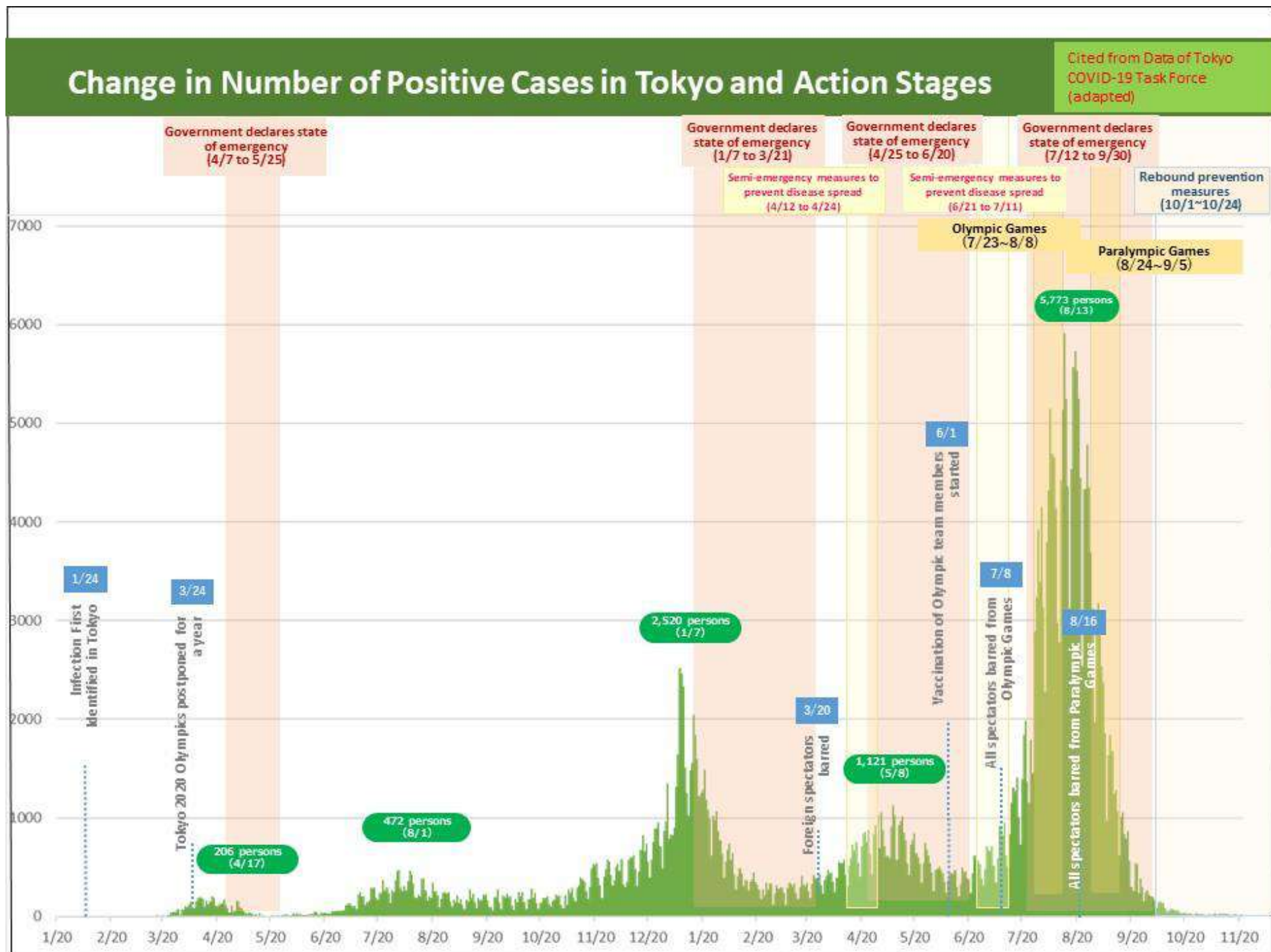


# Infection Control against COVID-19 in Tokyo 2020 Olympic/Paralympic Games



東京都福祉保健局  
Bureau of Social Welfare and Public Health  
Tokyo Metropolitan Government



## Basic Measures Taken for Infection Control (as of April 2019)

Measures	Outlines	Remarks
Surveillance	Recognizing the incidence status of infection Systematically collecting information on incidence of the infection from medical institutions all time to monitor presence and status of occurrence of the infection and analyze and utilize the information	(Ex.) • Infectious Disease Weekly Report (patient/pathogen surveillance) • Surveillance of emergency transfer, etc.
Pathogen tests	Testing of pathogens required to take measures Identification of diseases or pathogens difficult to be performed in medical institutions which is required to take measures by governments	(Ex.) • Tests to identify disease in the epidemiological research, etc.
Epidemiological Research	Identification of cause and research to prevent secondary infection Health Centers perform researches to obtain information from patients, which is necessary to take measures (presumed cause and presence of contact persons).	• Including "Health Instructions" for recovery of patients and persons who contacted them and for prevention of secondary infection
Provision of medical care	Provision of medical care for infection Providing appropriate medical care for patients with infection to prevent aggravation, help early recovery and prevent spread of infection	(Ex.) • Provision of medical care in Designated Medical Institutions for Infectious Diseases • Provision of information required in diagnosis for general medical institutions, etc.
Others	Efforts to prevent infection and spread of infection Efforts to prevent infection and spread of infection in addition to the above	(Ex.) • Raise of public awareness, information transmission and consultation for Tokyo citizens, etc.

## Context of Discussion about COVID-19

Date	Item	Description	
September 4, 2020	Coordination Meeting for Control of COVID-19 in Tokyo Olympic/Paralympic Games	The first meeting was held. Then a total of 7 meetings were held in the following schedule: 9/4, 9/23, 10/9, 10/27, 11/12, 12/2 and 4/28/2021	The 1st Coordination Meeting for Control of COVID-19 
December 2	Coordination Meeting for Control of COVID-19	Interim report	
February 3, 2021	Publication of Play Book ver.1		
March 20	Five-Party Meeting	Acceptance of spectators from overseas countries into Japan was given up	
April 28	Publication of Play Book ver.2		
April 30	Specialist Round Table for Control of COVID-19 in Tokyo 2020 Olympic/Paralympic Games	The first meeting was held. Then a total of 5 meetings were held in the following schedule: 4/30, 5/28, 6/11, 6/18, 8/20	The 1st Specialist Round Table 
June 15	Publication of Play Book ver.3		Publication of Play Book ver. 2 
June 21	Five-Party Meeting Stakeholders meeting (IOC, IPC, Organising Committee, GoJ, TMG)	It was agreed that the number of spectators would be not more than 50% of the capacity or 10,000 at the maximum.	
July 8	Five-Party Meeting	Barring of spectators from the Olympic Games was decided	
August 16	Four-Party Meeting	Barring of spectators from the Paralympic Games was decided (except cooperative school spectators)	

Data in the 47<sup>th</sup> Board Meeting of Tokyo 2020 Resolution Matters  
<https://www.tokyo2020.jp/ja/news/news-20210128-01-jp/index.html>

# COVID-19 Measures against at Tokyo 2020

Cited from Data of Tokyo COVID-19 Task Force

- To host the Games safely under COVID-19 pandemic, thorough border control, regular tests after entry, and strict activity control measures, etc. were in place.
- The Games were held safely, for example, the positive rate was kept low among athletes/officials.

## A safe environment was prepared for athletes/officials

<b>Size of foreign contingencies entering Japan was reduced</b>	<ul style="list-style-type: none"> <li>● Along with simplified operations of the Games, the number of officials entering Japan was reduced to one-quarter for the Olympic Games and one-third for the Paralympic Games of the plan before the postponement.</li> </ul>
<b>Border control/testing</b>	<ul style="list-style-type: none"> <li>● Athletes/officials were tested twice before entry</li> <li>● Athletes were tested every day and officials were tested regularly depending on their roles.</li> </ul>
<b>Activity control/health control</b>	<ul style="list-style-type: none"> <li>● Strict limitations on destinations, activity control and health control</li> </ul>
<b>Basic disease infection control</b>	<ul style="list-style-type: none"> <li>● Preventing spread of infection in Athlete's Village and competition venues included basic COVID-19 measures, such as masks, physical distancing, and avoiding the 3 Cs.</li> </ul>

## Minimizing contact with residents in Japan to ensure safety of Japanese citizens

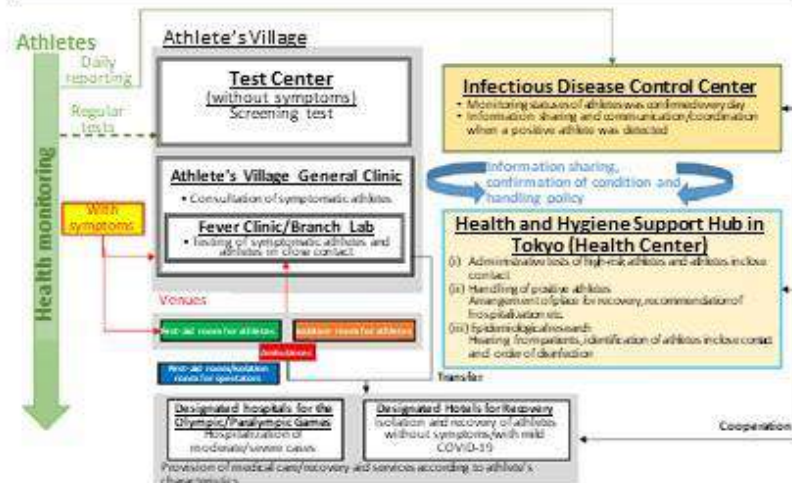
<b>Transportation</b>	<ul style="list-style-type: none"> <li>● Basically, no public transportation was used. Movement was via dedicated vehicles.</li> </ul>
<b>Accommodations</b>	<ul style="list-style-type: none"> <li>● When lodging was reserved by individuals, it had to meet the Accommodation Guidelines. Otherwise, lodgings were switched to those booked by the Organizing Committee.</li> </ul>



## Infectious Disease Control Center, Health and Hygiene Support Hub in Tokyo, and Fever Clinic

### Plan

Medical services were provided according to athlete's characteristics in close cooperation among Infectious Disease Control Center, Health and Hygiene Hub and Athlete's Village General Clinic etc. in Athlete's Village etc. where the athletes were concentrated.



### (1) Infectious Disease Control Center (IDCC)

- Operation period: from July 1 to September 20
- System: During the Olympic/Paralympic Games: Operation for 24 hours a day in shifts  
Other periods: Operation from 7:00 a.m. to 11:00 p.m.  
Daytime: about 18 staff members,  
Nighttime: about 12 staff members

### (2) Health and Hygiene Support Hub in Tokyo

- Operation period: from July 1 to September 20
- System: One doctor, 3 public health nurses, 8 clerks and 6 to 15 tracers (depending on the period)

### (3) Fever Clinic

- Operation period: from July 7 to September 8 (including the on-call period)
- System: Operation for 24 hours a day in shifts  
Daytime: 2 doctors and 6 nurses  
Night time: 1 doctor and 2 nurses

### Summary

- Organic cooperation of 3 functions (Infectious Disease Control Center, Health and Hygiene Support Hub in Tokyo, and Fever Clinic) achieved smooth testing, early identification of positive persons, and rapid handling.
- In Fever Clinic, Infections Area and Non-infectious Area were separated via thorough zoning for prevention of nosocomial infection and on-site specimen analysis enabled obtainment of results within 2 to 3 hours after collecting specimens.
- In IDCC, personnel from different related organizations (IDCC, Tokyo Municipal Government and MHLW) worked together to smoothen communications, contributing to prompt information sharing and decision making.

## Play Book

- **Play Book was prepared and published for each athlete/official, which compiled the rules for COVID-19 control to be complied with by participants in the Tokyo 2020 Olympic/Paralympic Games based on specialists' opinion, in cooperation with IOC and IPC.**
  - **Version 1: Published in February 2021 (2/3 to 3/16)**  
It described basic principles and frameworks to be conducted for each step based on the Interim Report of Coordination Meeting for Control of COVID-19 in December 2020, in reference to advice from WHO and third-party specialists and organizations and lessons from the global sports events.
  - **Version 2: Published in April (4/28 to 5/10)**  
The descriptions in Version 1 were refined to be more detailed. Particularly, frequency of tests in athletes/officials (basically daily tests) and the role of CLO were described in detail.
  - **Version 3: Published in June (6/15 to 6/22)**  
The rules for action control were strengthened. Frequency and process of the tests were indicated in specific. Sanctions against breaches of the rules were specified clearly. Issues appeared after Play Book ver. 2, such as requirement of COVID Certificate before departure were addressed.
- **Communications with stakeholders**  
**In addition to individual communications with the organizations, briefings were held for the stakeholders each time Play Book was updated to share and explain necessary information for understanding of the safe Games and compliance of the rules.**



Data in the 47<sup>th</sup> Board Meeting of Tokyo 2020 Resolution Matters  
<https://www.tokyo2020.jp/news/news-20210528-01-jp/index.html>

## Frequency of Tests

Place	Level	Description	Subjects	Frequency
Tokyo	1A	<ul style="list-style-type: none"> <li>• Athletes staying in Athlete's Village</li> <li>• Other residents in Athlete's Village (as they had important roles in the operations of the Games and contacted closely to the athletes)</li> </ul>	<ul style="list-style-type: none"> <li>• Residents in Athlete's Village</li> <li>• Athletes</li> <li>• Team officials</li> <li>• Others with NOC/NPC Accreditation</li> </ul>	Daily
Tokyo	1B	<ul style="list-style-type: none"> <li>• Athletes and team officials not staying in Athlete's village</li> </ul>	<ul style="list-style-type: none"> <li>• Athletes not staying in Athlete's Village but living in Tokyo</li> <li>• Team officials not staying in Athlete's Village but living in Tokyo</li> <li>• Others with NOC/NPC Accreditation</li> </ul>	Daily
Local	1C	<ul style="list-style-type: none"> <li>• Athletes and team officials not staying in Tokyo</li> </ul>	<ul style="list-style-type: none"> <li>• Those who stayed in local venues</li> <li>• Athletes</li> <li>• Team officials</li> <li>• Others with NOC/NPC Accreditation</li> </ul>	Daily
ALL	1D	<ul style="list-style-type: none"> <li>• Those who contacted or closely interacted with athletes on the regular basis</li> <li>• Core participants required to operate the Games</li> </ul>	<ul style="list-style-type: none"> <li>• IF representatives, international technical officials, referees, jury members, domestic technical officials, equipment engineers, IF Directors, General Directors and Executive Secretary of IF, IF full-time senior staff, IF staff, IF medical officers, transferable guests, media representatives</li> <li>• FOP broadcasters and photographers</li> </ul>	Daily
ALL	1E	<ul style="list-style-type: none"> <li>• Those who contacted or closely interacted with athletes on the regular basis</li> <li>• Core participants required to operate the Games</li> </ul>	<ul style="list-style-type: none"> <li>• Some sport volunteers</li> <li>• Some FOP and OLV support service staff (ex. time keepers, result managers, and medical staff in the isolation/quarantine facilities)</li> </ul>	Daily
ALL	2A	<ul style="list-style-type: none"> <li>• Participants who possibly contacted level 1 participants (particularly participants who possibly contacted athletes)</li> </ul>	<ul style="list-style-type: none"> <li>• Other broadcasters/press</li> <li>• Olympic/Paralympic family</li> <li>• Marketing partners</li> </ul>	Every 4 days
ALL	2B	<ul style="list-style-type: none"> <li>• Participants who possibly contacted level 1 participants (particularly participants who possibly contacted athletes)</li> </ul>	<ul style="list-style-type: none"> <li>• Other sport volunteers</li> <li>• Other support service staff</li> </ul>	Every 4 days
ALL	3	<ul style="list-style-type: none"> <li>• Participants who had limited or no contact with level 1 participants</li> <li>• Participants who possibly contacted a stakeholder from foreign countries</li> </ul>		Every 7 days
ALL	4	<ul style="list-style-type: none"> <li>• Other participants in the Games</li> </ul>		No test

<https://www.paralympic.org/tokyo-2020/playbooks>

## Handling of Athletes etc. in Close Contact

Specific conditions for participation of athletes etc. in close contact in exercise and the games were discussed between the Japanese Government, Tokyo Metropolitan Government, the Organising Committee and IOC/IPC and decided and operated as follows:

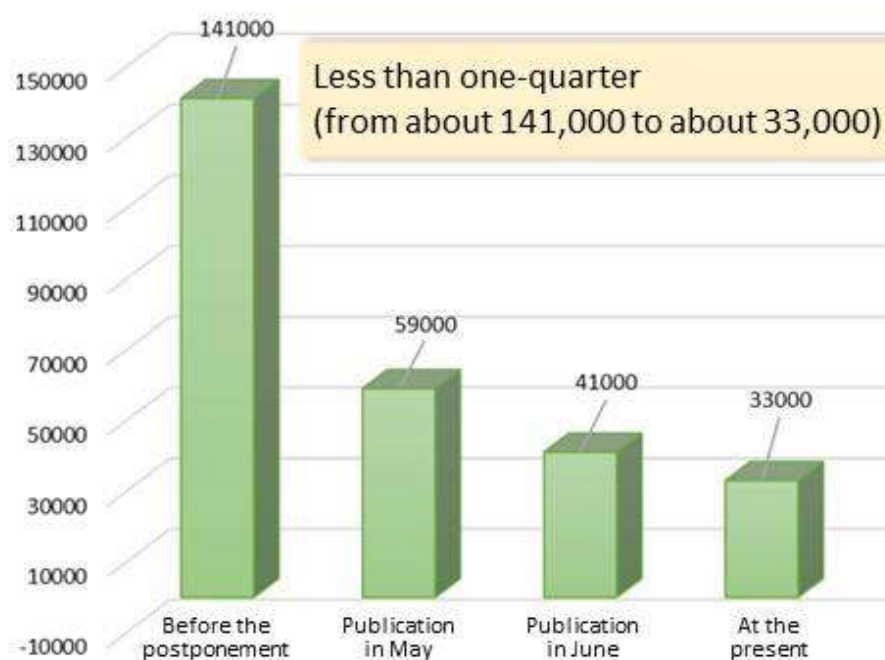
### Measures required for participation in exercise and games

- ✓ Tested negative by nasopharyngeal PCR test (basically) every day
- ✓ Staying in an individual room
- ✓ Eating alone in the individual room
- ✓ Moving by an individual car (using a dedicated car, in cooperation with airway companies)
- ✓ Athletes etc. in close contact must not go out except for exercise and the game  
 Keeping a physical distance from others in the exercise site and the venues  
 →Supervised by officers of the Organising Committee

Data in the 47<sup>th</sup> Board Meeting of Tokyo 2020 Resolution Matters  
<https://www.tokyo2020.jp/ja/news/news-20210528-01-jp/index.html>

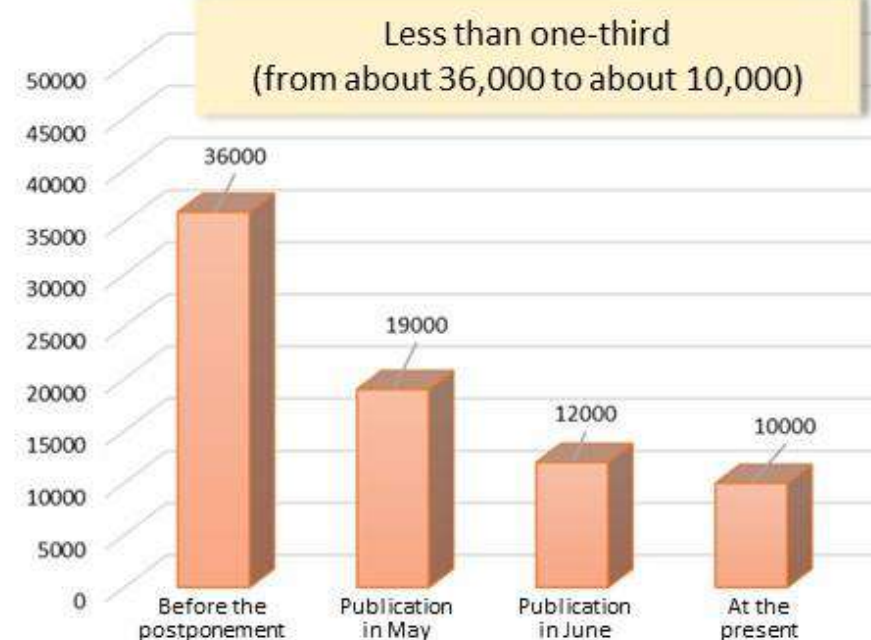
## Number of Olympic Official Who Entered Japan during the Olympic Games

### Olympic



The Games were simplified and acceptance of spectators from overseas countries was given up. Then, reduction of the number of officers was requested

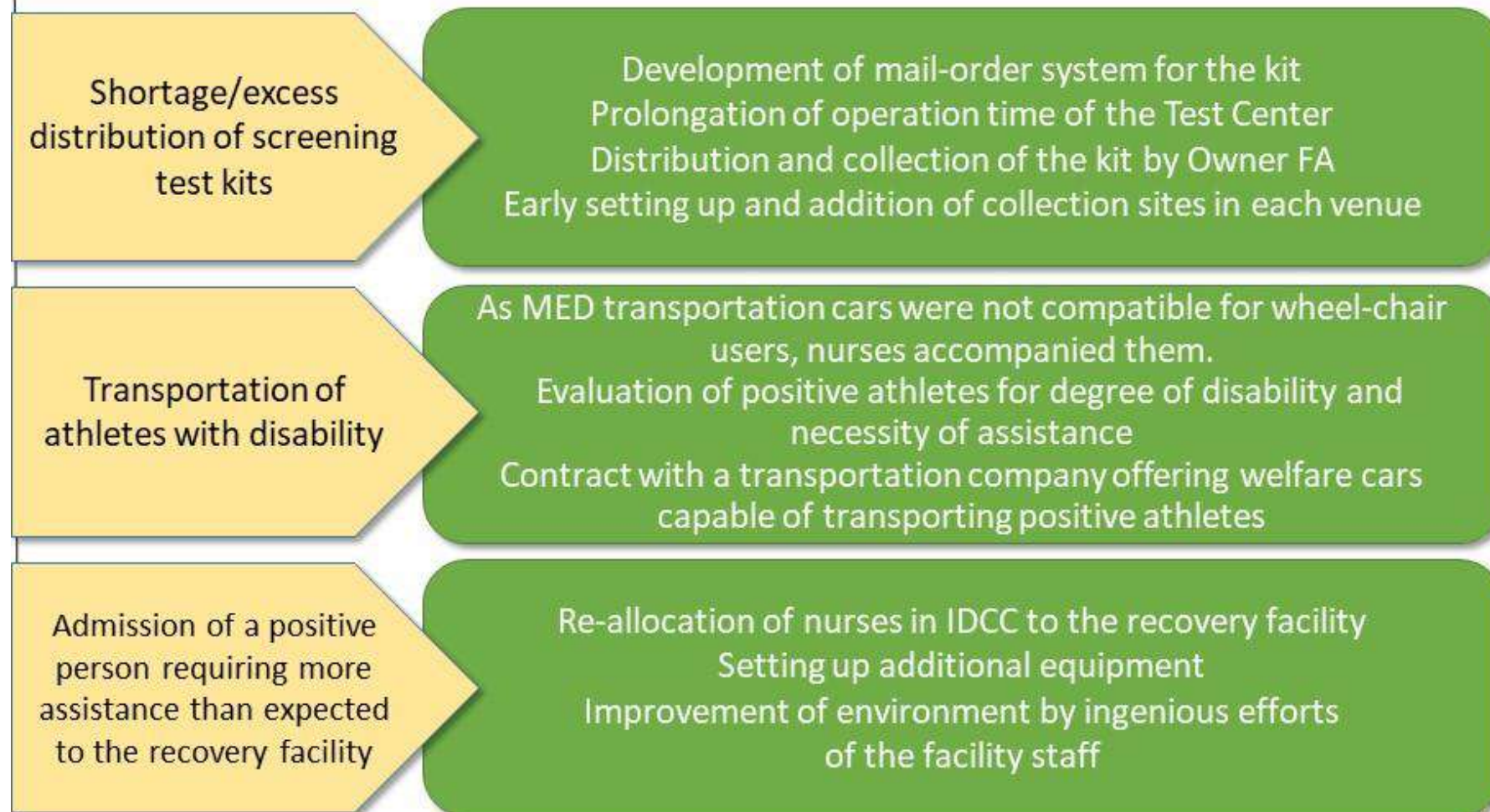
### Paralympic



\*Except athletes and general spectators  
 \*Estimated numbers

Data in the 47<sup>th</sup> Board Meeting of Tokyo 2020, Resolution Matters  
<https://www.tokyo2020.jp/ja/news/news-20210528-01-jp/index.html>

## Issues during the Games and Measures for Them



Data in the 47th Board Meeting of Tokyo 2020, Resolution Matters  
<https://www.tokyo2020.jp/ja/news/news-20210528-01-jp/index.html>

## Outline of Athlete's Village

- Athlete's Village (Main Village) was in Harumi District, Chuo Ward. Its site area was about 44 ha
- It had 21 Residence Buildings, Main Dining Hall, Complex Facility and Village Plaza, to provide an environment where athletes lived safely, securely and comfortably.

Major facility	Outline
Residence Buildings	Twenty-one 14- to 18-story permanent buildings providing 18,000 beds for the Olympic Games and 8,000 beds for the Paralympic Games
Main Dining Hall	A two-story building of temporary structure providing meals for 24 hours a day.
Complex Facility	A three-story permanent building with General Clinic (9 departments in the Olympic Games and 10 departments in the Paralympic Games), Casual Dinning, Recreation Center, and Fitness Center to provide services
Village Plaza	A facility using wood material borrowed from the nationwide local governments in various parts. It provided a variety of services to support athletes' life such as banks, variety stores, hair salons, Japanese Culture Corner and Official Shop etc.

Data in the 47th Board Meeting of Tokyo 2020, Resolution Matters  
<https://www.tokyo2020.jp/ja/news/news-20210528-01-jp/index.html>

## Panoramic View of Athlete's Village



Data in the 47th Board Meeting of Tokyo 2020, Resolution Matters  
<https://www.tokyo2020.jp/ja/news/news-20210528-01-jp/index.html>

## Provision of Meals in Athlete's Village

### Main Dining Hall

- Number of menus: about 700
- Number of meals provided: about 870,000
- Number of seats: 3,000 seats for the Olympic Games/2,400 seats for Paralympic Games
- It responded to various needs for example by setting a gluten-free meal corner, which was set for the first time in these Games.

### Grab and Go

- Number of sites: 4
- Number of menus: 19
- Number of meals provided: about 50,000

### Casual Dining

- Number of menus: about 200
- Number of meals provided: about 60,000
- Number of seats: 280 seats for the Olympic Games/250 seats for Paralympic Games
- Origins of the food materials: The food materials were provided from the 47 prefectures in turn.
- Food materials from the 3 prefectures in Tohoku suffering the Great Earthquake and Tokyo were offered every day.

Data in the 47th Board Meeting of Tokyo 2020, Resolution Matters  
<https://www.tokyo2020.jp/ja/news/news-20210528-01-jp/index.html>