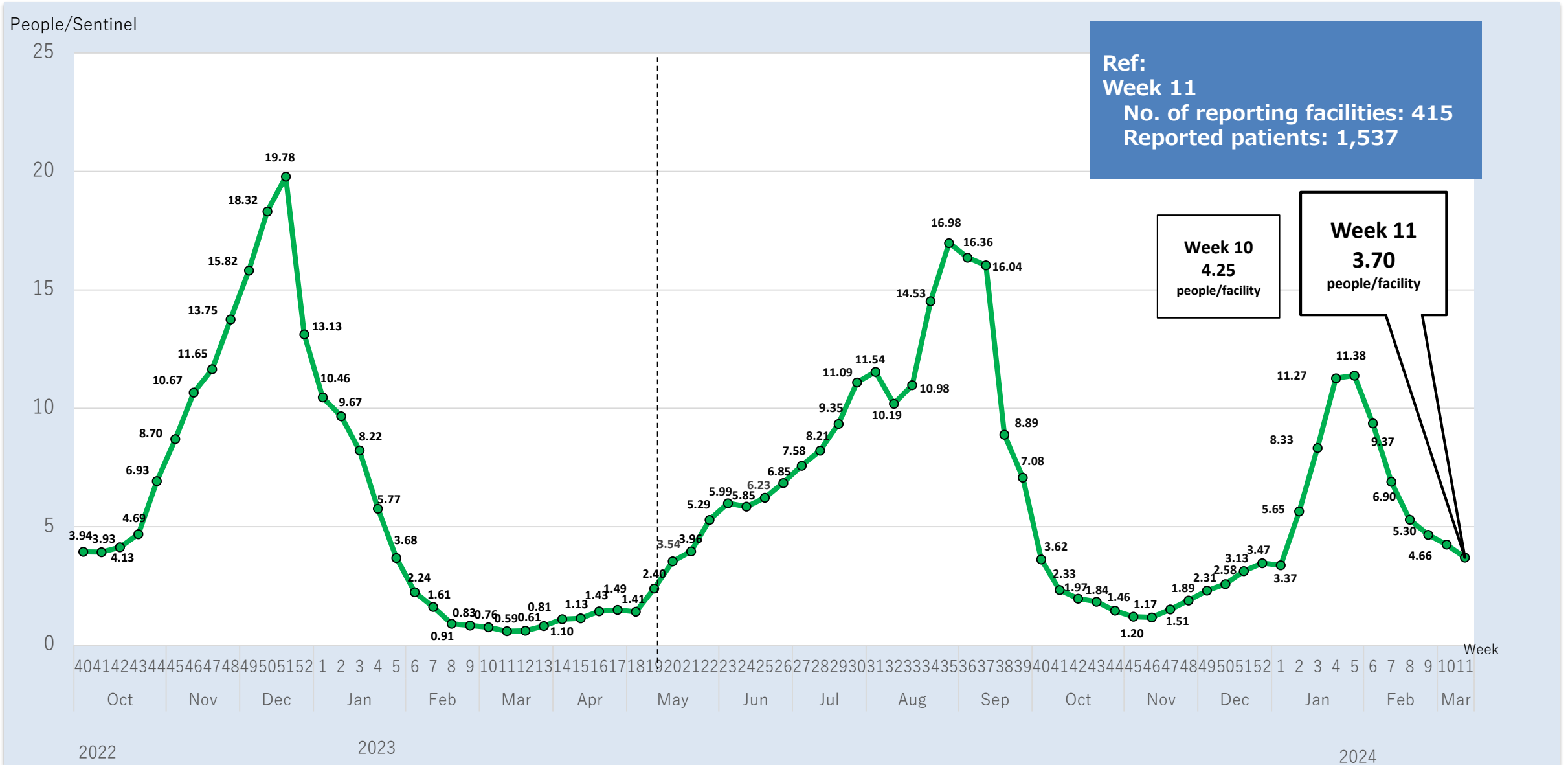


	Monitored Categories	This Week	Last Week	Expert Analysis	
	*① is the 7-day total, ②③ are 7-day moving averages *⑤ is the percentage of top 3 variants	(Released March 22, 2024)	(Released March 14, 2024)		
Infection Trends	① No. of patients reported per sentinel 【No. of patients reported by fixed point medical facilities ÷ no. of fixed point medical facilities】	3.70 people/fixed point (Week 11(3/11 – 3/17))	4.25 people/fixed point (Week 10 (3/4 – 3/10))	<ul style="list-style-type: none"> ■ The number of patients reported at sentinel continued to decrease for six consecutive weeks. ■ The number of reports of fever to #7119 remained at the same level. ■ The number of cases in which the Tokyo Rule applied remained at the same high level. ■ The number of hospitalizations increased. Pressure on the healthcare system must be closely monitored. ■ The number of patients reported per sentinel decreased. However, people still need to be reminded to take basic infection prevention measures, such as wearing masks, handwashing, and ventilation, and to refrain from going out if they are feeling unwell. ■ Vaccination is especially recommended for seniors and those with pre-existing conditions, who are particularly at risk of severe symptoms. Everyone over 6 months is eligible for a free shot until the end of March. 	
	② Cases of fever reported to #7119(*1) 【7-day moving average】	79.1 cases (3/20)	74.4 cases (3/13)		
Burden on Healthcare System	③ Cases in which the emergency medicine Tokyo rule applied(*2) 【7-day moving average】	125.7 cases (3/20)	119.7 cases (3/13)		
	④ No. of patients admitted to hospital 【Total number of patients admitted】	1,182 people (3/18)	1,061 people (3/11)		
Variant Monitoring	⑤ Pathogen surveillance (genome analysis) 【Findings of latest genome analysis from Tokyo samples】	JN.1 (BA.2.86 subvariant)	60.5% (2/26-3/3)		68.9% (2/19-2/25)
		BA.2.86	25.6% (2/26-3/3)		18.0% (2/19-2/25)
		EG.5 (XBB.1.9.2 subvariant)	9.3% (2/26-3/3)	9.8% (2/19-2/25)	
Note: Vaccination rates of residents according to VRS data Vaccination started Autumn 2023 (Sept. 20, 2023); elderly (aged 65+)			54.0% (3/17)		

*1 Tokyo Fire Department Emergency Telephone Consultation Center, the contact point to assist sick or injured residents who are not sure if they should call an ambulance or which hospital to attend.

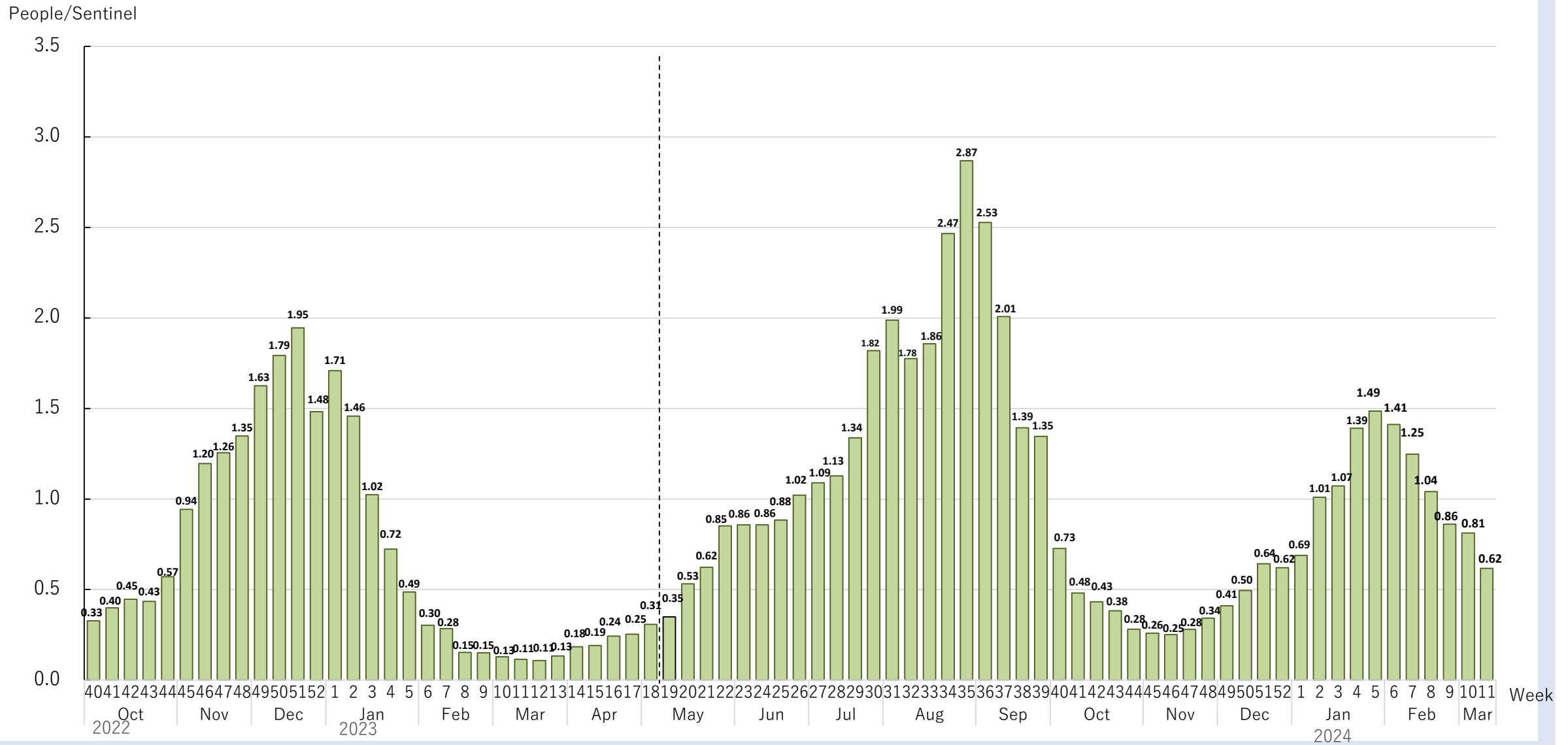
*2 The number of emergency hospital transportations rejected by more than 5 hospitals or requiring more than 20 min before finding an appropriate medical facility.

①-1 Number of Patients Reported Per Sentinel



Note: Revisions may be made retroactively based on reports from medical facilities.

①-2 Number of Patients Reported Per Sentinel Aged 60 Years and Older



Note: Revisions may be made retroactively based on reports from medical facilities.

①-3 Number of Reported Patients in Tokyo Per Sentinel

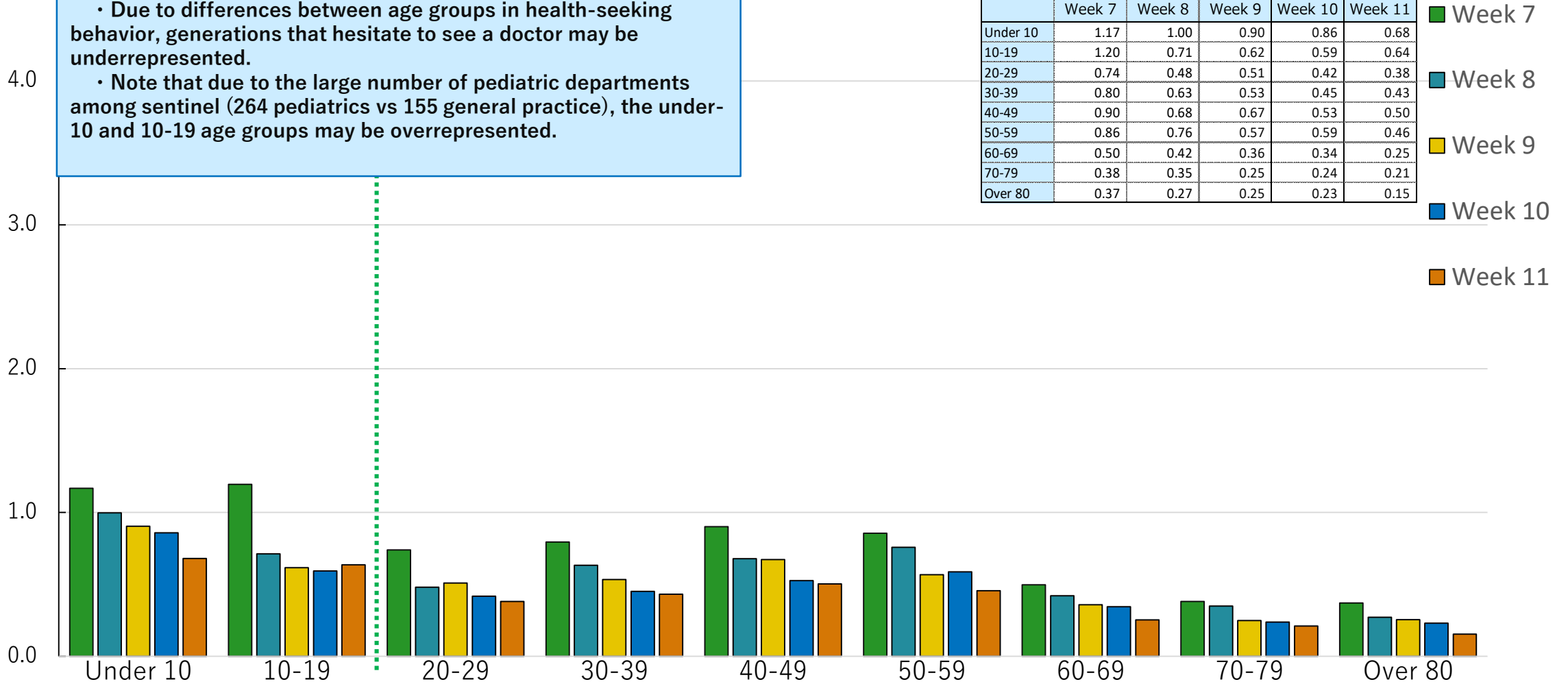
People/Sentinel

< About this graph >

- Due to differences between age groups in health-seeking behavior, generations that hesitate to see a doctor may be underrepresented.
- Note that due to the large number of pediatric departments among sentinel (264 pediatrics vs 155 general practice), the under-10 and 10-19 age groups may be overrepresented.

(Units: People/Sentinel)

	Week 7	Week 8	Week 9	Week 10	Week 11
Under 10	1.17	1.00	0.90	0.86	0.68
10-19	1.20	0.71	0.62	0.59	0.64
20-29	0.74	0.48	0.51	0.42	0.38
30-39	0.80	0.63	0.53	0.45	0.43
40-49	0.90	0.68	0.67	0.53	0.50
50-59	0.86	0.76	0.57	0.59	0.46
60-69	0.50	0.42	0.36	0.34	0.25
70-79	0.38	0.35	0.25	0.24	0.21
Over 80	0.37	0.27	0.25	0.23	0.15

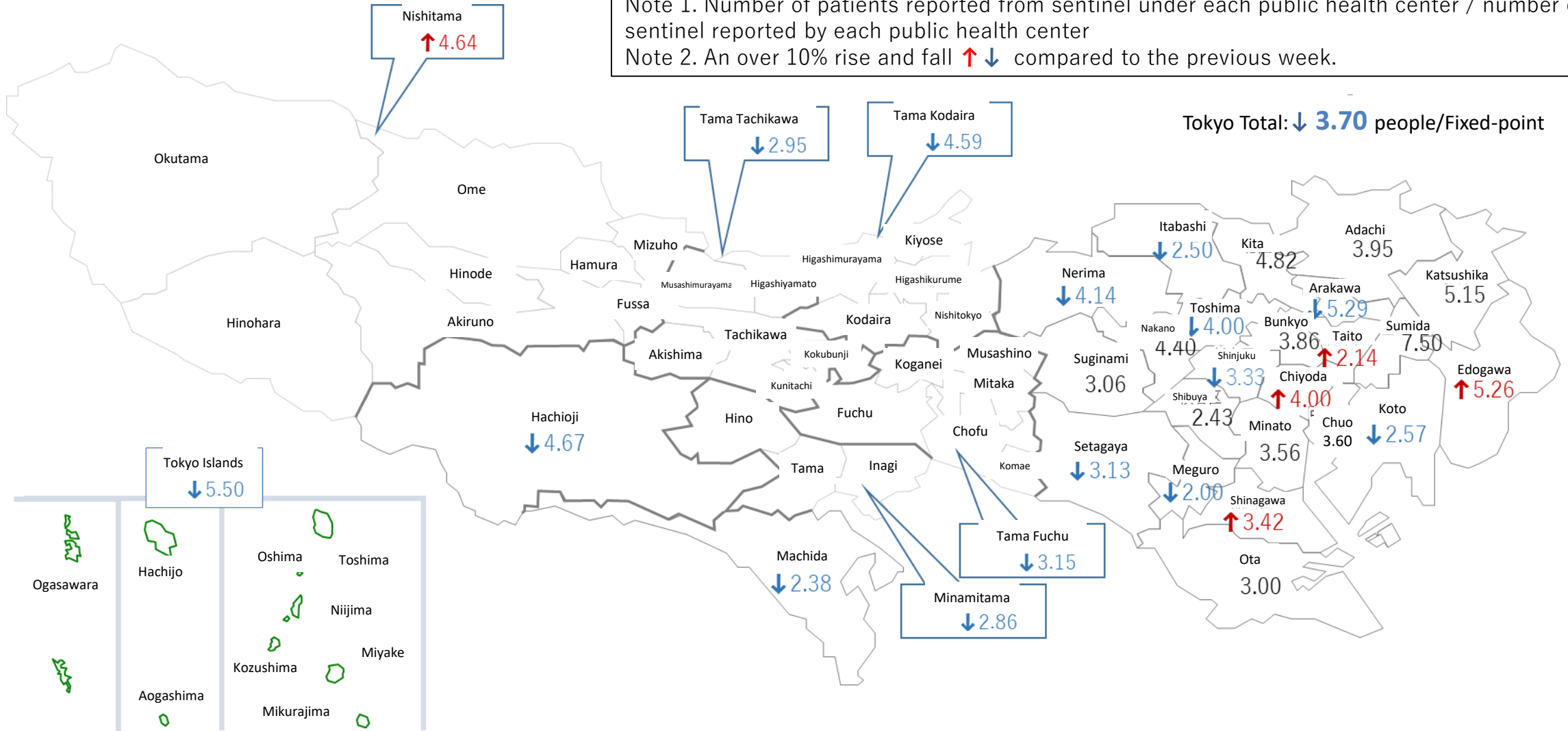


Note 1. Revisions may be made retroactively based on reports from medical facilities.

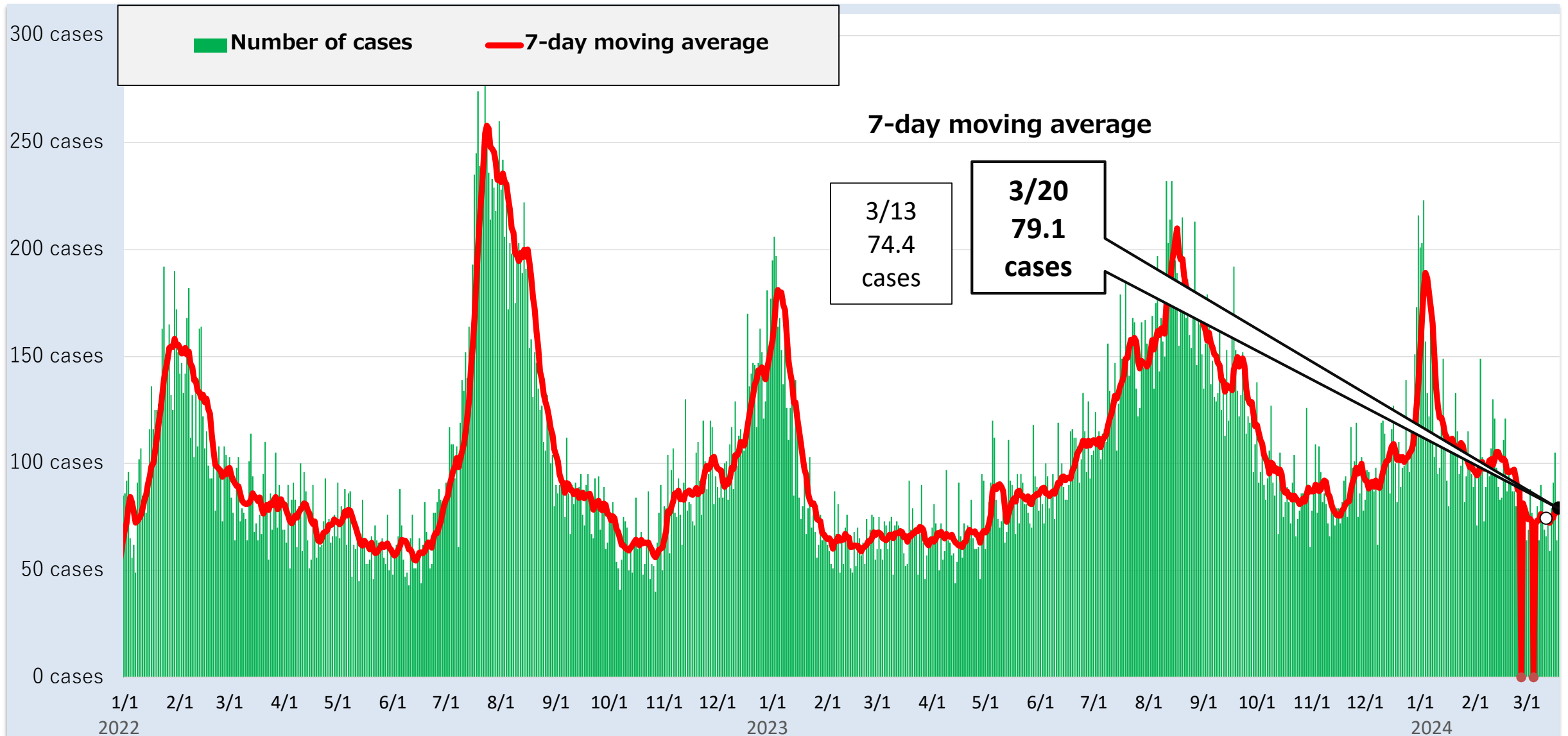
Note 2. Figures reported per sentinel by age group do not necessarily add up to the overall total as the third place after the decimal point is rounded up or down.

①-4 Number of Patients Reported Per Sentinel (by public health center district Week 11 (3/11 – 3/17))

Note 1. Number of patients reported from sentinel under each public health center / number of sentinel reported by each public health center
 Note 2. An over 10% rise and fall ↑↓ compared to the previous week.

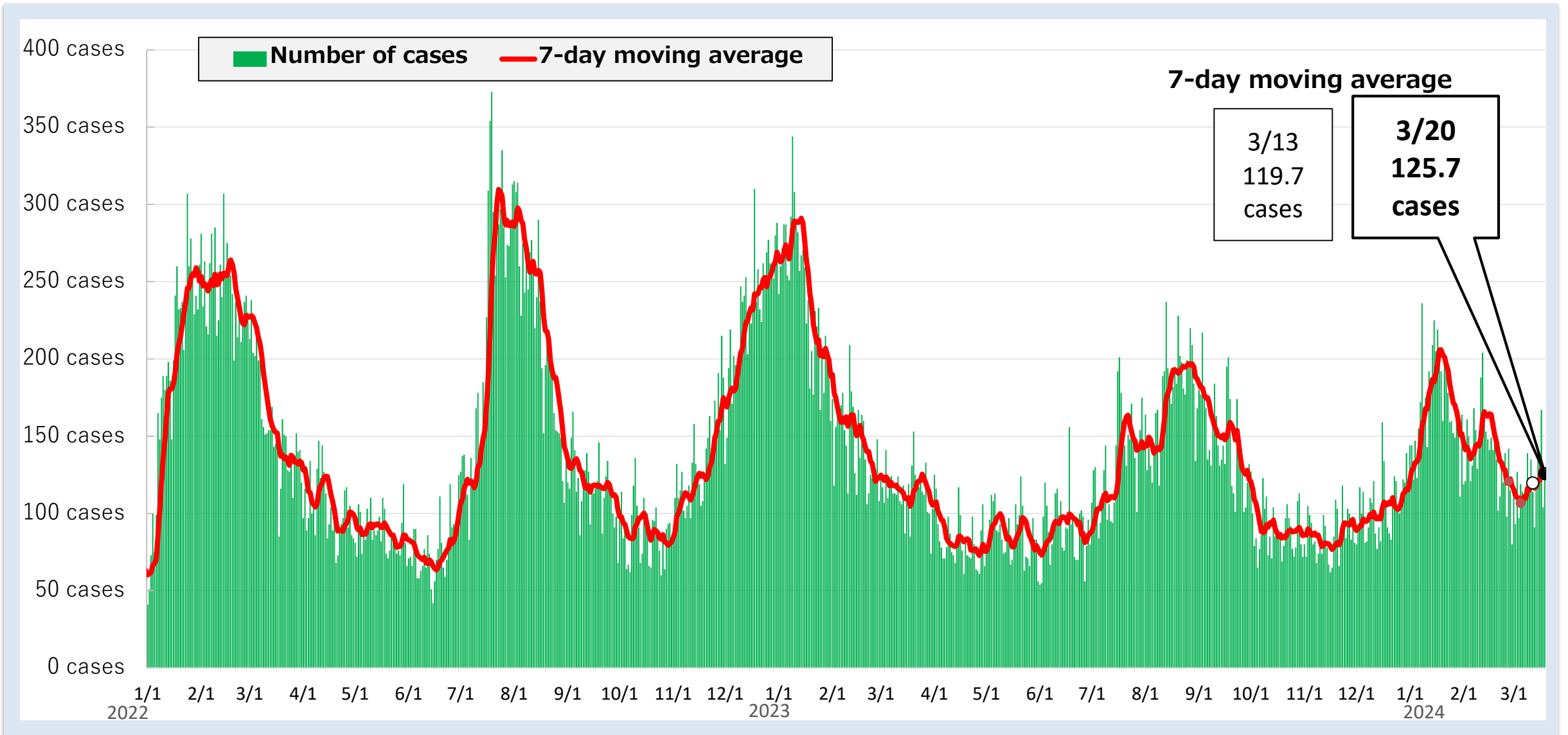


② Number of Calls to #7119 related to fever, etc.



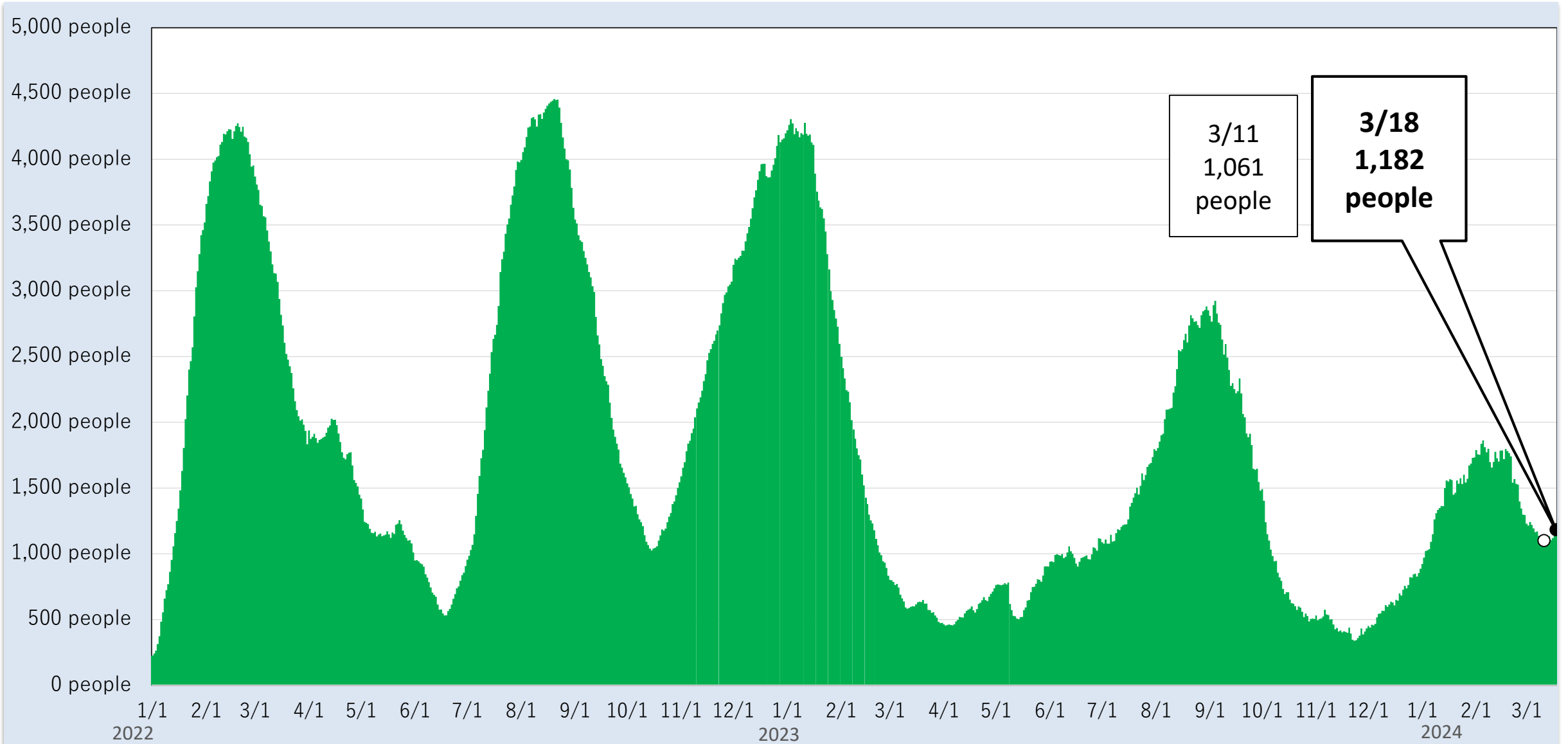
Note: Daily results fluctuate due to variations in the number of cases depending on the day of the week and other factors. In order to smooth out these variations and see overall trends, the number of calls to #7119 was calculated as the 7-day moving average.

③ Number of Cases Under the “Tokyo Rule for Emergency Medical Care”



Note: Daily results fluctuate due to variations in the number of cases depending on the day of the week and other factors. In order to smooth out these variations and see overall trends, the number of cases was calculated as the 7-day moving average.

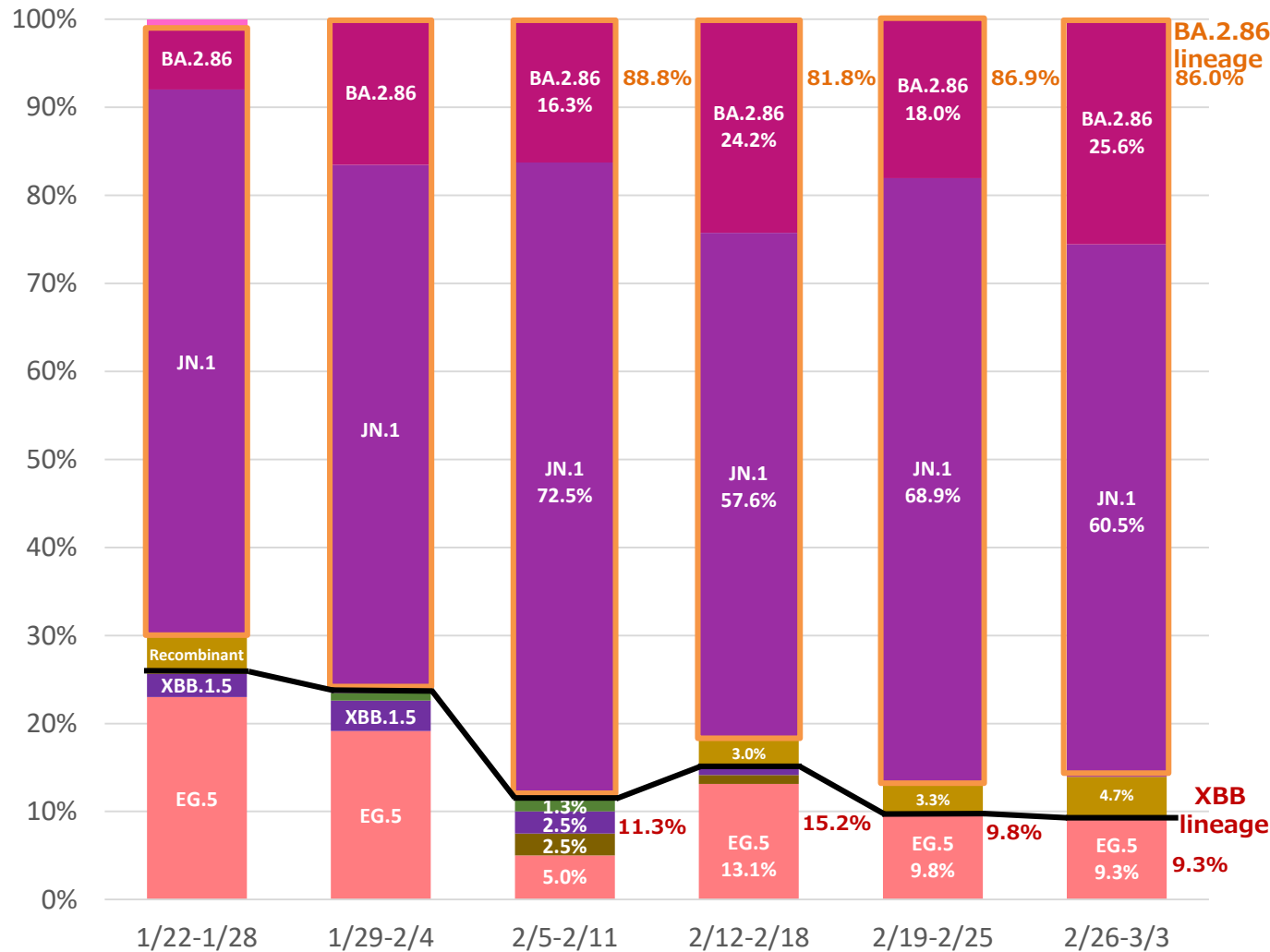
④ Hospitalized Patients



Note: Revisions may be made retroactively based on reports from medical facilities.

⑤ Pathogen Surveillance (Genome Analysis)

(As of 10:00, March 22, 2024)



	2/19-2/25	2/26-3/3	Change	(Actual number)	
	2/19-2/25	2/26-3/3		2/19-2/25	2/26-3/3
JN.1 <small>(BA.2.86 subvariant)</small>	68.9%	60.5%	↓	42	26
BA.2.86	18.0%	25.6%	↑	11	11
EG.5 <small>(XBB.1.9.2 subvariant)</small>	9.8%	9.3%	↔	6	4
Recombinant variants <small>(XBB excl.)</small>	3.3%	4.7%	↑	2	2
XBB.1.5	0.0%	0.0%	→	0	0
XBB.1.16	0.0%	0.0%	→	0	0
XBB.1.9.1	0.0%	0.0%	→	0	0
BA.2.75	0.0%	0.0%	→	0	0
XBB.2.3	0.0%	0.0%	→	0	0
XBB.1.9.2	0.0%	0.0%	→	0	0
XBB	0.0%	0.0%	→	0	0

*Change of 1.0% pt. or more
 Change of 0.5% pt. or more

*Results of genome analysis of specimens from Tokyo, reported in the past 6 weeks (preliminary).
 *Subject to updates based on additional reports.
 *BA.2.86, JN.1 are recorded separately. XBB.1.5, XBB.1.9.1, XBB.1.9.2, EG.5, XBB.1.16, XBB.2.3 are recorded separately (the figures for XBB include XBB lineage other than those listed).
 (Per the Pango lineage nomenclature at the time of reporting)