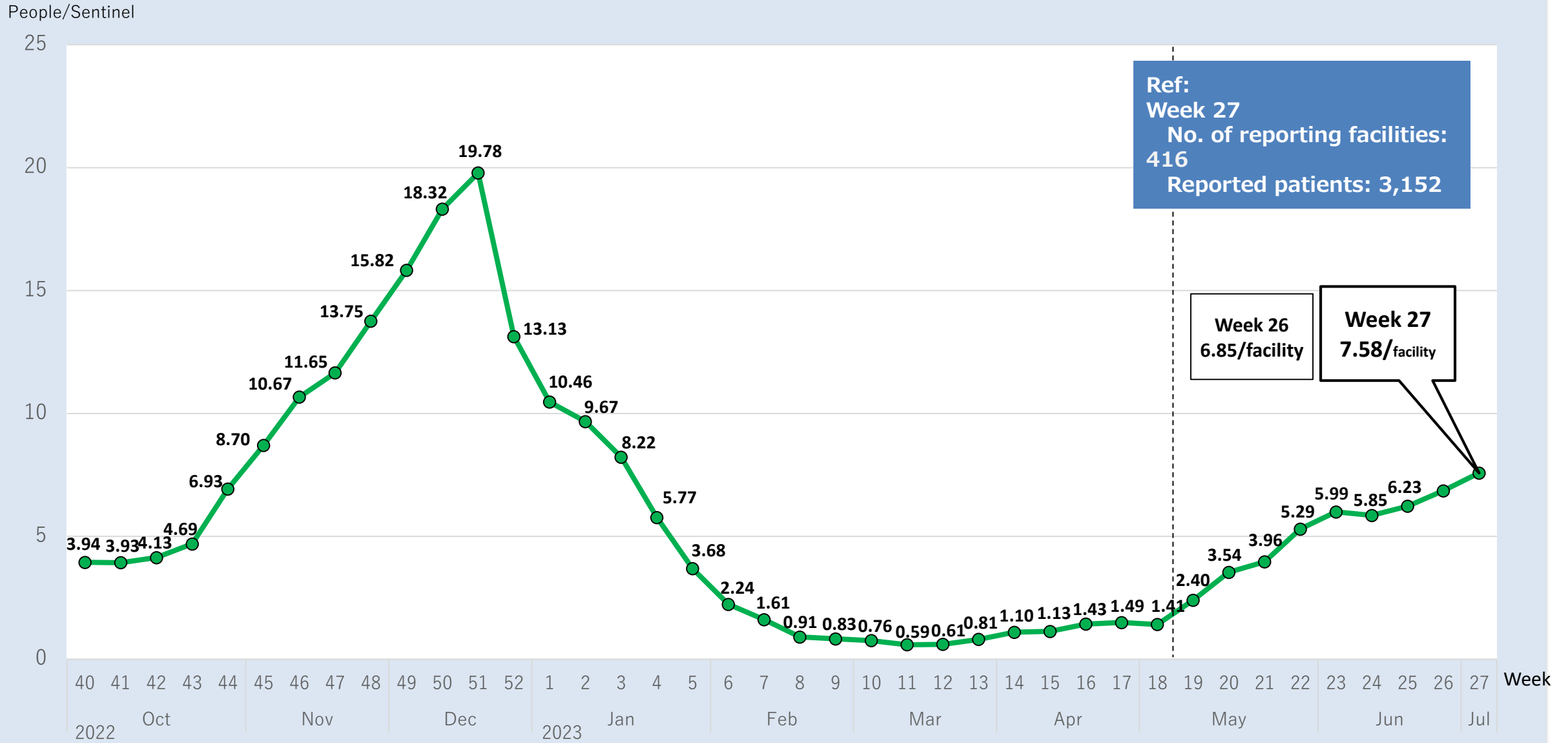


| | Monitored categories *① is the 7-day total, ②③ are 7-day moving averages *⑤ is the percentage of top 3 variants | | This week (released July 12, 2023) | Last Week (released June 29, 2023) | Expert analysis |
|---|--|------------------|--|--|---|
| Infection trends | ① No. of patients reported per sentinel <small>【No. of patients reported by fixed point medical facilities ÷ no. of fixed point medical facilities】</small> | | 7.58 people/fixed point (Week 27 (7/3 – 7/9)) | 6.85 people/fixed point (Week 26 (6/26 – 7/2)) | <p>■ The number of patients reported per sentinel continued to rise slowly, but it is necessary to pay close attention to future trends.</p> <p>■ Numbers of reports of fever and applications of the Tokyo Rule were largely unchanged.</p> <p>■ The number of hospitalized patients remained largely unchanged this week and there is no significant burden on the healthcare system. Meanwhile, children receiving medical examinations for other febrile diseases are increasing. Tokyo residents need to be informed that in case of doubt about consulting a doctor, they can speak to COVID-19 Consultation Center, #7119 or Children's Medical Hotline (#8000).</p> <p>■ Ideally, people will continue to take infection prevention measures appropriate to the setting such as ventilating spaces, handwashing and masking, depending on the venue.</p> <p>■ Early vaccination is also recommended for seniors, who are particularly at risk of severe symptoms.</p> |
| | ② Cases of fever reported to #7119(*1) <small>【7-day moving average】</small> | | 122.9 cases (7/12) | 111.6 cases (7/5) | |
| Burden on health system | ③ Cases in which emergency medicine Tokyo Rule applied(*2) <small>【7-day moving average】</small> | | 109.3 cases (6/21) | 102.7 cases (7/3) | |
| | ④ No. of patients admitted to hospital <small>【Total number of patients admitted】</small> | | 1,176 people (7/12) | 1,089 people (6/12) | |
| Variant monitoring | ⑤ Pathogen surveillance (genome analysis) <small>【Findings of latest genome analysis from Tokyo samples】</small> | XBB.1.16 | 20.0% (6/19-6/25) | 33.6% (6/12-6/18) | |
| | | XBB.1.9.2 | 20.0% (6/19-6/25) | 10.9% (6/12-6/18) | |
| | | XBB.2.3 | 18.0% (6/19-6/25) | 9.1% (6/12-6/18) | |
| Note: Vaccination rates of residents according to VRS data Vaccination started spring 2023 (May 8, 2023); elderly (aged 65+) | | | 48.6% (7/9) | | |

*1. Tokyo Fire Department Emergency Telephone Consultation Center, the contact point to assist sick or injured residents who are not sure if they should call an ambulance or which hospital to attend.

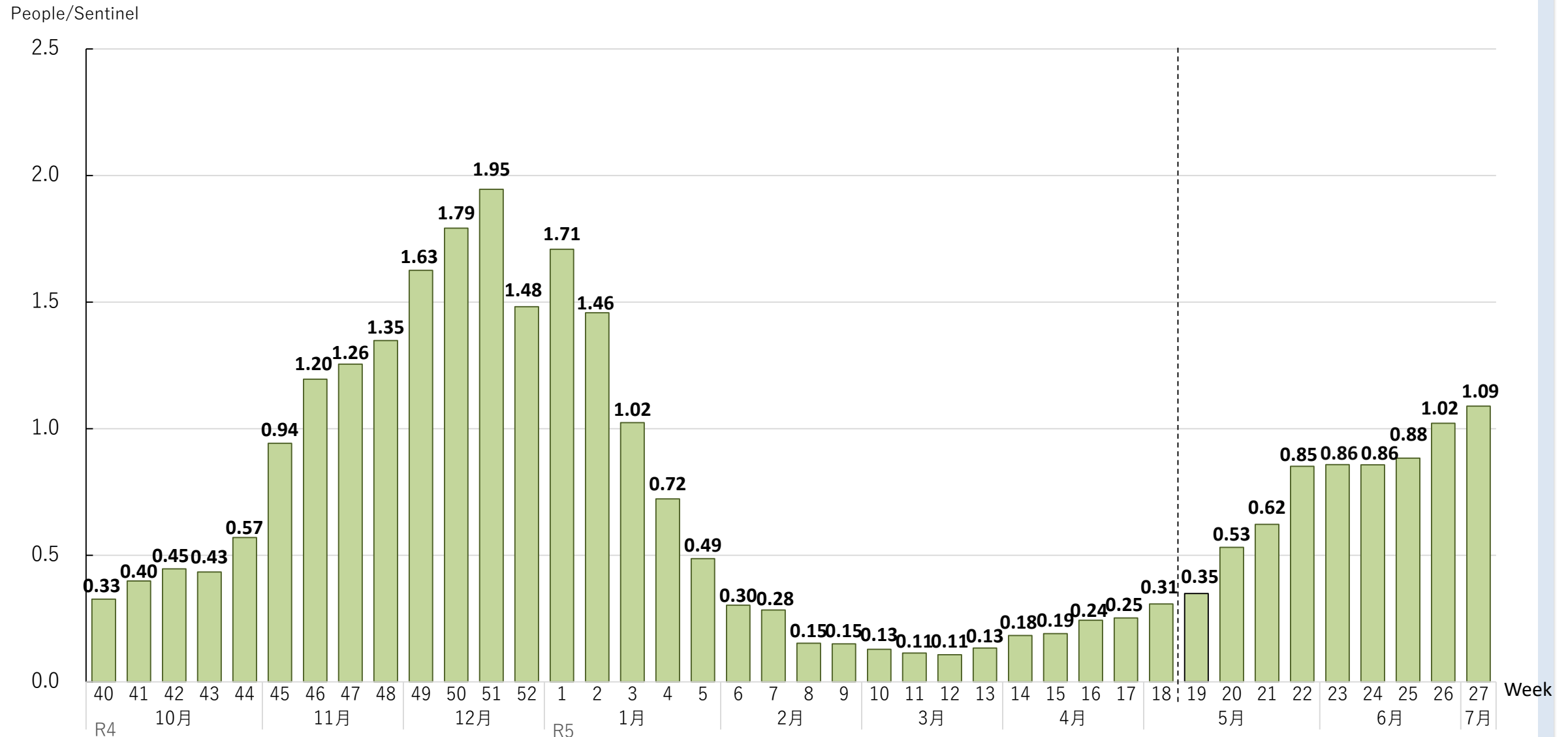
*2. The number of emergency hospital transportations rejected by more than 5 hospitals or requiring more than 20 min before finding an appropriate medical facility

①-1 No. of patients reported per sentinel



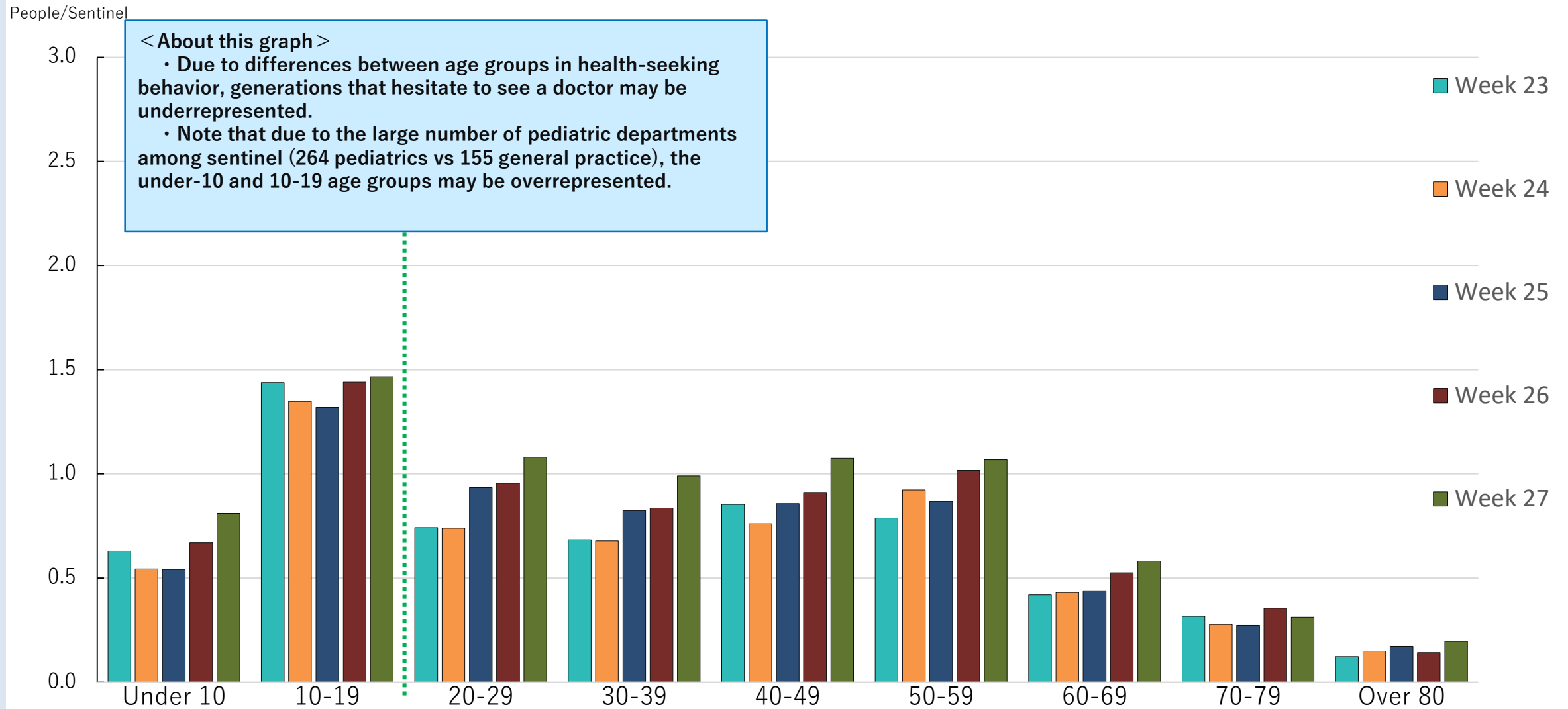
Note: Revisions may be made retroactively based on reports from medical facilities.

①-2 Number of patients reported per sentinel aged 60 years and older



Note: Revisions may be made retroactively based on reports from medical facilities.

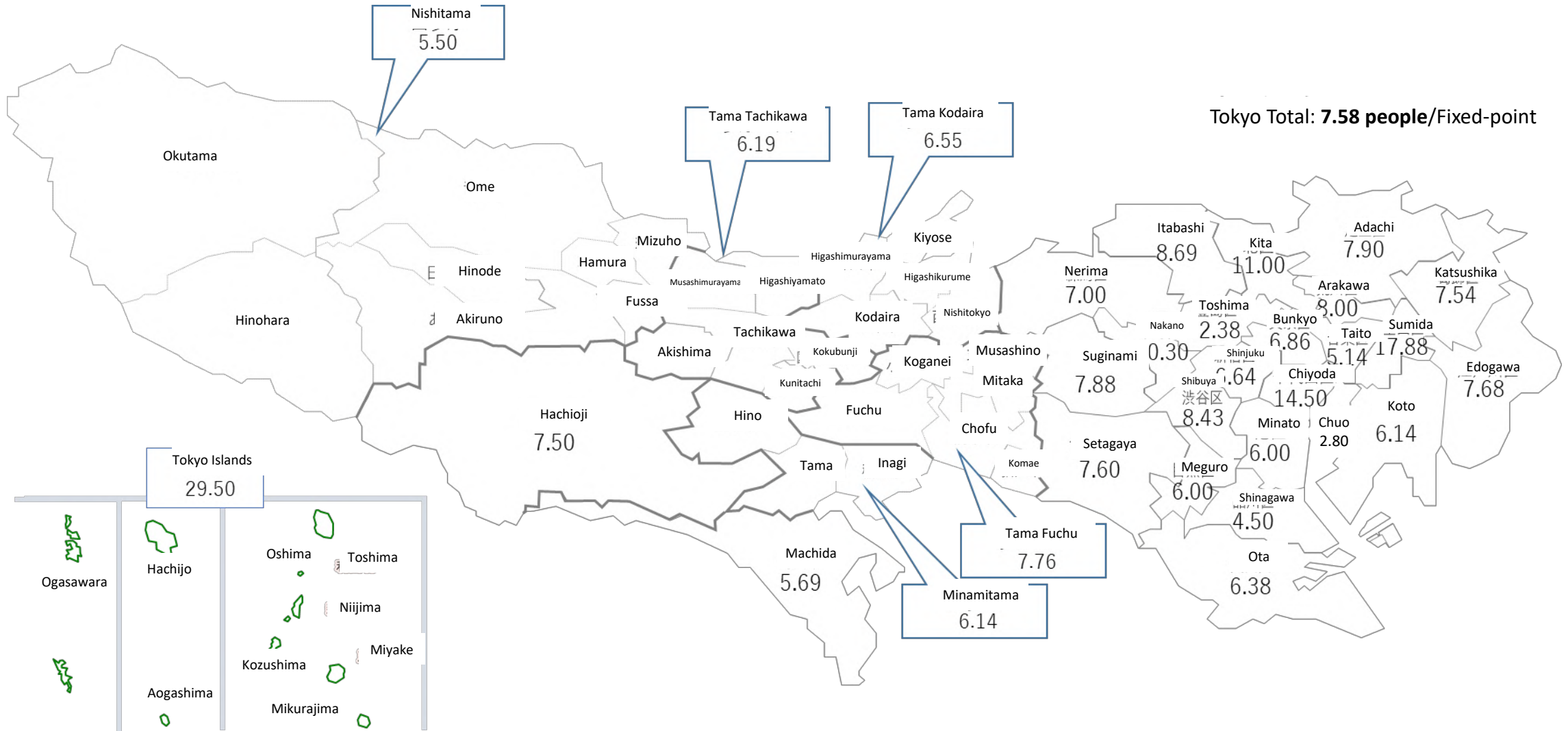
①-3 No. of reported patients in Tokyo per sentinel by age group



Note 1. Revisions may be made retroactively based on reports from medical facilities.

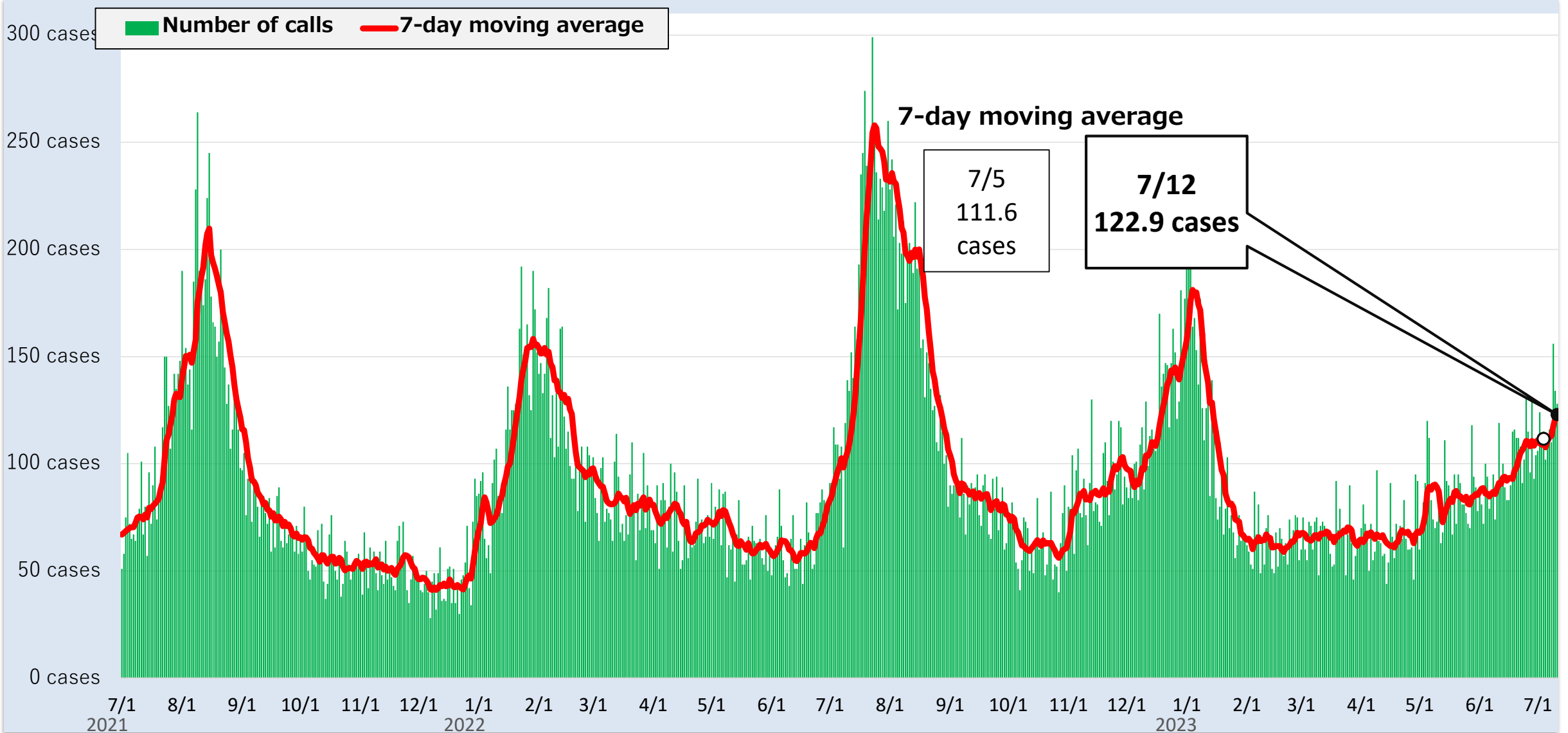
Note 2. Figures reported per sentinel by age group do not necessarily add up to the overall total as the third place after the decimal point is rounded up or down

**①-3 No. of patients reported per sentinel
(by public health center district, Week 27 (July 3-9))**



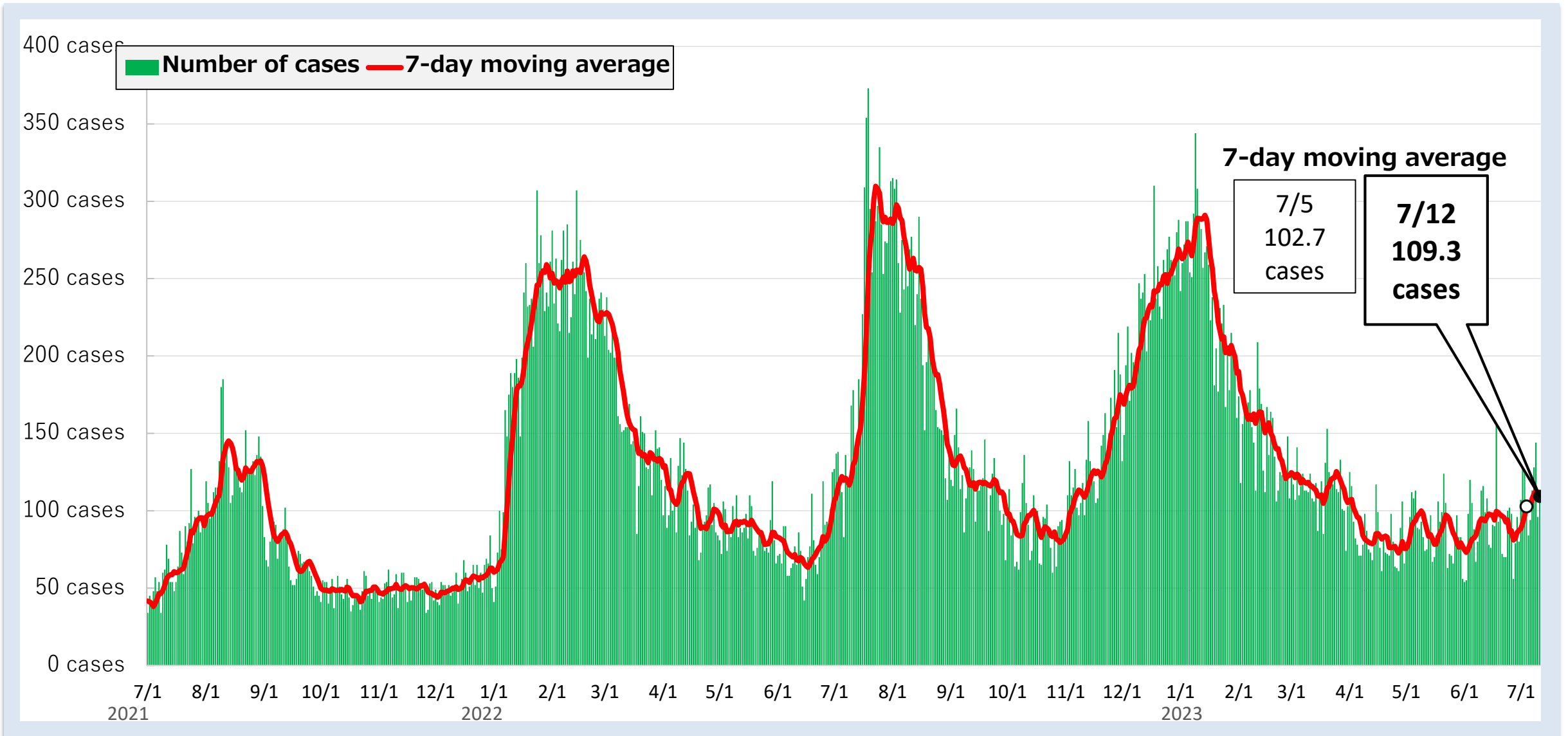
Note; Number of people reported from sentinel under each public health center / number of sentinel reported by each public health center

② Number of calls to #7119 related to fever, etc.



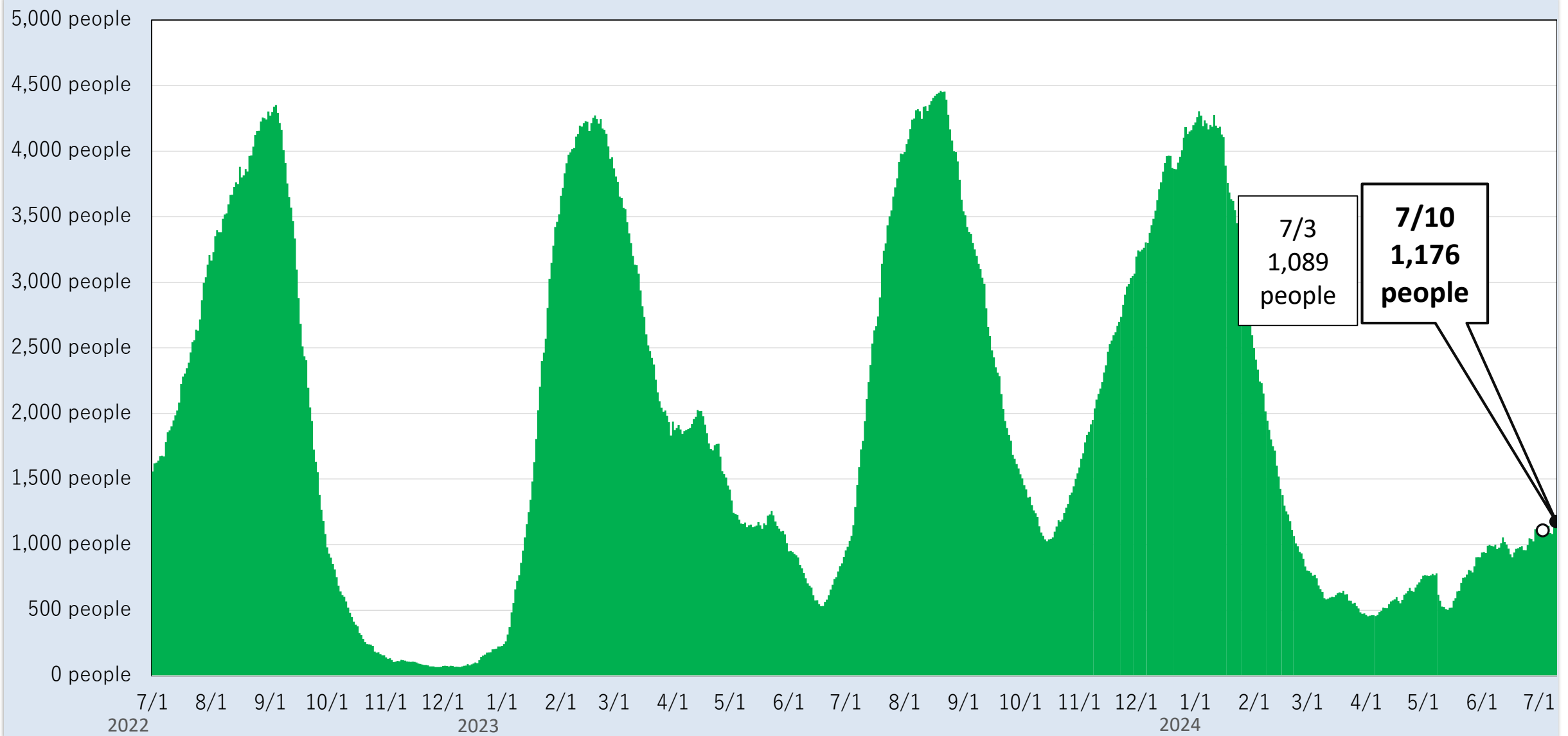
Note: Daily results fluctuate due to variations in the number of cases depending on the day of the week and other factors. In order to smooth out these variations and see overall trends, the number of calls to #7119 was calculated as the 7-day moving average.

③ Number of cases under the “Tokyo Rule for Emergency Medical Care”



Note: Daily results fluctuate due to variations in the number of cases depending on the day of the week and other factors. In order to smooth out these variations and see overall trends, the number of cases was calculated as the 7-day moving average.

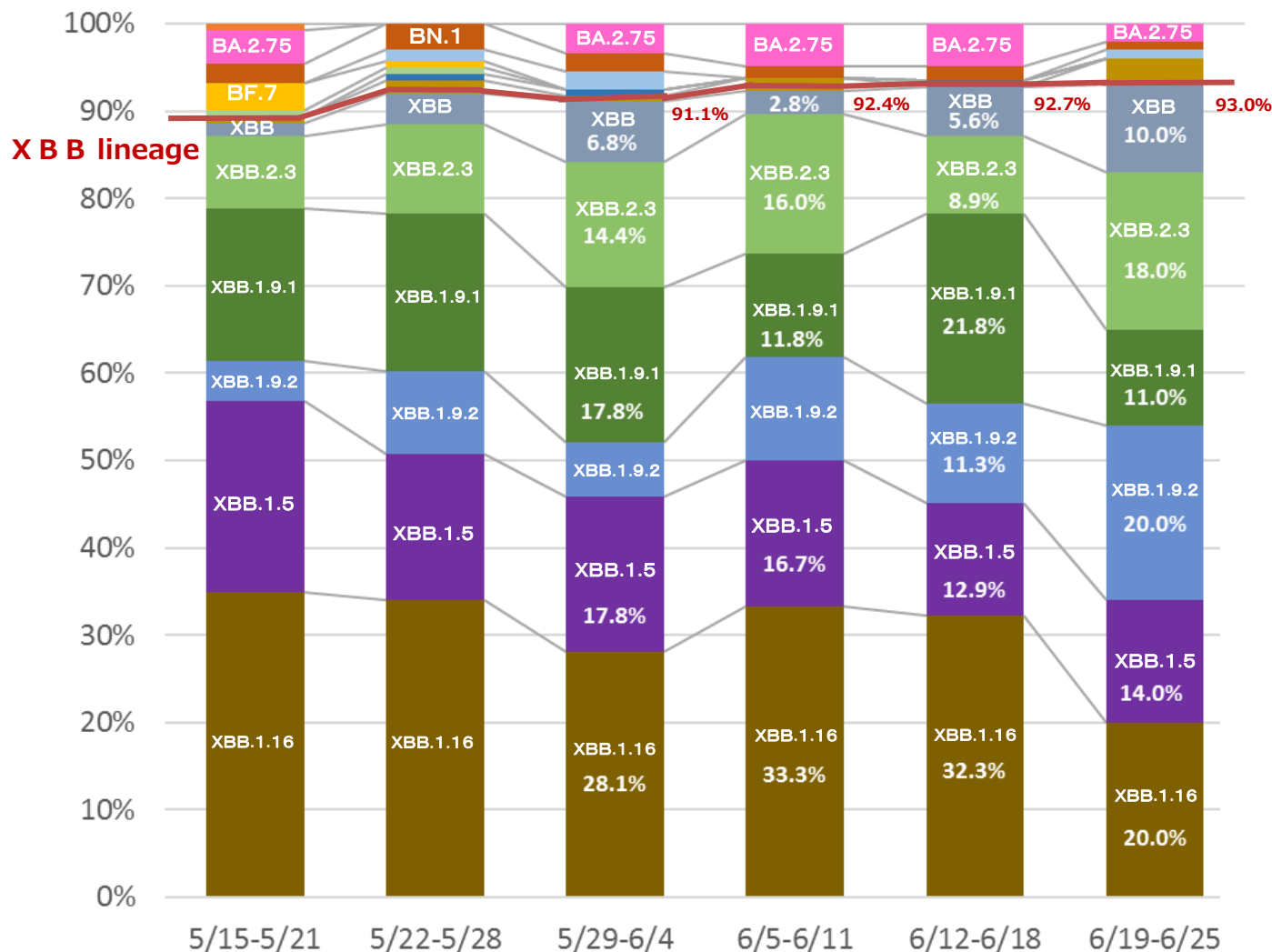
④ Hospitalized patients



Note: Revisions may be made retroactively based on reports from medical facilities.

⑤ Pathogen surveillance (genome analysis)

(As of 12:00 July 17, 2023)



| | 6/12-6/18 | 6/19-6/25 | Change | 6/12-6/18 (Actual numbers) | 6/19-6/25 (Actual numbers) |
|----------------------------------|-----------|-----------|--------|----------------------------|----------------------------|
| XBB.1.16 (XBB subvariant) | 32.3% | 20.0% | ↓ | 40 | 20 |
| XBB.1.9.2 (XBB subvariant) | 11.3% | 20.0% | ↑ | 14 | 20 |
| XBB.2.3 (XBB subvariant) | 8.9% | 18.0% | ↑ | 11 | 18 |
| XBB.1.5 (XBB subvariant) | 12.9% | 14.0% | ↑ | 16 | 14 |
| XBB.1.9.1 (XBB subvariant) | 21.8% | 11.0% | ↓ | 27 | 11 |
| X B B | 5.6% | 10.0% | ↑ | 7 | 10 |
| Recombinant variants (excl. XBB) | 0.0% | 3.0% | ↑ | 0 | 3 |
| B A . 2 . 7 5 | 4.8% | 2.0% | ↓ | 6 | 2 |
| B N . 1 (BA.2.7.5 subvariant) | 1.6% | 1.0% | ↔ | 2 | 1 |
| B A . 5 | 0.0% | 1.0% | ↑ | 0 | 1 |
| B A . 2 | 0.0% | 0.0% | → | 0 | 0 |
| B F . 7 (BA.5 subvariant) | 0.0% | 0.0% | → | 0 | 0 |
| B Q . 1 (BA.5 subvariant) | 0.0% | 0.0% | → | 0 | 0 |
| B Q . 1 . 1 (BA.5 subvariant) | 0.8% | 0.0% | ↔ | 1 | 0 |

*Change of 1.0% pt or more
 Change of 0.5% pt or more

*Results of genome analysis of specimens from Tokyo, reported in the past 6 weeks (preliminary).

*Subject to updates based on additional reports

*BA.2, BA.2.12.1, BA.2.75, and BN.1 are recorded separately. BA.4 and BA.4.6 are recorded separately. BA.5, BF.7, BQ.1, and BQ.1.1 are recorded separately. XBB.1.5, XBB.1.9.1, XBB.1.9.2, XBB.1.16 and XBB2.3 are recorded separately (the figures for XBB include XBB lineage other than those listed). (Per the Pango lineage nomenclature at the time of reporting)