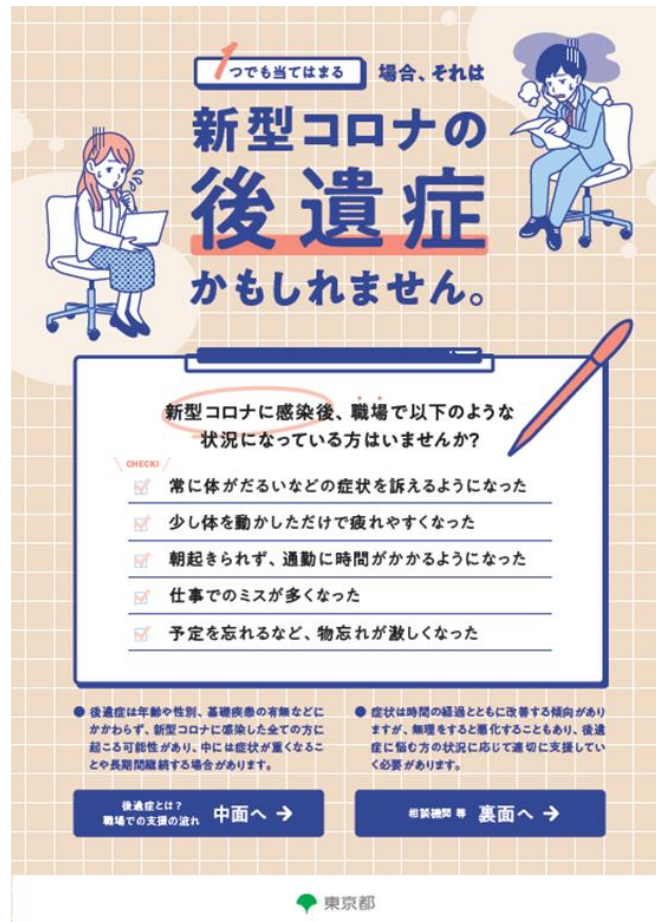


A leaflet was produced for business leaders and HR managers to help increase business' knowledge of long Covid from the perspective of balancing treatment of the condition and work.



Key content

- **Symptoms seen in employees**
 - ✓ Including cases from workplaces with checklists and illustrations
 - **Flow of workplace supports and key points**
 - ✓ Clarification of steps to be taken by worker and considerations for the workplace
 - **Actual cases of steps taken in workplace**
 - ✓ Introduction of case studies
 - **Public subsidies/advisory organizations**
- **Explanation video from Tokyo iCDC expert posted (use QR code to view)**

Target audience

- **Dissemination to member companies through business groups**※
 - *Tokyo Chamber of Commerce and Industry, Tokyo Federation of Chambers of Commerce and Industry, Association of Small and Medium Sized Business Entrepreneurs (Chuokai), Tokyo Employers Association
- **Posted on TMG website as of today**

Goal

To update participants of the latest knowledge and information regarding Long Covid, including research findings and treatments, and to share information on approaches to assist those suffering with Long Covid to return to the workplace

Date and time

Sunday June 25, 2023

2:30 p.m. to 4:30 p.m.
(live stream begins at 2pm)

Format

Web-based (live stream)

Audience

Healthcare employees including doctors, nurses and pharmacists

Applicants 1,261

(breakdown)

Doctors 672

Pharmacists 267

Nurses 171

Program (draft)

1 Opening remarks: Kaku Mitsuo Director, Tokyo iCDC, Department of Infectious Diseases, Tohoku University Graduate School of Medicine, Specially Appointed Professor, Tohoku University

2 Presentations

① Update on post-Covid overseas

Osaka Ken Tokyo iCDC, Head of Residual Symptoms Taskforce, Professor, Graduate School of Tohoku University

② Update on residual symptoms of COVID-19

Morioka Shinichiro National Center for Global Health and Medicine, Chief, International Infection Control Team, Disease Control and Prevention Center

③ Residual symptoms and an industrial medicine approach

Tateishi Seiichiro Professor, University of Occupational and Environmental Health Japan, Disaster Occupational Health Center

Igarashi Yu University of Occupational and Environmental Health Japan, Disaster Occupational Health Center

3 Q&A