

(7) Health Crisis Management

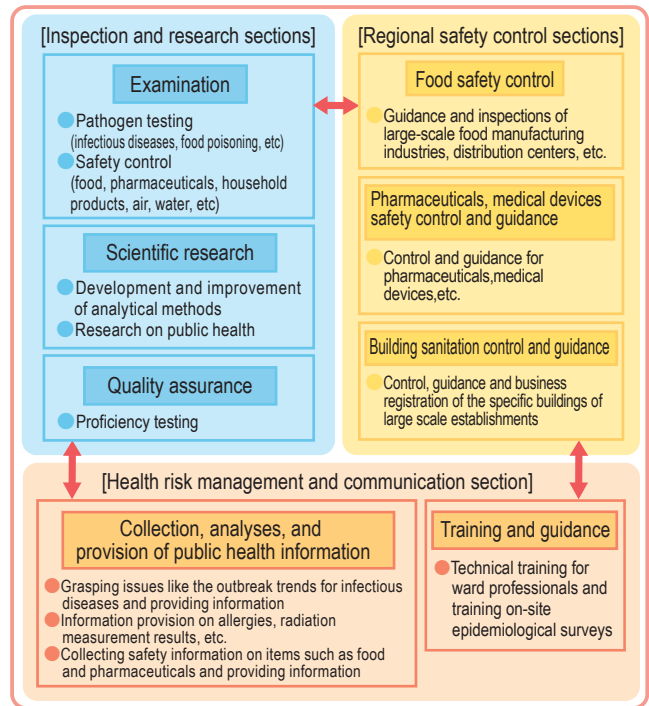
Preparing for a New Health Crisis

In recent years, many issues have occurred one after another related to the health and safety of Tokyo residents, such as the threat of newly emerging and reemerging infectious diseases, including COVID-19, pandemic influenza, outbreaks of Ebola hemorrhagic fever and dengue fever, food poisoning, and dangerous drug abuse. In order to secure health and safety of Tokyo residents and protect them from such diversifying health threats, the TMG is actively strengthening its health crisis management.

Institute of Public Health

The Institute of Public Health provides scientific and technical support for various measures related to health crisis management. As described in the figure, the inspection and research sections, regional safety control sections, and health risk management and communication sections cooperate closely when conducting activities.

In order to protect the lives and health of Tokyo residents, our institute has integrated the functions of collecting, analyzing and disseminating general information related to various health crises, while securing a health crisis management system that responds promptly and flexibly to any possible health crisis.



Infectious Diseases Control against COVID-19

Since confirming the first case of COVID-19 in Tokyo on January 24, 2020, the TMG has been cooperating with various related institutions and taken measures to prevent the increase in infections. The following items are given as details of the main activities and measures implemented against COVID-19.

Tokyo Center for Infectious Disease Control and Prevention "Tokyo iCDC"

Full name: Tokyo Center for Infectious Disease Control and Prevention

Abbreviated name: Tokyo iCDC

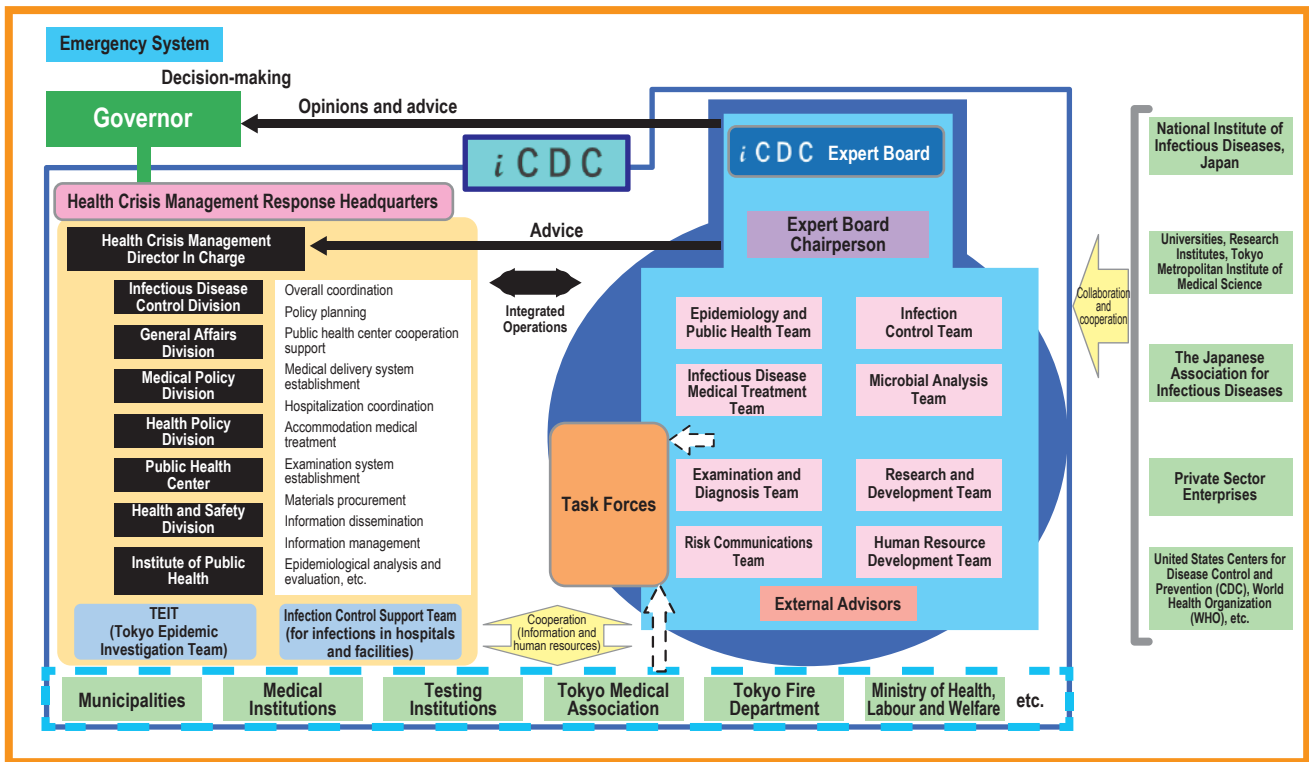
The Tokyo iCDC provides evidence-based advice to the Governor of Tokyo functioning as a "permanent headquarters" which seamlessly handles effective measures relating to infectious diseases, including policy planning, risk management, investigation/analysis/evaluation, and information collection/dissemination.

In normal times, the Center's intelligence functions are enhanced through training public human health resources with local governments and research institutions inside and outside Japan.

At the outbreak of a crisis, best use is made of the normal-period intelligence functions to realize emergency-period operation functions which intend to make rapid and effective responses.

od intelligence functions to realize emergency-period operation functions which intend to make rapid and effective responses.

In the Tokyo iCDC until now, effective information dissemination has been made to metropolitan citizens, including monitoring population volumes visiting downtowns, tracking of the emergence of COVID-19 variants, surveying and analyzing the results of awareness questionnaires targeting 10,000 metropolitan citizens, creating and publicizing documents such as handbooks for persons recuperating at home, collections of infection countermeasure case studies in facilities for the elderly and persons with disabilities, and brochures relating to long COVID. In addition, infection countermeasure support teams are dispatched to hospitals and other facilities where clusters of infections have occurred, and support is provided for measures to prevent the spread of infection.



Establishment of Consultation Centers Related to COVID-19

Regarding COVID-19, the TMG has established a telephone consultation center (COVID-19 Call Center) in order to respond to concerns from Tokyo residents, etc. about becoming infected and provide consultations about infection prevention. In addition, the TMG has established the Tokyo Fever Consultation Center as a telephone consultation center for patients presenting with symptoms such as fevers and for persons who have received notifications from the “COCOA” (COVID-19 contact-confirming app).

Support for Public Health Centers

To support the health center work resulting from the COVID-19 countermeasures, the TMG assigns nurses and public health nurses to metropolitan public health centers to assist with active epidemiological investigations, in addition to establishing bases for supporting public health centers.

Additionally, the Institute of Public Health provides technical support including the dispatch of the Tokyo Epidemic Investigation Team (TEIT) and infection control support teams in response to requests from each of the public health centers.

Support for Patients Recuperating at Home

The TMG has established the “Follow-up Center for Patients Recuperating at Home”, and provides support for patients recuperating at home, such as by monitoring the health of patients, and sending the provisions and pulse oximeters required during the home recuperation.

Additionally, the “Handbook for Home Recuperation for COVID-19” is distributed by packing it together with the provisions, etc. to enable patients to live with peace of mind during the home recuperation period.

Further, the TMG provides support for gaining an understanding of the health conditions of people by medical institutes, telephone and online diagnosis and house calls by community doctors, home care by nurses, health observation of pregnant women by midwives, and delivery of medicines to homes by community drugstores. A Home Recuperation Support Center (Uchisapo Tokyo) was established as a medical care consultation point in cases persons become unwell while recuperating at

home so that recuperating patients who are asymptomatic or have mild symptoms can conduct health self-observations at the time of taking emergency procedures for the infection spread. At Uchisapo Tokyo, delivery of foods and pulse oximeters is conducted and requests are also accepted for general consultations other than medical treatment and health.

Testing System

The TMG supports the establishment of the COVID-19 Outpatient and Community Outpatient Examination Center (PCR Center).

Regarding the PCR testing that is conducted in the medical care institutions, etc. established for COVID-19 outpatient care, the TMG pays the amount that should be borne by individuals when the insurance is applied.

Additionally, the Institute of Public Health implements PCR testing of the samples that were collected by public health centers. For asymptomatic persons, the monitoring testing is also conducted in downtowns, universities, companies and stations, and intensive testing is implemented for staff in facilities for the elderly.

Establishment of an Outpatient Medical Care Delivery System

A COVID-19 outpatient medical care system has been established to provide medical examinations for patients who are suspected to have been infected with COVID-19. Patients with suspected infections consult with the medical examination consultation center and with their family doctor, and a system is developed that smoothly links with medical examinations when judged necessary.

Establishment of Inpatient Medical Care System

Based on the situation where infections are increasing, the TMG is proceeding to establish a medical care delivery system that can support severe cases by applying the medical resources in Tokyo to the maximum extent. The TMG will expand the system in stages in response to the pandemic situation while maintaining normal medical care and the emergency medical care system. The TMG promotes to secure hospital beds focusing on designated medical institutions for infectious disease treatment,

inpatient-prioritized medical care institutions and public medical care institutions in response to the growing number of infections.

In addition, a COVID-19 coordinating headquarters has been established, which cooperates with public health centers to implement hospital stay and hospital transfer coordination.

Establishment and Operation of Accommodation Medical Care Facilities

In order to secure medical care provision for seriously and critically ill patients, patients with no symptoms or mild symptoms who do not necessarily have to undergo treatment in hospital are in principle requested to stay in accommodation medical care facilities, where they will not infect their family members or people living around them while still allowing timely and appropriate responses to be made if there are rapid changes in their symptoms. The TMG is securing and operating the required number of accommodation medical care facilities.

In the accommodation medical care facilities, nurses are stationed, and daily medical monitoring is implemented. Additionally, a system has been developed so that health consultations can be made whenever required. In an emergency when symptoms worsen, patients can receive medical examinations and stay at medical institutions if required.

In addition, the TMG has established "Recuperation Facilities during the Spread of Infection" which basically accept patients who are asymptomatic but may infect their family members. In these facilities, nurses conduct regular health observations using LINE messaging, spaces which allow teleworking are provided, and there are training rooms where people can exercise.

Provision of Medical Materials and Equipment

For medical institutions, public health centers, and fire departments, etc., the TMG distributes personal protective equipment that is being stockpiled, and implements the distribution arrangement of the medical resources provided by the Japanese government.

Dissemination of Patient Information and Infection Situation

The TMG has established the "COVID-19 Patient Information Management Center" which understands and manages information including the patient infection occurrence and the hospital entry and discharge situation. The Center summarizes the information gathered by the metropolitan government from related institutions including hospitals, accommodation medical care facilities, etc., and creates a patient information management database.

In addition, items including the conditions of patients who tested positive for the infection, the numbers of tests implemented, and the positivity rate are disclosed daily on a specially established website.

Promotion of Vaccination

To support municipalities, which are the main bodies implementing inoculations, the TMG shares information with municipalities and related organizations, as well as providing support to the medical care institutions which administer individual vaccinations.

In addition, the TMG establishes large-scale vaccination venues in the metropolitan area whenever required.

Further, in order to respond quickly to after-effects occurring following vaccination, the TMG provides telephone consultation by nurses and public health nurses through the "Tokyo Metropolitan Consultation Center for COVID-19 Vaccination After-effects" and supports for primary care doctors through specialist medical care institutions that are able to respond to COVID-19

vaccination after-effects.

COVID-19 Vaccination Promotion Campaign Project

To boost the vaccination of metropolitan citizens, the TMG develops activities utilizing an application that is able to register the vaccination records, in addition to providing information including correct knowledge relating to vaccines through a specially established website.

Promotion of Research and Development of Preventive Vaccines for COVID-19, etc.

At the Tokyo Metropolitan Institute of Medical Science, we promote research and development of preventive vaccines that can respond to not only COVID-19, but also new coronaviruses that may emerge in the future.

Promotion of Treatment Using Neutralizing Antibody Drugs and Orally Administered Drugs

For metropolitan citizens who have contracted COVID-19 (and have been judged by a doctor to need treatment), the TMG promotes treatment using neutralizing antibody drugs and orally administered drugs to inhibit the worsening of the disease. For patients wishing to have neutralizing antibody drugs administered and patients wishing to receive more information about neutralizing antibody drugs, the TMG has established the "Tokyo Metropolitan Call Center for Neutralizing Antibody Drug Treatment" and conducts dosage adjustment. In addition, it develops a medical care institution and pharmacy system that enables the smooth provision of orally administered drugs.

Establishment and Operation of Oxygen and Medical Treatment Provision Stations

These stations accept patients who show mild to moderate symptoms. Facility-type stations are operated as temporary medical care facilities in which doctors and nurses are stationed 24 hours, conducting health observations and providing medical care such as treatment using oxygen administration and Neutralizing Antibody Drugs. The multi-functionality is also being increased such as by supporting patients requiring dialysis treatment. Hospital-type stations mainly provide medical treatment including oxygen administration to patients with moderate symptoms.

Infectious Diseases Control

The progress of internationalization raises the risk of outbreaks of new infectious diseases that have never before been experienced in Japan, and it is necessary to strengthen measures to properly cope with the threats of these infectious diseases. The TMG will promote the preparation and measures for infectious diseases control based on the "Tokyo Metropolitan Prevention Plan for Infectious Diseases" revised in March 2018.

Surveillance System on Outbreaks of Infectious Diseases

The TMG quickly collects and analyses information on infectious diseases incidence reported by medical institutions via the online system connecting public health centers, the TMG and the national authority. The TMG provides the results for residents and health-care professionals.

Medical Institutions Designated for Infectious Diseases

As hospitals accepting patients with Type 1 infectious diseases including Ebola (hemorrhagic) fever and Type 2 infectious diseases such as MERS, the TMG specifies four hospitals as medical institutions designated for Type 1 infectious diseases and 10 hospitals as medical institutions designated for Type 2

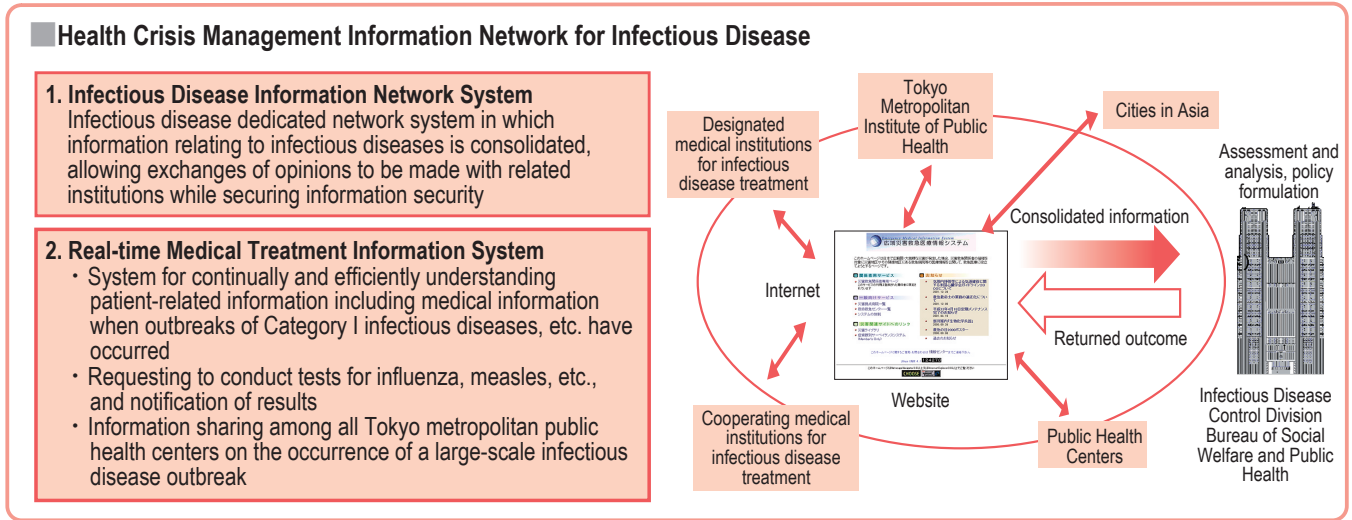
infectious diseases, respectively.

Public Funding of Medical Expenses

The TMG will bear the medical expenses for hospital stays by patients with Class-1 and Class-2 infectious diseases who received medical treatment at medical institutions designated for infectious diseases under a recommendation for hospitalization or measure based on law.

Health Crisis Management Information Network for Infection Disease

An information network composed of the TMG, public health centers in Tokyo, medical institution designated for infectious diseases and major cities in Asia will be established to rapidly share critical information, while taking appropriate measures to prevent the spread of infectious diseases based on collected information.



Measures against Infections via Mosquitoes

The increasing number of transportation options available increases the likelihood that disease factors may be carried into Japan from overseas, and the expansion of breeding areas for mosquitoes due to global warming also leads to fears that diseases such as Dengue Fever, Zika virus infection, etc. may be carried by mosquitoes. As such, facilities managers and residents are asked to supply the TMG with information that will assist with reducing the occurrence of mosquitoes, and in addition, surveys are being carried out into the state of mosquito breeding and the existence of viruses. In addition, the TMG improves examinations and medical care systems, and develops implementation systems to survey and exterminate mosquitoes, etc. in case of an outbreak.

Measures against Class 1 Infectious Diseases

The TMG strengthens measures to prepare for an outbreak by improving the transportation of patients to designated medical institutions for infectious diseases, as well as preparing infection protective gear for transport staff and designated medical institution staff, and implementing regular training.

Raising Awareness of Measures against Infectious Diseases among Tokyo Residents

The TMG distributes educational literature for overseas travelers and non-Japanese residents entering the country, and supports measures taken by corporations to ensure that appropriate training materials are made available.

It also ensures measures against infectious diseases are taken by staff at medical institutions.

Syndromic Surveillance of Ambulance Transport Data

Data is provided from the Tokyo Fire Department's emergency information analysis control system to quickly collect and analyze information about the symptoms of patients at the time of emergency transportation. The TMG is developing a system in which public health centers can use a mapping system to confirm the location of the occurrence, as well as any occurrence in other locations, and quickly provide information to medical institutions in case of an abnormal situation being detected upon receiving the analysis results.

