

(5) Securing Health and Medical Care Service Systems

The TMG has been striving in the improvement of emergency medical care and in-home medical care and establishment of local medical care system where residents can receive appropriate medical services for their symptoms and actively participate in their medical care, aiming at the realization of patient-oriented, safe and secure medical care that is available 365-days and 24-hours.

Current Status of Medical Facilities

In the Metropolitan Area, there are medical facilities of various sizes and capacities, ranging from the best university hospitals in Japan, which offer cutting-edge medical care, to community-based clinics providing close-to-home care.

■ Number of Medical Facilities (Oct. 1, 2017)		(Actual numbers)			Rate (per 100,000 people)		
		Nationwide	Tokyo		Nationwide	Tokyo	
			Total	Wards		Total	Wards
	Number of hospitals (locations)	8,412	647	427	6.6	4.7	4.5
	Number of hospital beds (beds)	1,554,879	128,279	80,160	1,227.2	934.7	846.7
Breakdown	General beds (beds)	890,865	81,280	59,517	703.1	592.2	628.7
	Long term care beds (beds)	325,228	24,070	13,502	256.7	175.4	142.6
	Beds for mental patients (beds)	331,700	22,279	6,874	261.8	162.3	72.6
	Tuberculosis beds (beds)	5,210	505	168	4.1	3.7	1.8
	Infectious disease beds (beds)	1,876	145	99	1.5	1.1	1
	Number of general clinics (locations)	101,471	13,257	10,181	80.1	96.6	107.5
	Number of dental clinics (locations)	68,609	10,632	8,288	54.1	77.5	87.5
	Average number of out-patients per day (persons)	1,346,627	141,771	108,349	1,062.8	1,033	1,144.5
	Average number of in-patients per day (persons)	1,252,295	102,591	62,510	988.3	747.5	660.3
	Bed occupancy rate (%)	80.4	80	78			

Source: Ministry of Health, Labour and Welfare
2016 Survey on Medical Institutions and 2016 Report on Hospitals

Tokyo Metropolitan Health and Medical Care Plan

The “Tokyo Metropolitan Health and Medical Care Plan” (revised in March 2018) (covering the period between FY2018 and FY2023), has been defined as a basic and integrated plan that clarifies TMG’s plans regarding medical care.

This Plan, in order to maintain and develop the medical service system in Tokyo for a time when baby-boomers reach the later stages of old age in 2025, contains specific measures for implementing the concept of the Plan integrating the “Tokyo Regional Medical Plan,” which was formulated in July 2016. (Medical policy Section, Medical Policy Division, Bureau of Social Welfare and Public Health)

Basic Points and Principles of the Plan

Under the Tokyo Regional Medical Plan, four basic objectives to ensure that “everyone can continue to receive high-quality medical care and enjoy life in Tokyo with peace of mind, which is the “Grand design of the medical plan for the year 2025 in Tokyo”, have been set forth.

The Tokyo Metropolitan Health and Medical Care Plan aims to achieve and promote specific measures for implementing the concept of the Tokyo Regional Medical Plan.

Tokyo where everyone can receive high-quality medical care and enjoy life with peace of mind

Four basic objectives

- I A structure to provide advanced and innovative medical care, which continues to develop in the future
- II Creation of a medical partnership system that seamlessly makes use of Tokyo's resources
- III Improved medical care that both offers cures and supports patients using a regional, comprehensive care system
- IV Acquisition and training of human resources to build the peaceful place Tokyo, where everyone can enjoy life

■ Health Care Zones

In order to carry out effective health and medical care policies, the TMG has set up primary, secondary and tertiary health care zones as geographical units to allocate health and medical care resources appropriately.

Primary	Basic zones for providing community-based health and medical care services (= Municipalities)
Secondary	Units where comprehensive health and medical care services are provided to all Tokyo residents in which appropriate number of hospital beds are secured for medical care for inpatients other than those who require special medical care services (criteria for calculating the number of necessary hospital beds for inpatients requiring long-term treatment and for general inpatients). In these zones, a functional coordination among medical institutions and with expert health care service providers
Tertiary	Special medical care services in these zones. Health and medical services for all Tokyo residents are also secured (throughout the entire Tokyo area)

Three Pillars of the Plan and Promotional Bodies

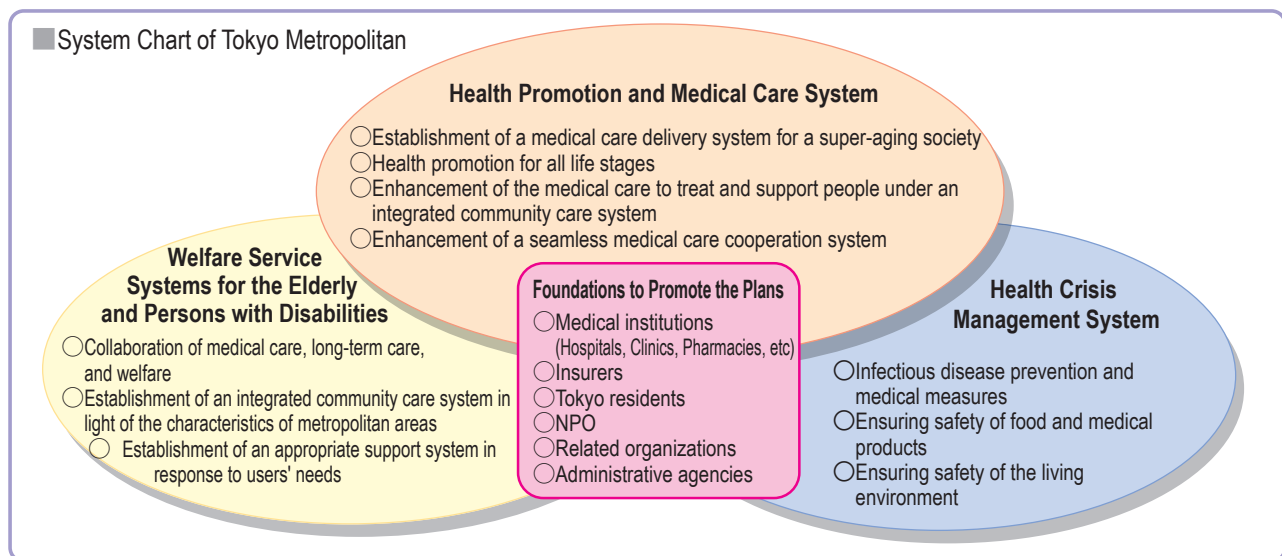
To achieve a high-quality, safe, and secure health and medical care system, the TMG provides health and medical information from the perspective of Tokyo residents. In addition, medical institutions, administrative agencies, and Tokyo residents, as bodies promoting the Plan, play their respective roles to promote health throughout all life stages and to secure a seamless medical collaboration system from acute stage and recovery stage to home care.

Furthermore, the TMG is enhancing the system where two elements mutually support each other: the provision of consistent services in the areas of health, medical care, and welfare, and the system to protect Tokyo residents from health crises.

System for Promoting the Plan

The progress of the Plan and benchmarks are evaluated and examined by councils established for each disease and project. Status is evaluated and examined on a regular basis by the “Tokyo Metropolitan Health and Medical Care Plan Promotion Council”, comprising medical care service providers such as doctors and nurses, medical care service receivers, and academic experts.

Furthermore, promoting the differentiation in facility functionality and collaboration and in-home medical care is discussed by the “Coordination Committee for Regional Medical Care Plan”, comprising regional medical institutions, related medical organizations, insurers, municipalities, etc.



Provision of Medical Information

The TMG provides information about medical institutions and provide support in which active provision of information by medical institutions is promoted so that the residents (patients) have sufficient information to identify desired medical service.

Tokyo Metropolitan Health and Medical Information Center

The Tokyo Metropolitan Health and Medical Information Center has been established as a general center to handle consultations on medical issues and

provide information about medical institutions.

○ Counseling on Health, Medical Care and Welfare Affairs

Expert counselors offer advice to or consult with residents of Tokyo.

○ Tokyo Medical Institution Information Service “HIMAWARI”

In line with the Medical Practices Information Provision Program, the information received from medical institutions in Tokyo is disclosed on the Internet.

Medical institutions near your home or workplace are searchable by specifying a location on this Website, along with a substantial amount of detailed information such as available departments, operation hours, access, available medical and diagnostic equipment, available tests, etc.

【Website】 <http://www.himawari.metro.tokyo.jp/>

【Mobile Site】 <http://www.himawari.metro.tokyo.jp/kt/>

○ Medical Information Service in Foreign Languages

(Available languages: English, Chinese, Korean, Thai and Spanish)

Counselors offer non-Japanese residents information on medical institutions where medical services in foreign languages are available.

【Phone】 03-5285-8181 (9 a.m. to 8 p.m. everyday)

Medical Information Navigation for Reassurance in Everyday Life

Information is provided through pamphlets and the website to ensure correct understanding on how to receive emergency care and consultation services, along with details on medical costs for hospitalization, and proper use of medical institutions.

Tokyo Children's Medical Care Guide

The Tokyo Children's Medical Care Guide is a website that provides basic knowledge on illnesses and how to treat injuries for children between ages 0 to 5.

Medical Care for International Patients

In order to cope with an increasing number of international patients, the TMG supports medical institutions that make efforts to enhance the system for accepting international patients. In addition, the TMG strives to provide medical information to international patients effectively and aims to establish a system that helps them see doctors in response to their symptoms without feeling anxiety.

Support for Medical Institutions

In order to promote coordination of the system for accepting international patients at medical institutions, the TMG supports hospitals that make efforts to acquire certification, "JIMIP (Japan Medical Service Accreditation for International Patients)" and medical institutions that prepare brochures for international patients and materials provided in the institutions in multiple languages. The TMG also provides training for medical institutions on how to respond to international patients and a telephone interpreting service for emergencies.

○ Emergency Interpretation Service for Medical Institutions

(Available in English, Chinese, Korean, Thai, Spanish, and French)

A telephone interpreting service is offered to registered medical institutions that have patients in an emergency condition and cannot implement the appropriate treatment due to their insufficient Japanese skills.

English/Chinese

Weekdays from 5:00 p.m. to 9:00 a.m. (next morning)

Holidays, etc. from 9:00 a.m. to 9:00 a.m. (next morning)

Korean/Thai/Spanish/French

Weekdays from 5:00 p.m. to 8:00 p.m.

Holidays, etc. from 9:00 a.m. to 8:00 p.m.

Establishment of a System which Help International Patients See Doctors in Response to their Symptoms without Anxiety

The TMG will establish a system to help international patients see doctors without anxiety by organizing meetings to strengthen the collaboration of related agencies such as administrations, medical institutions, related organizations, and accommodation facilities and by collaborating with regional medical institutions and related agencies.

Improvement of Health and Medical Care Service Systems in the Community

With the increasing and diversified demand for medical care services, the TMG has been addressing the establishment of a medical service provision system in communities by supplementing and maintaining medical services running short in local areas in quantity, quality and function.

Promotion of Medical Care Cooperation System by Disease

There are many life style related disease patients with high mortality, such as cancer and strokes, and they require detailed attention covering emergency medical care through to welfare services depending on the course of the symptoms.

○ Establishment of Medical Cooperation System for Stroke

The TMG aims to secure a system in which a patient who has a stroke is quickly and appropriately transported to a medical institution handling acute patients, and once the patient is out of the acute period, to establish a system to provide seamless medical and nursing care services in the community from treatment, and recovery to home rehabilitation.

○ Establishment of Medical Cooperation System for Diabetes

The TMG is promoting consistent measures against diabetes, from prevention to treatment, through developing medical institutions which are capable of delivering specialized medical treatment for diabetes, working to prevent complications, and building cooperation in medical care between hospitals and clinics in the community.

Rehabilitation System

The TMG supports the rehabilitation system in communities through training for rehabilitation workers at regional rehabilitation support centers (designated in each secondary health care zone) as well as the establishment of Tokyo Metropolitan

Rehabilitation Hospital, which plays a central role in rehabilitation provision. It will also support efforts to secure rehabilitation wards for convalescing patients.

Promotion of the Development of Artificial Neuronal Connections

The Tokyo Metropolitan Institute of Medical Science conducts clinical research in order to newly develop ways to connect nerves and methods of stimulation which match disease states utilizing uniquely developed “artificial neuronal connections (ANC)” in an aim to recover the physical functions of spinal cord injury patients and stroke patients.

Dental Health Care

The TMG has set up its own dental health objective, “Good Teeth Tokyo (Ii-ha Tokyo)”, under the Tokyo Metropolitan Dental Health Promotion Plan, which portrays ideal images of Tokyo residents. It sets forth a slogan for Tokyo residents: “enjoy meals and live your lives with smiles on your faces as long as you can.” While promoting Tokyo residents’ self-help efforts, it promotes dental health care for Tokyo residents in cooperation with municipalities, etc. It has also established the Tokyo Metropolitan Center for Oral Health for Persons with Disabilities to provide dental examinations to children (persons) with intellectual or physical disabilities. Further, to promote in-home dental treatment, the TMG is training dental care staff and long-term care staff, and is providing subsidies, etc. for use in preparing the medical equipment, etc. required for in-home dental treatment.

Enhancing In-home Medical Assistance Systems

Designed to accommodate a rapidly aging society, these systems offer an in-home medical care environment ensuring that all people can live in their communities in safety and with peace of mind, even when they need medical and nursing care.

Ensuring an At-home Medical Care Environment in the Community Partially New

In order to promote cooperation between medical care and long-term care in the community, the TMG is providing support according to the actual situations in municipality communities, such as by established an in-home medical care support desk, developing a 24-hour medical care system, securing backup beds at hospitals, and sharing information between medical care and long-term care staff. Further, by building a portal site that can be used by medical care and long-term care staff, the TMG is promoting the sharing of patient information utilizing ICT to facilitate wide-ranging cooperation between medical care and long-term care staff.

Train and Secure Human Resources engaged in in-home Medical Care

- Training for Human Resources engaged in In-home Medical Care

The TMG conducts training of in-home medical care leaders who play key roles in promoting in-home medical care in the community.

- Initiatives to Promote Entry into In-home Medical Care

For doctors at clinics who have not started an in-home medical care service, the TMG organizes seminars on in-home medical care to promote their entry. In addition, it trains and secures personnel who provide in-home medical care services for children by providing training to in-home medical care doctors and other pediatric care professionals.

Promoting a Smooth Transition to Life with In-home Medical Care

The TMG promotes activities of medical institutions that assist with hospital admissions and discharges, in order to develop an environment where inpatients can transition to a life with in-home medical care without feeling anxiety. It also further promotes collaborations and information sharing among medical institutions to which patients are admitted and regional medical and long-term care staff from (before) the time of admission. In addition, it promotes mutual understanding among medical institutions to which patients are admitted and regional medical and long-term care staff.

Measures against Cancer

Tokyo Metropolitan Plan to Promote Cancer Control Programs

The “Tokyo Metropolitan Plan to Promote Cancer Control Programs”, which is a comprehensive plan to counteract cancer, was formulated in March 2018 to cover the period FY2018 to FY2023. The plan forecasts the accelerated aging of Tokyo residents and the diversified needs of cancer patients, and therefore calls for further enhancement and strengthening of cancer control measures. Furthermore, it addresses new challenges such as establishment of a system of medical care services and consultation support services in response to each life stage including AYA generation.

Coordination of Structures to Deliver Cancer Treatment Partially New

In order to provide high-level cancer treatment to all residents, the TMG accredits hospitals with cancer treatment skills as high-level as the ones designated by the national government as “Cooperating Cancer Treatment Hospitals” and “Regional Cancer Treatment Hospitals”, as “Tokyo-designated Cancer Treatment Hospitals”, and hospitals capable of cancer treatment for specific parts of the body at levels as high as the national hospital, designated as “Tokyo Cancer Treatment Cooperation Hospitals”. This comprehensively addresses specialized treatment, palliative care, medical collaboration, etc.

The TMG is also training healthcare providers about palliative care to establish a system that provides seamless palliative care, wherever patients live, from

Tokyo residents including cancer patients will learn about cancer and aim to overcome it.

Objective 1. Enhance measures for the prevention and early detection of cancer based on scientific evidences

○Measures for prevention and early detection

- Promote efforts to improve the diets and lifestyles related to physical activities in order to reduce the risk of cancer based on scientific evidence
- Strengthen efforts to prevent people including those who are underage from smoking and secondhand smoking
- Promote prevention of cancer caused by infectious diseases
- Raise the cancer screening rate and support for municipalities and workplaces to raise the cancer screening rate
- Conduct cancer screening based on scientific evidences and improve its quality

Objective 2. Aim for patient-oriented medical treatment of cancer

- Provide cancer treatment in light of the "total care" for patients and their families, which provides holistic support at all stages from diagnosis and treatment, to follow-up
- Enhance the system to provide multidisciplinary cancer treatment and improve the level of regional medical care for cancer
- Provide medical care for cancer in response to each life stage
- Provide seamless palliative care from the time a patient is diagnosed as having a cancer
- Promote new discoveries in cancer treatment, cancer research, and cancer registry

Objective 3. Aim for the establishment of communities where all Tokyo residents can live together with peace of mind and respect

- Enhance consultation support systems in response to a variety of needs
- Enhance support in response to each life stage
- Promote an accurate understanding of cancer

the early stages of treatment to medical care at home. Furthermore, the TMG will conduct survey on medical institutions in Tokyo to improve the palliative care.

Promotion of Cooperation in the Treatment of Pediatric Cancer Partially New

To improve the medical level at which patients with rare childhood cancers are treated, a treatment network of medical institutions in Tokyo treating childhood cancer is being coordinated, in order to strengthen cooperation in treatment and improve consultation and support systems. Further, the TMG will conduct training targeting regional doctors, etc. to realize the early detection of cancer and the provision of appropriate palliative care.

Establishment of a System to Provide Medical Services for Cancer Patients of the AYA GenerationPartially New

The TMG establishes model businesses to provide cooperation in medical care and consultation support in order to develop an appropriate medical delivery system for cancer patients of the AYA generation in Tokyo.

(*) AYA generation stands for Adolescent and Young Adult generation, and mainly refers to those between the ages of 15 and 40.

Promotion for Achieving a Balance between Cancer Treatment and Work Partially New

The TMG establishes model businesses which provide treatment including outpatient chemotherapy on weekday evenings and at weekends in medical institutions to support cancer patients coping with both treatment and work.

Promotion of Cancer Research

The Tokyo Metropolitan Institute of Medical Science promotes the development of diagnosis methods of the next generation and curative medicine in collaboration

with municipal hospitals and medical institutions in Tokyo.

Tokyo Metropolitan Portal Site of Cancer

"Tokyo Metropolitan Portal Site of Cancer" that provides various information on cancer has been launched.

Enhancement of Emergency Medical Care

The TMG is striving to create an emergency medical care system from initial through to secondary and tertiary care, which provides appropriate medical care promptly at anytime, anyplace, and for all patients in response to each symptom.

Primary Emergency Care: Treatment for patients who do not require hospital admission

Secondary Emergency Care: Treatment for moderately sick patients who require hospital admission

Tertiary Emergency Care: Treatment for patients in critical condition, whose life may be at stake

Weekend/Holiday/Nighttime Treatment Program

In order to be able to treat patients who require hospitalization (for both surgery and internal medicine) on a 24-hour, 365-day basis, the TMG guarantees access to hospital beds for emergency admissions on holidays and at night.

Program to Improve Emergency Transportation and Patient Admission

In order to reduce the number of cases in which hospitals are unable to admit patients transported under emergency conditions, the TMG has ensured that staff other than doctors and nurses are in place to handle coordination (Emergency Medical Technician) and are improving our admissions systems.

Coordination of Transportation for Transfer between Hospitals

When patients are transported from other hospitals, they often use hospital ambulances or transportation service providers for patients, etc. depending on the level of care that they require. The TMG promotes the appropriate use of ambulances by partially subsidizing these costs. We encourage the use of a guideline created in cooperation with related facilities for handling emergency care at a home for the elderly, in order to ensure that transportation to a medical facility is handled smoothly.

Tokyo Children's Emergency Center

There four facilities designated as Tokyo Children's Emergency Centers, including the Children's Medical Center, as centers that must always accept and provide prompt and appropriate lifesaving treatment, in case of a request to accept a severe emergency pediatric patient under the Children's Emergency Transportation System for patients that are difficult to continue receiving emergency treatment at other medical institutions. The Centers provides lifesaving treatment, while working as a base for medical care coordination and cooperate with other medical facilities to ensure smooth transfers between hospitals, and also conduct clinical education and training to support hospitals in the area.

(Pediatric) Nighttime and Holidays Medical Service Project

During afternoons on holidays and nighttime every day, the TMG ensures availability of emergency hospitals 365 days a year, mainly for emergency pediatric patients requiring hospital treatment. In addition, at hospitals experiencing a concentration of patients including those with mild symptoms, nurses who can conduct triage are assigned to distinguish patients with higher urgency.

Tokyo Pediatric Medical Care Committee

The TMG is securing and enhancing the pediatric emergency medical care system from initial to tertiary emergency care by establishing a committee comprised of medical institutions, related organizations, and municipalities.

Regional Pediatric Care Training Project

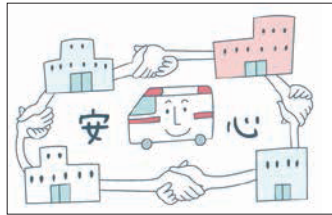
The TMG aims to improve the standards of emergency pediatric care in regions by creating opportunities for doctors, etc. from clinics and designated secondary emergency medical institutions (pediatrics) in Tokyo to participate in specialist training courses, and by securing the human resources for providing emergency pediatric care in the regions.

Tokyo Rules for Emergency Medical Care

To provide prompt and appropriate emergency medical attention, the TMG is promoting efforts under the "Tokyo Rules for Emergency Medical Care", comprised of rules on "Prompt admittance of emergency patients", "Conducting Triage" and "Tokyo Resident's Understanding and Participation".

○ Rule 1: Prompt Admittance of Emergency Patients

A system to promptly admit emergency patients will be developed through coordination with emergency hospitals and related organizations, by developing the "Regional Emergency Medical Care Centers" playing the key role of regional emergency care, and by assigning "Emergency Patient Coordinators" at the Tokyo Fire Department to coordinate the admittance of emergency patients across Tokyo.



Regional Emergency Medical Care Centers

These are medical institutions which coordinate admittance of emergency patients when an emergency medical team is not able to find a medical institution to admit in selection process based on the collaboration system among emergency medical institutions of the region along with the emergency medical team.

Emergency Patient Coordinators

When admittance is difficult in the region through the coordination of a regional emergency medical care center, they coordinate the admittance across Tokyo.

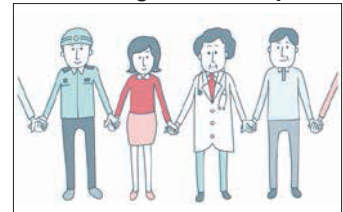
○ Rule 2: Conduct "Triage"

To protect the lives of patients who require immediate medical attention, "triage" to determine the necessity or order of clinical examination will be conducted in various situations in emergency care.

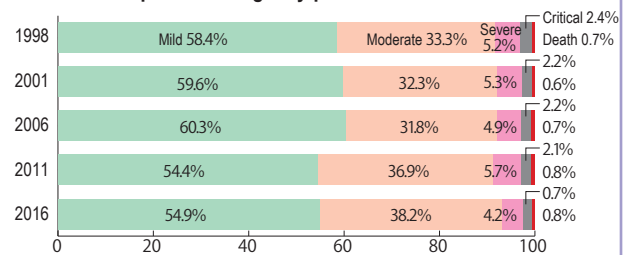


○ Rule 3: Residents' Understanding and Participation

In order to protect the emergency medical care system that is an important social resource, the Tokyo residents will try to use the system appropriately.



■ Ratio of transported emergency patient's level at the initial visit



Source: Tokyo Fire Department

Enhancement of Perinatal Medical Care

The TMG ensures comprehensive perinatal medical care system to provide efficient care in communities corresponding to various risks during pregnancy, labor and neonatal so that people can give birth to and raise children with peace of mind.

Securing the Functions of Perinatal Medical Care Center

The TMG will support the management of the perinatal medical care centers that have NICU (neonatal intensive care unit) and ability to respond appropriately in emergency situations for the pregnant women or women in labor with high risk and newborn babies and will strengthen its function.

Subsidy for Maintenance Expenses of Perinatal Medical Facilities

The TMG will support the maintenance of facilities and equipment of perinatal medical care centers to enhance the perinatal medical care system.

Operation of Comprehensive Perinatal Medical Center for Mother

The TMG designates the “Comprehensive Perinatal Medical Center for Mother (so-called “Super Comprehensive Perinatal Center”) at perinatal medical centers, which cooperates with doctors in emergency department and provides life-saving measures and always accepts the transfer request for pregnant women in severe condition.

Coordinator for the Transfer of Perinatal Patients

The TMG allocates coordinators who mainly make adjustments for the transfer of patients between communities under the jurisdiction of the Comprehensive Perinatal Medical Center to facilitate a prompt transfer of mother and child who require immediate medical attention.

Securing of Cooperating Perinatal Hospital (Operating on Weekends, Holidays and Night Hours)

The TMG designates “Cooperating Perinatal Hospitals” as an emergency medical institution that can address pregnant women or women in labor with medium risks while also supporting facility improvements to ensure emergency medical care for pregnant women or women in labor on weekends, holidays and night hours.

It also supports establishment of NICU at Cooperating Perinatal Hospitals.

Establishment of Perinatal Network Group

By establishing perinatal network groups which consist of initial, secondary, and tertiary perinatal medical institutions centering on Perinatal Mother-Child Medical Centers, the TMG strengthens the cooperation system and role-sharing function of perinatal medical care facilities and creates a framework to provide medical care according to the types of risks of pregnant women (fetuses) and infants.

Securing Cooperating Neonatal Hospital in Tama

In the Tama area with less perinatal medical care centers compared to other areas, the “Tama Cooperating Neonatal Hospital” will be secured for high-risk newborn babies, to strengthen the admittance system of newborns in Tama.

Training for Transition to In-home Care for Pediatric Patients

To ensure a smooth transition from Perinatal Mother-Child Medical Centers, etc. to home care, etc., this project provides training for different types of jobs, including doctors, nurses, physical therapists, MSW and nurses.

Program to Provide Hospital Beds that Support Discharge to Home Care

For children hospitalized for long periods at NICU, interim beds will be set up before transferring to long-term home care in order to support and to promote a smooth discharge from NICU to home, while also improving the situation of beds being fully occupied at NICU and other facilities.

Support for Transfer to Home Care of Pediatric Patients in NICU, etc.

The TMG subsidizes the costs required for attending training that requires overnight stays and the discharge coordination meetings conducted by Perinatal Mother-Child Medical Centers and visiting nurse stations, etc. in an aim to provide full support for the smooth transition of pediatric patients in NICU, etc. to home-based medical care.

Support for Training of Neonatal Doctors

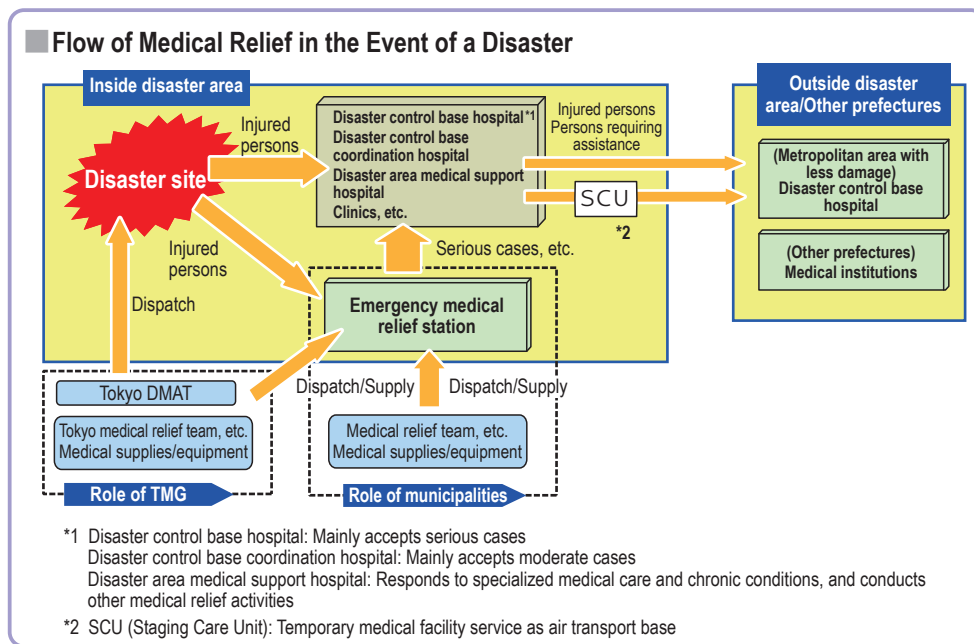
Subsidies are provided for medical institutions that pay allowances to trainee doctors who choose pediatrics in specialized training after completing clinical training and who will be in charge of neonatal medical care in a NICU, etc., with the aim of training doctors who will work in a NICU and other neonatal medical care facilities in the future.

Enhancement of Disaster Medical Care

Bracing ourselves for a massive earthquake, the TMG has established a system in which accurate information is gathered and swift and appropriate medical relief actions are taken.

Medical Relief Actions and Medical Supplies Stocks in Case of Disaster

In the “Tokyo Metropolitan Disaster Prevention Program”, various emergency measures in case of disaster are stipulated, such as the collection and centralization of medical information, primary medical care systems, patient transportation system for injured persons, etc. Municipal governments are responsible for the dispatch of relief parties to emergency shelters and stocking medical supplies. TMG is responsible for the dispatch of Tokyo DMAT and Tokyo medical relief teams, as well as the provision of medical equipment to be supplied to backup medical facilities.



Improvement of Disaster Control Base Hospitals

The TMG maintains “Metropolitan Disaster Control Base Hospitals” to accept mainly severely injured patients in case of a disaster and organize medical relief parties. It also prepares medical supplies and equipment.

Promotion of Earthquake-resistant Medical Facilities

The TMG provides financial assistance for hospitals in Tokyo to evaluate seismic capacity, newly construct/reconstruct, and conduct anti-seismic reinforcement constructions, aiming to further facilitate the earthquake-resistance repair of medical facilities to ensure medical practice in times of disaster.

Enhancing the Work of Tokyo DMAT (Disaster Medical Assistance Team)

The DMAT (Disaster Medical Assistance Team) is a medical team consisting of doctors and nurses who have received specialist training for implementing emergency rescue services in natural disasters including large earthquakes and at metropolitan area disaster sites such as large-scale traffic accidents.

In order to enhance and strengthen the initial medical response system, certain hospitals, mainly those with Emergency Critical Care Centers, have been designated part of Tokyo DMAT.

In addition, vehicles loaded with foodstuffs, daily foods, communications equipment, etc., are stationed at all Tokyo DMAT-designated hospitals. Furthermore, in order to save sick and injured people and secure safe activities of Tokyo DMAT in the case of a Nuclear, Biological, or Chemical (NBC) disaster, it has designated an NBC special disaster response team.

Disaster Area Medical Associations

Relevant parties collaborate over the period spanning the immediate aftermath of a disaster over the medium to long term. This project defines associations comprised of medical-related parties,

the police, firefighters, the Self-Defense forces, and the municipalities, to create a disaster-response medical system where relevant parties can collaborate effectively.

Regional Disaster Medical Collaboration Council

Under this project, a Regional Disaster Medical Collaboration Council is put together by medical-affiliated parties and the municipalities, in every Secondary Health Maintenance Medical block. The Council meets to consider specific policies in times of disaster, in accordance with the specific regional characteristics including specific medical care circumstances.

Positioning of Disaster Area Medical Care Coordinator

In order to ensure that necessary medical care is carried out quickly and appropriately in times of disaster, the Metropolitan Government has set up its own Disaster Medical Care Coordinator units, which are located in each of the Metropolitan Area and the Secondary Health Maintenance Blocks, to ensure smooth implementation and coordination of medical care throughout the Area.

Improvement of Measures regarding Medical Care in Remote Areas

This project implements medical care in remote areas such as isolated islands and mountain villages.

Tokyo Metropolitan Support Organization for Medical Care in Remote Areas

To ensure smooth and efficient implementation of the medical measures for remote areas, the Tokyo Metropolitan Support Organization for Medical Care in Remote Areas has been established to plan and make adjustments in programs. In addition, the Tokyo Remote Areas Health and Medical Care Affairs

Committee, comprised of municipalities in remote areas, relevant medical institutions, academic experts, and other members, is set up within the organization to facilitate general exchange of opinions and coordinate medical care in remote areas.

Support to Secure Healthcare Professionals

The TMG works toward ensuring a stable supply of doctors and other medical staff by dispatching doctors graduating from Jichi Medical University and doctors or dentists belonging to university hospitals and other hospitals cooperating in programs, based on the request of municipalities in remote areas, and by also providing a subsidy to municipalities in remote areas for expenses required to hire doctors and other medical staff.

The TMG has also established a facility to offer free job placement services for various medical professions and to dispatch substitute doctors, and it partially subsidizes the cost of on-site tours for medical staff organized by towns and villages of islands, in order to support municipalities in remote areas that face difficulties in securing healthcare professionals.

Support for Medical Treatment

If an emergency patient, who cannot be treated at a medical institution at an island location, presents for treatment, the TMG has a system in place 24 hours a day/365 days a year to transport said patients to an advanced medical institution, with Tokyo Metropolitan Hiroo Hospital serving as the base hospital for the island areas, using the Tokyo Fire Department or Maritime Self-Defense Force helicopter, or other method. In addition, the patient transport system is enhanced by entering into cooperative agreements with private and national hospitals with rooftop heliports, who will also accept patients.

Furthermore, an electronic image transmission system is being utilized to support medical treatment linking medical institutions in island locations and Tokyo Metropolitan Hiroo Hospital to exchange information such as X-ray and CT images and allow island hospitals to receive advice from medical specialists while remaining in situ.

Moreover, the TMG coordinates the securing of medical specialists and subsidizes the expenses for providing specialized medical treatment such as for the eyes, ears, nose and throat conducted by municipalities in remote areas.

Development of a System to Provide Medical Care

In order for medical institutions in remote areas to secure a foundation for treatment, the TMG subsidizes the expenses required for maintenance of clinics and purchase of medical equipment.

Securing and Improvement of Medical Human Resources

This project seeks to ensure a steady flow and improvements in quality of medical care professionals—individuals capable of providing quality services, from the perspective of patients (Metropolitan area residents).

Measures for Securing Doctors

○ Tokyo Regional Health and Medical Care Affairs Committee

This committee, which is comprised of medical personnel and Tokyo residents, considers how to secure stable medical care human resources such as doctors.

○ Tokyo Regional Health Care Support Center

Based on the policy to secure doctors decided by the Tokyo Regional Health and Medical Care Affairs Committee, the Center promotes measures to secure doctors based on the characteristics of Tokyo, such as support for medical institutions to secure doctors, support for career development of persons who hold a scholarship loan, understanding of the actual situation of securing doctors, and sending of information on measures to secure doctors.

○ Tokyo Metropolitan Scholarship System for Regional Health Care Doctors

The TMG offers scholarship loans to medical faculty students in universities in Tokyo and providing educational assistance in cooperation with universities in an aim to secure sufficient numbers of doctors to work in pediatrics, perinatal, emergency medicine and remote area medical care.

○ Tokyo Metropolitan Project for Doctors Supporting Regional Health Care

The TMG secures health care systems in the Tama area and island areas by employing doctors as TMG employees to be dispatched to medical institutions in remote areas and public hospitals.

Measures to Ensure Sufficient Nursing Staff

○ Tokyo Nursing School

The TMG owns seven nursing schools to train nurses to work for medical institutions in Tokyo. In FY2017, the seven schools had 570 graduates, which account for 10% of the total number of graduates from nursing schools within Tokyo.

○ Subsidy for Costs of Operating Nursing Schools

The TMG subsidizes the costs required to operate nursing schools or training centers, in order to improve the quality of education provided and recruit nurses to make up the current shortfall in the metropolitan area.

○ Tokyo Nurse Plaza

To secure and improve the quality and retention rates in Tokyo, the TMG offers employment consultations, job placement, and reemployment training for public health nurses, midwives, nurses and licensed practical nurses.

○ Loan for Costs Relating to Nursing Training

Student resident within Tokyo, who are training as public health nurses, midwives, nurses or licensed practical nurses and who plan to work in nursing in Tokyo in the future, may access loans for the cost of their studies. This program aims to improve the retention and the quality of nurses in Tokyo.

○ Support Program to Promote the Retention of Nurses

The TMG supports activities of hospitals to secure nurses by assigning employment assistants to patrol and visit hospitals and by promoting group training based on secondary health care zones. The program aims to build a structure in which nurses can continue working free from care.

○ Maintenance of Training System for Newly-employed Nurses

To prevent early resignation of newly-employed nurses, the TMG encourages the enhancement of clinical training at hospitals.

○ Community Support to Secure Nurses in Regional Health Care

The TMG supports reemployment of nurses by offering training for and consultation on reemployment in communities.

○ Promotion of Opening and Training of Outpatient Nursing Consultations

To enhance home medical care and to improve the qualifications of the nursing staff, through coordination with doctors, the TMG supports the development of facilities and training for outpatient nursing consultations for its opening, which provides patients with guidance and care.

○ Training for Opening of Midwifery Centers/ Outpatient Midwifery Clinics in Hospitals

Training is offered for managers within medical facilities and midwives, in order to promote the opening of midwifery centers and outpatient midwifery clinics within hospitals, with the aim of ensuring a high quality of service is provided to metropolitan residents (patients), and retaining medical staff.

○ Promotion of Retention of Nurses in Island Areas

By making trips to island areas for training and dispatching short-term substitute nurses, improve the work environment and promote the retention of nurses working in island areas.

Measures to Retain Medical Staff

○ Tokyo Metropolitan Center to Support Improvement in Medical Work Environment

The Tokyo Metropolitan Center to Support Improvement in Medical Work Environment has been established as a base to promote better work environments for healthcare professionals. The center has built a consultation system by a team of experts on labor management and health service management, and supports initiatives by medical institutions to improve work environments.

○ Improving the Working Environment and Supporting Reemployment of Doctors and Nurses

The TMG improves the working environments of doctors and nurses working at hospitals, promotes reductions of turnover and retention, and supports the reemployment of doctors, etc. who have been away from work due to childbirth and child-rearing.

○ Improvement of the Quality of Medical Staff Members

Various workshops and lectures are conducted to address the advancing and diversifying health and medical services and improve the quality of medical staff members.

○ Designation and Guidance for Training Schools

Based on the national laws and regulations of training schools for medical care providers, the TMG provides approvals for designation or partial changes, and guidance. It also works as an intermediary with the national government, and provides requests for designation or partial changes for some training.

Ensuring Medical Safety

Medical safety measures are promoted by the TMG so that the quality of medical services is improved and all residents are provided with safe, secure and satisfying medical care.

Authorization, Inspection and Supervision of Medical Institutions

Based on the Medical Service Law, the TMG has the right to authorize founding of hospitals and medical corporations.

It also conducts on-site inspections to check whether the institution meets predefined criteria set by the Medical Service Law, such as number of medical employees and adequate facilities.

Medical Safety Support Center Project

The TMG supports the five Public Health Centers in Tama region, cities with health centers and Medical Safety Support Centers located in Special wards as well as consulting with residents regarding medical issues at "Patients' Voice Consultation Counter".

Medical Safety Support Center

Centers have been established in prefectural municipalities with cities establishing public health care centers and special wards in accordance with the Medical Care Law revised in April 2007. Centers 1) respond to requests for consultation and complaints regarding medical matters and advise medical institutions and residents; 2) provide information necessary to secure medical safety; 3) provide training on medical safety; and, 4) provide support necessary to secure medical safety in specified areas.

Postmortem Examination and Autopsy

The Tokyo Metropolitan Medical Examiner's Office in each ward conducts postmortem examinations and autopsies according to the Postmortem Examination and Corpse Preservation Act, to find out the cause in cases of unusual death, so as to improve maintenance of social order, prevention of disease, and promotion of public hygiene.

The operation is commissioned to doctors' associations and universities, etc., in the Tama and Island areas.

(6) Promotion of Health Policies

The TMG has emphasized the implementation of comprehensive regional health services from the viewpoint of a Tokyo resident, such as “Proactive health improvement for each Tokyo resident”, “Cancer prevention measures”, “Support for patients with intractable disease and atomic bomb survivors”, and “Comprehensive measures against suicide”.

The TMG also supports the sound management of the National Health Insurance System that serves as the foundation for the universal health insurance system and the Medical Care System for the Elderly Aged 75 and Older.

Public Health Centers/Municipal Health Centers

Public Health Centers are established for the purpose of contributing to the maintenance and improvement of residents’ health. Each Public Health Center engages in wide-ranging, technical and professional operations to improve the health of the community, while Municipal Health Centers provide health consultations and examinations to the residents of the area.

■ Bodies of Centers

Public Health Centers	Tokyo Metropolis	Tama region (excluding Hachioji City and Machida City), islands region
	Special wards	23 special wards
	Core cities and public health center ordinance-designated cities	Hachioji City, Machida City
Municipal Health Centers	Each municipality	

■ Operation of Tokyo Public Health Centers

Tokyo Public Health Centers are engaged in wide-ranging project adjustment of secondary health care zones under its jurisdiction, support for municipalities, as well as development of a health crisis management system.

Planning and coordination

- Planning and promotion of the “Regional Health Care Promotion Plan” and the “Regional Health Care Promotion Plans for Each Subject”
- Provision of advice and guidance to municipalities, and support for various training, business cooperation, and the “Comprehensive Public Health and Welfare Block Grant Program for Municipalities”
- Development of health crisis management systems such as for new strains of influenza, and coordination with related institutions
- Promotion of regional health and medical care cooperation
- Medical Safety Support Centers (Patients’ Voice Consultation Counters)
- Publicity and building of awareness related to health education, holding of various courses, various statistical investigations, etc.

Public health measures

- Building of public awareness to stop the spread and prevent infectious diseases such as tuberculosis and AIDS
- Responses and support for persons with mental disorders, and specialist consultation for patients and families
- Consultation on life with medical treatment and health guidance for intractable disease patients, children with disabilities and their families
- Prevention of lifestyle-related diseases such as cancer, diabetes, and periodontal disease, and support for health promotion
- Operation of infectious disease (tuberculosis) examination committees, air pollution certification committees, etc.

Living environment and safety measures

- Approval, monitoring and guidance for operating restaurants and food manufacturing companies, etc., and food poisoning countermeasures
- Approval, monitoring and guidance for operating hairdressers, beauty salons, dry cleaners, inns, etc., and water quality testing
- Indoor environmental health measures, measures for allergies, air pollution public health measures, measures for hay fever
- Measures for preventing drug abuse, and permission, monitoring and guidance for opening pharmacies, etc.
- Guidance for special food service providers, popularization of the display of nutritional facts, etc.

Promotion of Comprehensive Measures against Suicides

The issue of suicide shall not be considered as a personal problem, but as a social problem which is caused by various social factors and is preventable with the adequate support of society.

The TMG, by encouraging society as a whole to work on the issue, promotes Comprehensive Measures against Suicide to realize a city where everyone values life and where everyone can live with ease.

Tokyo Conference for Comprehensive Measures against Suicide

At the Tokyo Conference for Comprehensive Measures against Suicide, the TMG promotes comprehensive measures to prevent suicide in cooperation with related institutions, such as by gaining an understanding of the current situation of suicides in Tokyo, and evaluating and verifying policies based on the Tokyo Metropolitan Comprehensive Plans for Measures against Suicide which were formulated in June 2018.

Tokyo Metropolitan Regional Centers for Promoting Measures against Suicide

Tokyo Metropolitan Regional Centers for Promoting Measures against Suicide have been established with the aim of effectively promoting comprehensive measures to prevent suicide in line with the situation in various municipalities, and support for municipalities has been strengthened in this area.

Prevent Suicide! Tokyo Campaign

The campaign aimed to prevent suicides has been conducted in September and March to promote understanding about the status of suicides and to raise awareness of suicide issues and the need for the society as a whole to take measures.

Hotline to Provide Counseling to Suicidal Persons in Tokyo

“Kokoro-to-Inochi no Hotline (Minds and Lives Hotline)”

The TMG has set up a dedicated counseling hotline to provide counseling to suicidal persons, while coordinating with professional counseling organizations in various fields, and actively supports those in need of counseling.

Tokyo Metropolitan “Kokoro-to-Inochi no Support Net (Minds and Lives Support Network)”

The TMG has set up a consultation desk to prevent survivors of suicide attempts from attempting suicide again, by connecting survivors, who are transported to emergency medical institutions, or consultation and support organizations in the community, and who can continuously provide support.

Tokyo Network of Counseling and Support

Due to the various issues behind suicide, the TMG builds a network composed of related institutes and organizations to provide suicidal persons with appropriate consultation and support.

In addition, the TMG provides information via consultation desks, etc. as part of measures implemented to prevent suicides among the younger generation and support the families of suicide victims.

Furthermore, through workplace lectures, etc., it contributes to creating a working environment where people are not driven to suicide.

Consultation on Suicide Using SNS

In order to strengthen measures to prevent suicide among young people, the TMG provides consultation services on suicide using SNS.

Health Promotion

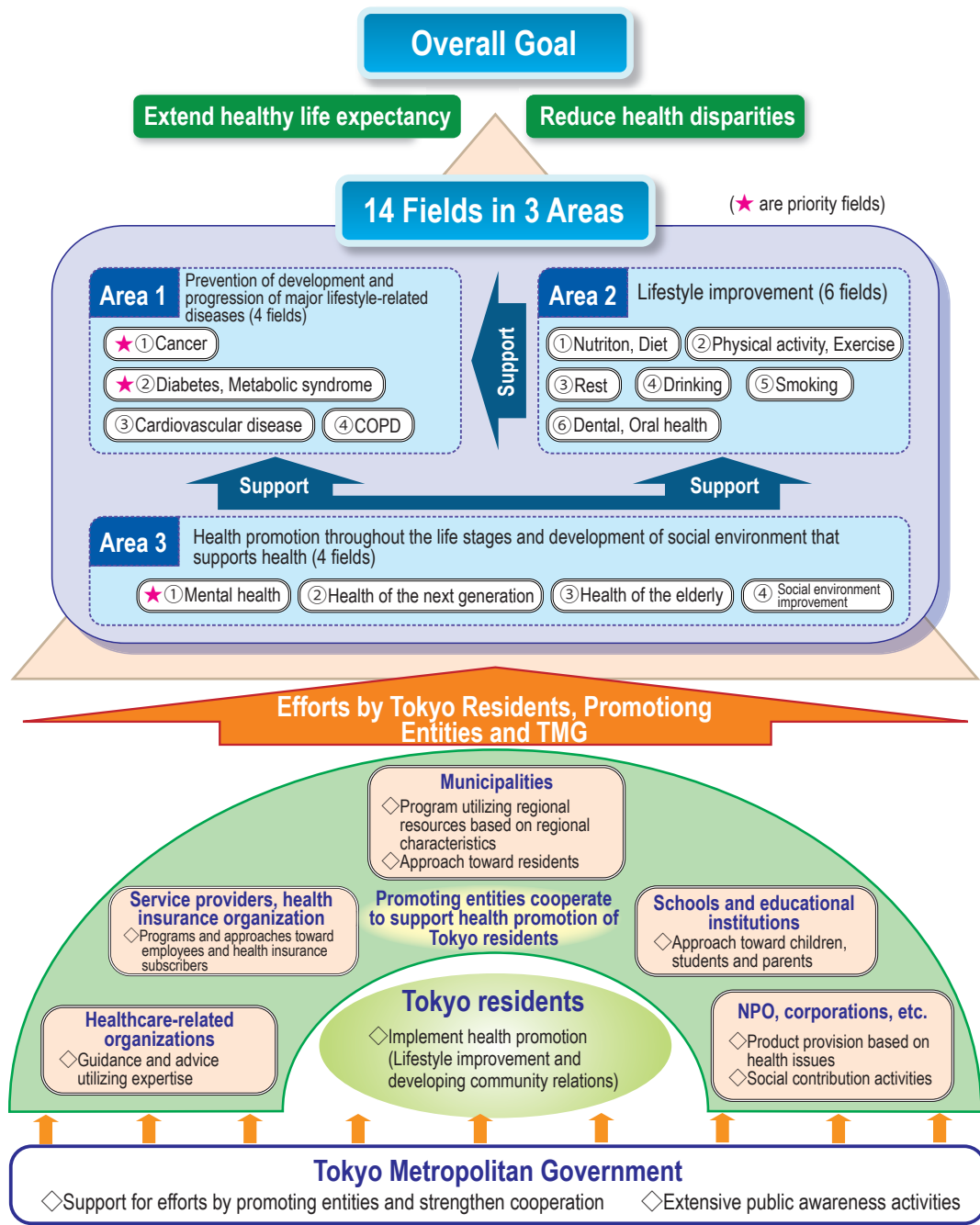
To realize a society where everyone can live healthily throughout their life, society as a whole will support and comprehensively promote health improvements that each Tokyo resident can adopt on their own initiative.



Promotion of “Tokyo Metropolitan Health Promotion Plan 21 (Phase 2)”

The “Tokyo Metropolitan Health Promotion Plan 21 (Phase 2)” was formulated in March 2013, with overall goals to “Extend healthy life expectancy” and “Reduce health disparities”. Goals were also outlined for 14 fields, including “Cancer”, “Diabetes and Metabolic Syndrome”, and “Mental health” as priority fields. In order to prevent the development and progression of lifestyle-related diseases and to improve lifestyles, TMG will promote higher awareness in a wider area, support the initiatives taken by municipalities, service providers and medical insurers, and strengthen their collaboration to promote better health for Tokyo residents.

Conceptual Diagram of Tokyo Metropolitan Health Promotion Plan 21 (Phase 2)



Prevention of Lifestyle Diseases Partially New

Through education on a healthy diet and physical activity (activity in daily life, exercise), using “Japanese Food Guide Spinning Top” and “2013 Physical Activity Standards and Guidelines for Better Health (Active Guide)”, and development of human resources on health promotion, the TMG promotes the prevention of lifestyle diseases such as diabetes.

○ **Diabetes Prevention Measures**

The TMG supports initiatives using videos to prevent diabetes by raising awareness and educating the metropolitan population about prevention. It also widely promotes the need to improve lifestyle habits, and the importance of early and continued treatment.

Additionally, the TMG supports activities to prevent the worsening of the disease by creating brochures, etc. conveying the actual situation of how the disease worsens and distributing them to persons requiring treatment, corporations, medical insurers, etc.

○ **Health Promotion through Facilities for Food Services and Restaurants**

The TMG provides guidance and advice to food service providers on nutrition management in accordance with the characteristics of individual facilities, thus promoting Tokyo residents’ health through food services. It also promotes initiatives to increase the number of restaurants with vegetable-based menus.

○ Personnel Development to Encourage Health Promotion

In order to promote the health-building plan for Tokyo residents, the TMG will foster personnel that can take on the role of promoting health improvements within municipalities and medical insurers.

○ Education of Health Promotion in Daily Life

In order to allow Tokyo residents to practically promote their own health without feeling burdened, the TMG prepares an environment that includes building public awareness of measures which are easily implemented in their daily lives such as increasing the number of paces that they walk and improving their lifestyle habits by moderating alcohol intake. The environment also includes a comprehensive portal site which gathers together walking maps that have been compiled by local governments in the Tokyo metropolitan area.



【Website】 <http://www.fukushihoken.metro.tokyo.jp/walkmap/en/index.html>

○ Program to Support Health Promotion Originating in Local Areas

The TMG is aiming to stimulate regional activities by giving awards and introducing activity examples such as groups which are implementing activities to promote health in regions.

○ Program to Develop the Dietary Environment of Elderly Persons

In order to extend the healthy life expectancy of elderly persons, the TMG builds public awareness to prevent undernourishment as one of the causes of frailty through cooperation with convenience store operators and holding lecture courses targeting business operators that deliver meals to elderly persons.

○ Program to Support Health Promotion at Work

This program promotes measures to encourage businesses to educate their employees at work in regards to health promotion and cancer prevention, in cooperation with economic organizations.

Prevention and Early Detection of Cancer

The “Tokyo Metropolitan Plan to Promote Cancer Control Programs (Phase 2 revision)” (period: FY2018-FY2023) was formulated in March 2018 as the comprehensive plan that covers from cancer prevention, treatment to higher quality of recuperation.

Together with the “Tokyo Metropolitan Health Promotion Plan 21 (Phase 2)”, the TMG will step up measures to prevent cancer.



(Image) Be good to yourself. Take a cancer screening test.

○ Program to Raise Cancer Screening Rate and Accuracy Control in the Community

The TMG strives to boost the rate of scientifically-based cancer screenings conducted by municipalities, while establishing a collaboration system with related agencies so that municipalities can understand detailed examination results. It also promotes improvements to the percentage of examinees who underwent detailed examination and ensures that those who have not undergone a detailed examination do so. Furthermore, lectures on accuracy control are also conducted for organizations commissioned for cancer screening.

○ Cancer Screening Campaign

To achieve early detection of cancer, the TMG, in cooperation with media and relevant organizations, promotes the campaign to increase the rate of residents receiving screening for highly-mortal cancers such as breast cancer or large intestine cancer.

○ Program to Promote Cancer Screening

In order to stimulate the momentum for cancer control measures including cancer screening among autonomous bodies and corporations, the TMG encourages municipalities and corporations to issue the “Declaration on Cancer Control”, in order to promote cancer control measures, and promotes voluntary actions of each body.

○ Development of Support System for Cancer Screening

The TMG will develop a support system for cancer screening by providing technical training for physicians and others engaged in giving breast cancer screenings via mammography and stomach cancer screening via gastrofiberscopy.

Measures against Harmful Health Effects of Tobacco (Cigarette) Partially New

○ Promotion of Passive Smoking Prevention Measures

The TMG builds public awareness regarding passive smoking prevention measures including the key points and details of the Tokyo Metropolitan Ordinance to Prevent Exposure to Second-Hand Smoke. Further, together with establishing a dedicated consultation desk to respond to inquiries relating to the new system, the TMG is dispatching advisors to business operators to give advice about the preparation of specialized smoking rooms. Additionally, in order to realize a city that everyone can be comfortable living in, the TMG is also supporting municipalities which are developing passive smoking prevention measures and establishing public smoking areas.



Tokyo Metropolitan Ordinance to Prevent Exposure to Second-Hand Smoke

■ Principles and Purpose

- To prevent the adverse health effects of passive smoking in advance to realize a city in which everyone can live comfortably

■ Key Points of Ordinance

- “People-focused” measures to protect “workers and children” from the effects of passive smoking
 -
- Regulation of the obligations of the TMG, metropolitan citizens, and guardians
- Regulation of passive smoking prevention measures according to the type of facility

[Type 1 facilities]

- Kindergartens, daycare centers, elementary, junior and senior high schools, etc.
 - Prohibition of smoking within the grounds (Not permitted to establish smoking areas outdoors)
- Universities, medical institutions, children’s welfare facilities, administrative agencies, etc.
 - Prohibition of smoking within the grounds (Permitted to establish special outdoor smoking areas)

[Type 2 facilities]

- Welfare facilities for the elderly, athletic facilities, hotels, offices, eating and drinking establishments, etc.
 - In principle, smoking is prohibited indoors (Possible to establish dedicated smoking rooms and designated tobacco specialized smoking rooms)

- * Existing small and medium-sized eating and drinking establishments which do not have employees can choose to have a smoking environment.

- Obligation to display stickers in restaurants, etc. (including non-smoking establishments)
- Regulation of administrative punishment and penalties regarding ordinance violations

■ Enforcement Dates

- January 1, 2019: Obligations of the TMG, metropolitan residents, and guardians
- On the days determined in the regulations during the period up to September 1, 2019
 - Prohibition of smoking on the grounds of schools, daycare centers, etc., obligation to display stickers in stores, etc.
- April 1, 2020: Overall enforcement

○ Building Public Awareness regarding the Adverse Effects of Smoking on Health

The TMG builds public awareness to prevent smoking by minors, such as by holding underage smoking prevention poster competitions and creating supplementary teaching materials at various levels for implementing smoking prohibition education in elementary schools, junior high schools and senior high schools.

○ Measures to Counteract COPD (Chronic Obstructive Pulmonary Disease)

A booth allowing people to test themselves and find their own “lung age” will be installed at various events etc. in order to educate people about COPD (Chronic Obstructive Pulmonary Disease), as well as the need to raise awareness, prevent onset, encourage early detection and ensure early treatment, and to develop an awareness of the further need to inform family members.

National and Local Cancer Registry

The TMG is registering information related to cancer patients in order to make estimates of the cancer incidence rate and survival rate. This enables the TMG to determine the actual state of affairs concerning cancer in Tokyo in the aim of evaluating and promoting cancer countermeasures.

Promotion of Mental Health

Adequate rest and coping with stress are important in maintaining mental health. Promotion and education on how to cope with stress, and creation of communities and workplaces where people can easily seek consultation are called for.

Support for Patients with Intractable Disease and Atomic-bomb Survivors

Since there is currently no effective cure established for intractable diseases, they require long-term treatment. The TMG supports, in cooperation with the Japanese government, patients with intractable diseases in the search for cures and the recuperation of the patients. It also provides support for atomic-bomb survivors and measures for viral hepatitis.

Subsidization of Medical Expenses

As subsidy for the medical expenses of intractable diseases, the TMG subsidizes a part of the self-pay burden of medical expenses and costs of long-term insurance services (only partial subsidization is available) for nationally designated diseases and other TMG designated diseases.

Subsidy for medical expenses is also provided to patients with renal insufficiency and require undergoing dialysis, such as patients with congenital blood coagulation factor disorder.

Temporarily Hospital Admission of Intractable Disease Patients living at Home

The TMG has beds at hospitals in Tokyo for patients with intractable disease normally living at home, in

case the care provider, such as a family member, becomes temporarily unavailable to provide nursing care due to illness or accident.

Home-visiting Nursing Care for Intractable Disease Patients Living at Home

A medical team comprised of expert physicians and home doctors offers consultations at the homes of patients who are bed-ridden or have difficulties receiving treatment.

Home-visiting Nursing Care for Intractable Disease Patients on an Artificial Respirator Living at Home

The TMG offers home-visiting nursing care outside the limit of the medical service fee for the patients living at home using artificial respirator.

Project to Install Emergency Power Sources for Intractable Disease Patients on an Artificial Respirator

To prepare for power shortages in case of a disaster, the TMG offers support to medical institutions using ventilator therapy, to secure emergency power systems that can be loaned without charge to intractable disease patients who live at home and use an artificial respirator.

Consultation on Home Care for Intractable Disease Patients

Public health nurses at public health centers make home visits, telephone, or meet patients at the health center to provide consultations about home care, so that patients can live comfortably at home.

Medical Network for Intractable Diseases

In order to provide a stable appropriate environment for patients with intractable diseases and their families, related organizations such as local hospitals, cooperating hospitals and public health centers, etc. are working together to secure a Medical Care Service System for Intractable Diseases.

Tokyo Metropolitan Intractable Disease Consultation/Support Center

The TMG offers support and consultation for intractable disease patients in communities and also promotes community exchange activities.

- (1) Tokyo Metropolitan Intractable Disease Consultation/Support Center
Contents: Medical care consultation, Employment consultation, Consultation events on medical care for intractable diseases, Lectures on medical care for intractable diseases
- (2) Tokyo Metropolitan Tama Consultation/Support Room for Intractable Diseases
Contents: Medical care consultation, Employment consultation
- (3) Tokyo Metropolitan Peer Consultation Room for Intractable Diseases
Contents: Peer consultation, Exchange meetings of patients and their families

Support for Atomic bomb Survivors

The TMG provides health checkups for atomic bomb survivors and their children, medical subsidization and health management benefits for atomic bomb survivors, and health guidance and medical expenses subsidization for the children of atomic bomb survivors.

Measures for Viral Hepatitis

The TMG conducts activities on the dissemination/education of correct information about viral hepatitis, while also supporting a system to conduct viral hepatitis screenings at Tokyo public health offices, municipalities and workplaces, and promoting the screenings.

The TMG is also improving the hepatitis treatment network, which links home doctors with medical institutions specializing in hepatology, and offers subsidies for medical expenses for interferon treatment, nucleic acid analog preparation treatment, and interferon-free treatment. It also offers subsidies for the costs of detailed examinations for those whose hepatitis virus inspection was positive and for patients being treated for chronic hepatitis and for a part of costs of hospitalization to treat the liver cancer and severe cirrhosis.

In addition, certain hospitals are designated as “Cooperating Hepatitis Treatment Hospitals”, and the Hepatitis Patient Counseling Center provides counseling to hepatitis patients.

Promotion of Liver Cirrhosis Therapeutic Drug Development New

The Tokyo Metropolitan Institute of Medical Science conducts basic research to clarify the mechanisms for recovering liver functions in order to promote the development of a liver cirrhosis therapeutic drug by administering the low molecular weight compound PRI-724, which is a therapeutic drug candidate, to human hepatocyte model mice, etc.

Improvement of Measures for Issues of Blood Supply and Organ Transplantation

Blood Supply programs are conducted to secure a stable supply of the necessary medical blood products. The TMG encourages residents’ understanding of organ transplantations and bone-marrow registrations. (Specific Disease Measures Section, Health Policy Division, Bureau of Social Welfare and Public Health)

Securing Safe Blood Supply

The TMG adopts educational activities and blood donor registration systems focused on people in their teens and twenties.

Appropriate Use of Blood Supply

The TMG formulates assessment guidelines for medical institutions to conduct self-assessments as well as offering lectures for relevant parties.

Measures for Organ/Bone-marrow Transplantation

The TMG distributes leaflets with donor cards to Tokyo residents, and stations Tokyo Organ Transplantation Coordinators for the purpose of dissemination of information and education to the medical institutions engaged in organ transplantation. The TMG also handles bone-marrow donor registrations, including those used in peripheral stem cell transplantation, at public health centers in Tokyo, especially during “bone-marrow donation promotion month”, to secure potential donors.

Medical Insurance

Medical insurance systems provide the necessary benefits for residents when they are ill or injured, so that everyone can maintain their own health and quality of life. There are three types of insurance in this system; Employees’ Health Insurance (EHI), offered to employees of companies and for their dependents, the National Health Insurance (NHI), offered to self-employed workers, residents, and their families, and the medical system for the elderly aged 75 and over, offered for people aged 75 and older (including people aged from 65 to under 75 with a permanent disability). All Japanese citizens are expected to join one of these systems.

A health insurance certificate is issued to all members. One can receive medical care at a reduced cost by presenting the certificate to a medical institution.

National Health Insurance

As Japan has a universal healthcare system, everyone must join the NHI unless they are insured by health insurance offered at their workplace.

The NHI insurer is either the prefectural/municipal government or a national health insurance society organized by those who are engaged in the same business or profession. The amount of the insurance premiums (taxes) depends on the insurer.

* Category 2 Individuals Insured under Long-Term Care Insurance must pay a Long-Term Care Insurance premium (tax), in addition to a premium (tax) for medical care and for support for the elderly.

* Please ask your municipality’s NHI management division or national health insurance society about the application and other procedures.

Employees’ Health Insurance

This type is mainly divided into two parts; Public-corporation-run health insurance, managed for employees of small and medium-sized businesses (operated by Japan Health Insurance Association, also known as “Kyokai Kenpo”) and Society-managed, employment-based health insurance, operated by associations of large companies or by unions of companies within the same profession. Premiums are determined multiplying monthly standard remuneration and the standard bonus (based on one’s salary) by the insurance rate, and are equally shared by the business owner and the insured person (Premiums differ for each prefectural branch of the Japan Health

Insurance Association and for each health insurance society).

Insurance benefit is provided for illness, injury, childbirth and death of the policyholder (for insured persons and their dependents).

Medical Care System for the Elderly Aged 75 and Over

This type is a system for persons aged 75 and older and for persons aged from 65 to under 75 with a permanent disability.

Tokyo Metropolitan Association of Medical Care Services for Older Senior Citizens (Tokyo Koki Koreisha Iryo Koiki Rengo), organized by all municipalities in Tokyo, is responsible for the management of determining the premium rate and of the medical benefit, whereas the municipalities are in charge of delivering health insurance certificates, collecting premiums, and receiving various notifications.

